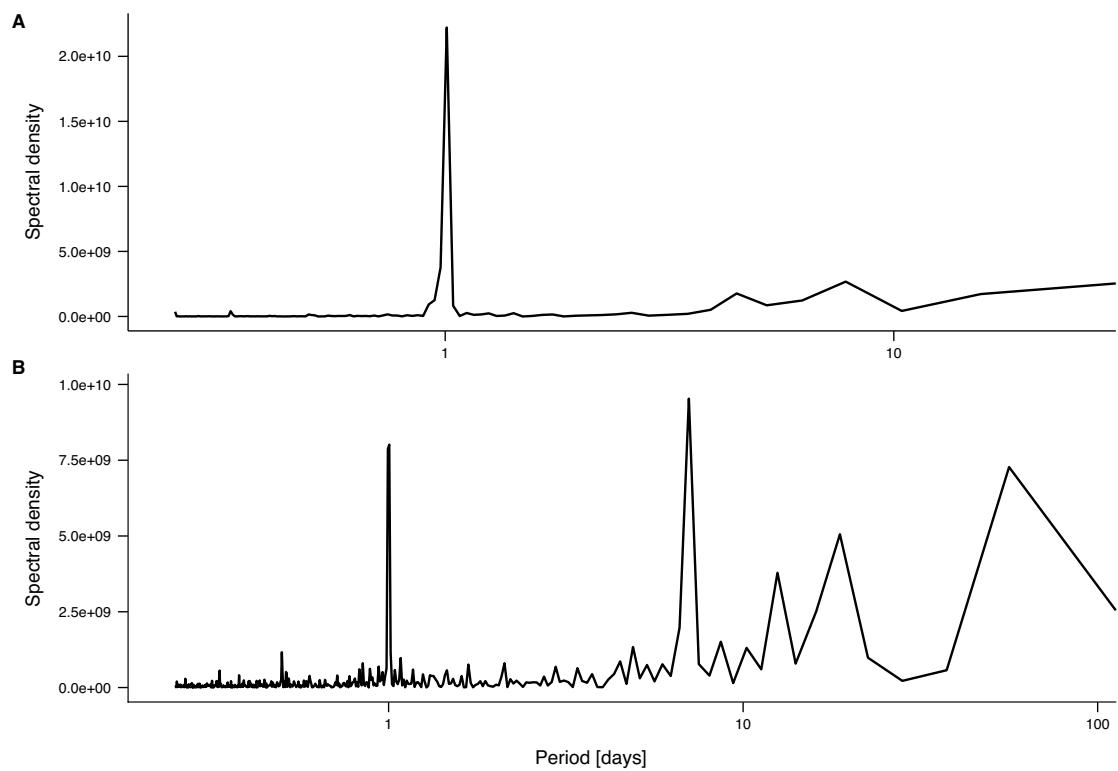


Electronic supplementary material



ESM Fig. S1 Periodogram Power Spectral Density (PSD) estimate of the sum of detections from all receivers in **a** Malathu and **b** Shib Habil. PSD was computed using a Fast Fourier Transform. In both cases it's possible to identify diel cycle. The periodogram in Shib Habil suggests a potential high variability in periods of about a week and 3 months