

THE OFFICIAL MAGAZINE OF THE OCEANOGRAPHY SOCIETY

# Oceanography

## **COPYRIGHT & USAGE**

© Author(s) 2019. This is an open access article made available under the terms of the Creative Commons Attribution 4.0 International License (<https://creativecommons.org/licenses/by/4.0/>), which permits use, sharing, adaptation, distribution, and reproduction in any medium or format as long as users cite the materials appropriately, provide a link to the Creative Commons license, and indicate the changes that were made to the original content. Images, animations, videos, or other third-party material used in articles are included in the Creative Commons license unless indicated otherwise in a credit line to the material. If the material is not included in the article's Creative Commons license, users will need to obtain permission directly from the license holder to reproduce the material.

# Rapid Climate-Driven Circulation Changes Threaten Conservation of Endangered North Atlantic Right Whales

By Nicholas R. Record, Jeffrey A. Runge, Daniel E. Pendleton, William M. Balch, Kimberley T.A. Davies, Andrew J. Pershing, Catherine L. Johnson, Karen Stamieszkin, Rubao Ji, Zhixuan Feng, Scott D. Kraus, Robert D. Kenney, Christy A. Hudak, Charles A. Mayo, Changsheng Chen, Joseph E. Salisbury, and Cameron R.S. Thompson

Photo of a right whale fluke, Bay of Fundy. Photo credit: Jessica Taylor, Anderson Cabot Center for Ocean Life, New England Aquarium



“Recent changes in the Gulf of Maine provide an opportunity to test our assumptions about how species respond to rapid warming.”

**ABSTRACT.** As climate trends accelerate, ecosystems will be pushed rapidly into new states, reducing the potential efficacy of conservation strategies based on historical patterns. In the Gulf of Maine, climate-driven changes have restructured the ecosystem rapidly over the past decade. Changes in the Atlantic meridional overturning circulation have altered deepwater dynamics, driving warming rates twice as high as the fastest surface rates. This has had implications for the copepod *Calanus finmarchicus*, a critical food supply for the endangered North Atlantic right whale (*Eubalaena glacialis*). The oceanographic changes have driven a deviation in the seasonal foraging patterns of *E. glacialis* upon which conservation strategies depend, making the whales more vulnerable to ship strikes and gear entanglements. The effects of rapid climate-driven changes on a species at risk undermine current management approaches.

There is a well-documented global pattern of species shifting their ranges in the direction of changing climate conditions (Perry et al., 2005; Cheung et al., 2009; Chen et al., 2011; Pinsky et al., 2013). Long-lived mobile species, like marine mammals, should be able to track their bioclimate envelopes and other changing conditions, shifting their ranges in response. Because climate change is affecting ecosystems with increasing immediacy, we need to know whether our current understanding of range shifts yields effective conservation and management strategies.

Since 2004, the Gulf of Maine has been one of the fastest warming ocean ecosystems on the planet, as measured by sea surface temperature (Pershing et al., 2015). The rapid rate of warming has been punctuated by sudden ecosystem changes with economic consequences, primarily to fisheries, where sudden temperature changes are not well accounted for in management (Mills et al., 2013; Pershing et al., 2015, 2018; Neckles et al., 2015). Recent changes in the Gulf of Maine provide an opportunity to test our assumptions about

how species respond to rapid warming.

A striking change has occurred within the endangered North Atlantic right whale population (*Eubalaena glacialis*, pop. ~450; Pace et al., 2017). *E. glacialis* is not listed among mammals negatively impacted by climate change (Pacifi et al., 2017) and, under the range-shift paradigm, this highly mobile species should be able to follow favorable conditions. Successful management of the species has relied on its historically regular seasonal migrations, moving from specific foraging grounds in the western Gulf of Maine in winter and spring to the eastern Gulf of Maine and Scotian Shelf in the summer and autumn. These movements track the abundance of this species' main prey, late stages of the lipid-rich copepod *Calanus finmarchicus* (Murison et al., 1989; Mayo and Marx, 1990; Beardsley et al., 1996; Pendleton et al., 2009, 2012). Right whales began to deviate from their typical foraging migration pattern between 2008 and 2010. Their health has since declined (Rolland et al., 2016), and recovery has stalled (Kraus et al., 2016; Davis et al., 2017; Pace et al.,

2017). In 2017, at least 17 whales died, and no calves were born in 2018, raising new alarm that *E. glacialis* may be extinct within 30 years (Stokstad 2017; Meyer-Gutbrod and Greene, 2018). The predominant hypothesis is that a warming-driven northward shift of *C. finmarchicus* has driven whales into regions where protections to minimize ship strikes or fishing-gear entanglements do not yet exist (Daoust et al., 2017; Stokstad, 2017; Pettis et al., 2018; Meyer-Gutbrod et al., 2018). However, the western Gulf of Maine has meanwhile had record-high abundance measurements of *C. finmarchicus* since 2010 (Runge et al., 2015), apparently contradicting this hypothesis.

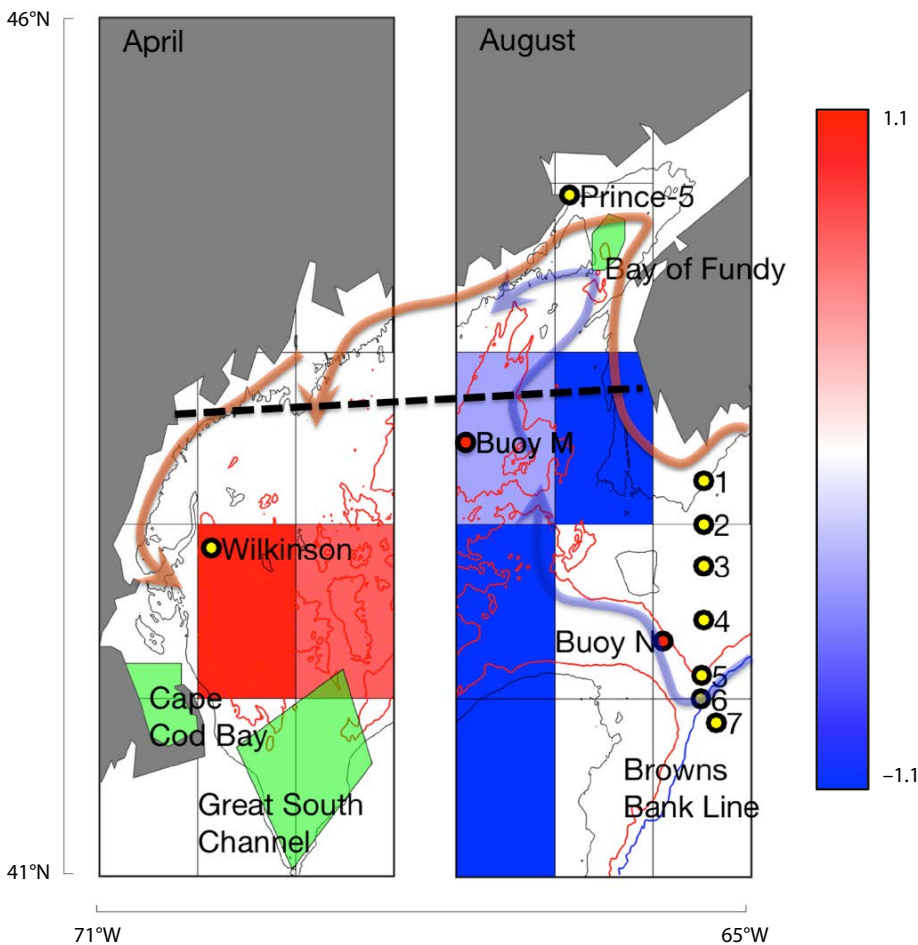
We tested the hypothesis that *E. glacialis* changes relate to recent rapid changes in climate and prey. Most analyses of rapid ocean warming have focused on sea surface temperature because of the broad coverage of satellite measurements (Pershing et al., 2015; Di Lorenzo and Mantua, 2016; Thomas et al., 2017). However, a large amount of excess heat energy is found in subsurface waters (Jewett and Romanou, 2017), and much of the climate-driven warming in the Gulf of Maine is predicted to occur at depth (Saba et al., 2016). The *C. finmarchicus* life cycle depends on seasonal deepwater temperatures because of its annual dormancy period, which occurs from late summer through winter at depths below 100 m in the Gulf of Maine. To test our hypothesis, we aggregated data from oceanographic buoys, transects, and multiple zooplankton and whale surveys from around the Gulf of Maine

(Figure 1 and Supplementary Figure S1), focusing on the period of rapid warming (2004–present) both at the surface and at depth. Based on the shift in the right whale population occurring around 2010 (Kraus et al., 2016), we subdivided data into early (2004–2008) and late (2012–2016) periods and compared time-series data between these two periods using a Mann-Whitney rank sum comparison test (Gibbons et al., 2011). Focusing on areas where spatial and temporal overlap would suggest the possibility of a causal effect between variables, we also tested correlations between inter-

annual time series across data sets. These two complementary approaches pulled out both stepwise and more continuous shifts over the recent warming time period and highlighted probable oceanographic linkages between variables. We oriented much of our interpretation around an oceanographic transport pathway determined by back-tracking currents from the Bay of Fundy feeding grounds (Figure S2). Specific details for processing of each data set and for computing the oceanography are described in the Materials and Methods in the online supplementary materials.

Seasonal patterns of *E. glacialis* and *C. finmarchicus* have shifted significantly from the early period (2004–2008) to the late period (2012–2016). The most notable shift for *E. glacialis* was a sharp decline in sightings per unit effort (SPUE) in the Bay of Fundy critical habitat (Figure 2a,b). In the western Gulf of Maine habitats, there was a decline in the Great South Channel and an increase in Cape Cod Bay, consistent with recent analyses (Ganley et al., 2019). Increases of *C. finmarchicus* were largely restricted to the western Gulf of Maine and occurred in spring, while the late summer through winter decreases in *C. finmarchicus* occurred throughout the Gulf, corresponding to the period of dormancy at depth (Figures 1 and S1). There was a significant decrease in late-stage abundance in late summer, autumn, and winter (Figure 2c–f). At the Wilkinson Basin station, there was a significant increase in the spring abundance of juvenile stages (Figure 2e,f). In Cape Cod Bay, there was a notable increase in copepod abundance in early winter (Figure 2g,h).

We ran pairwise interannual correlations across time series during the 2004–2016 period. The strongest relationships aligned along an oceanographic transport pathway stretching from the Northeast Channel through the deep waters of Jordan Basin and into Grand Manan Basin (Figures 1 and S2), particularly in late summer through autumn and winter. Extreme deepwater warming that began in 2004 exhibited strong sub-annual and subsurface components. The fastest warming rates occurred at depth in the late summer, autumn, and winter months (Figure 3a). Warming was fastest at depths of 20–150 m, from August to February, reaching as high as 0.5°C per year, twice the extreme warming rates of 0.23°C per year reported by Pershing et al. (2015) for surface waters. The rapid warming in these deep waters and in surface waters correlated strongly with the Gulf Stream Index (Figure 3b–e). The spatial structure of this correlation changed seasonally, being strongest at the surface in spring and shifting toward

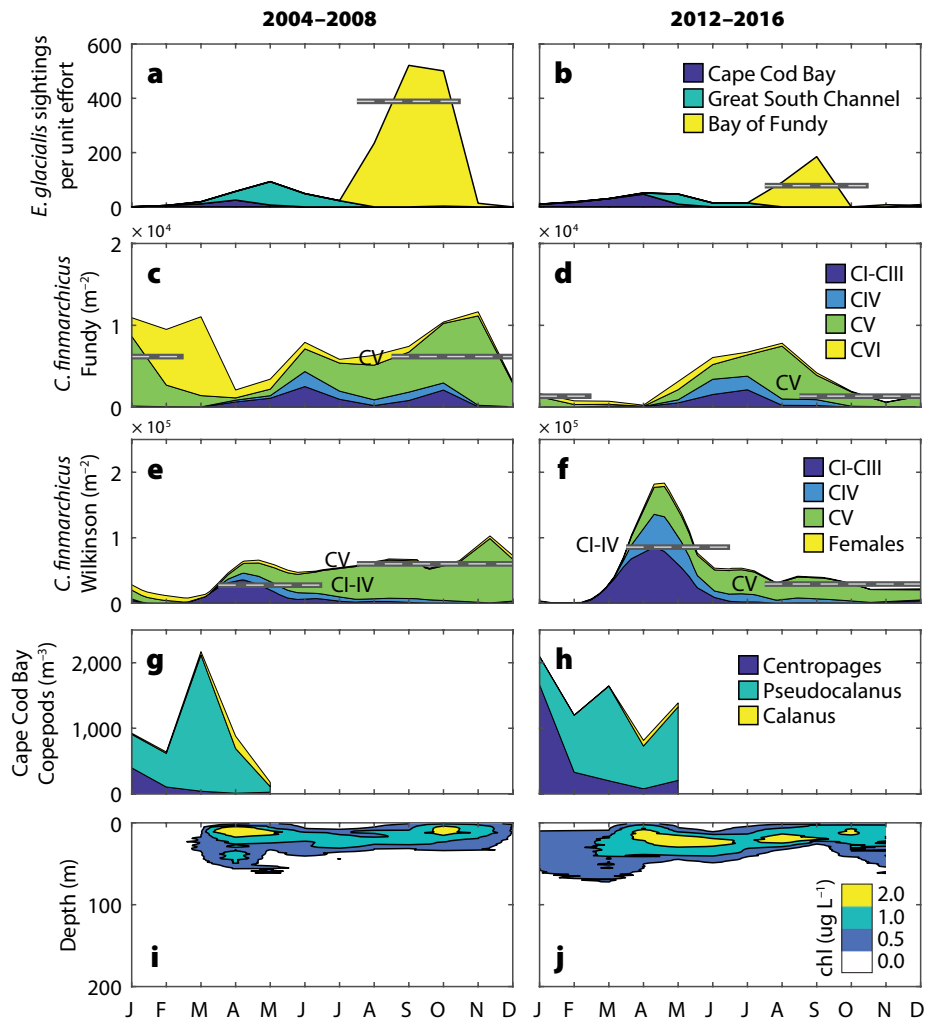


**FIGURE 1.** Gulf of Maine sampling. Yellow dots show time-series stations (Wilkinson Basin, Prince-5, and Browns Bank Line). Grid shows statistically significant (Mann-Whitney rank sum,  $p < 0.05$ ) increases (red) and decreases (blue) in late-stage *C. finmarchicus* log abundance from the NOAA Northeast Fisheries Science Center Ecosystem Monitoring (ECOMON) survey, based on the difference between the two time periods 2004–2008 and 2012–2016. The map is divided because increases are evident primarily in spring in the western gulf (left) and decreases primarily in late summer-autumn in the eastern gulf (right). The heavy dashed black line shows the Gulf of Maine North Atlantic Time Series (GNATS) transect. The red dot indicates the location of oceanographic buoy N. Arrows trace the sources of advection into Gulf of Maine surface (orange) and deep (blue) layers. The light green regions are areas historically identified as right whale feeding habitats. More detailed information can be found in Figures S1–S3 in the online supplementary materials.

depths below 100 m in summer and winter. The most recent high-resolution ocean models project above-average warming to occur in the Northwest Atlantic, particularly in the deep waters of the Gulf of Maine (Saba et al., 2016). A key oceanographic node in this warming process is the Northeast Channel, where warmer, deeper slope water can enter the Gulf of Maine. This location has been identified as a key indicator of changes in the Atlantic meridional overturning circulation (AMOC; Sherwood et al., 2011; Rahmstorf et al., 2015), which has slowed more rapidly than expected (Caesar et al., 2018). The strong correlations between the Gulf Stream Index and the deepwater temperatures in Jordan Basin over the past decade reflect a strong localized effect of this process in the deep Gulf of Maine.

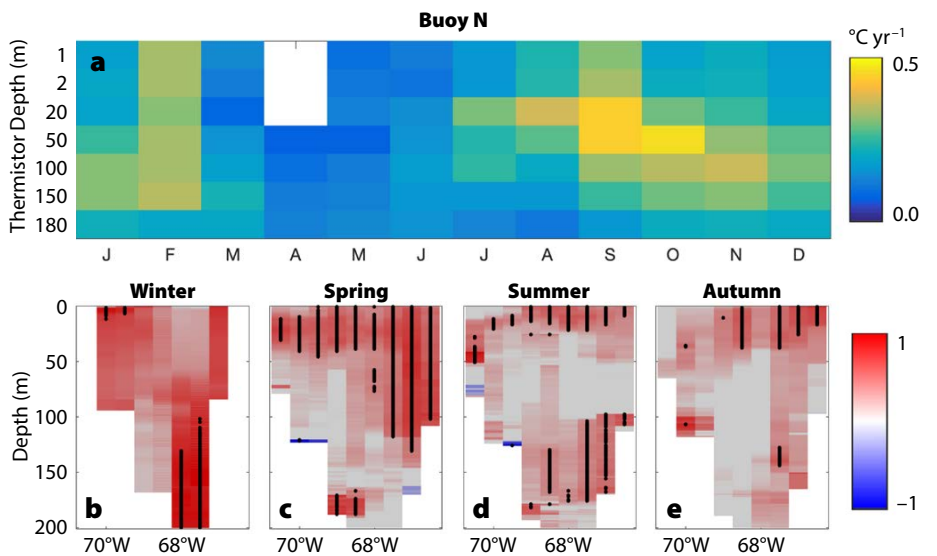
*C. finmarchicus* spends much of the year in dormancy at depths below 100 m. Season-specific deepwater temperature (150 m) correlated negatively ( $p < 0.05$ ) with late-stage *C. finmarchicus* abundance during summer ( $r^2 = 0.67$ ), autumn ( $r^2 = 0.40$ ), and winter ( $r^2 = 0.90$ ), but not spring (Figure 4). Lagged correlations between the Browns Bank Line stations and inner Gulf of Maine *C. finmarchicus* measurements showed that only Station 6 correlated significantly with Jordan Basin ( $r^2 = 0.67$ , Figure 3). Other Browns Bank Line stations showed weak to no correlations with the inner Gulf of Maine stations (Figure S3). Because of the location of Station 6 adjacent to the Northeast Channel, this pattern is consistent with the pattern of deepwater inflow (Figures 1 and S2).

The rapid decline in *E. glacialis* habitat use in the Bay of Fundy correlated significantly with late-stage *C. finmarchicus*



**FIGURE 2.** Climatological differences between the early (2004–2008) and late (2012–2016) periods in (a,b) *E. glacialis* sightings per unit effort, (c,d) *C. finmarchicus* abundance at the Prince-5 station and the (e,f) Wilkinson Basin station, and (g,h) copepod abundances in Cape Cod Bay. CI–CVI indicates the copepod life stage. Plots are stacked. Horizontal lines highlight multi-month significant differences ( $p < 0.05$ ) between the early and late periods for c–f. (i,j) Chlorophyll concentrations from Wilkinson Basin for the two periods.

**FIGURE 3.** (a) Rate of temperature change for 2004–2017 at buoy N in the Northeast Channel by depth and month. (b–e) Correlation between water temperature from the GNATS transect (see Figure 1) averaged into seasons and the Gulf Stream Index over the period 1998–2015. Dots indicate statistical significance ( $p < 0.05$ ).

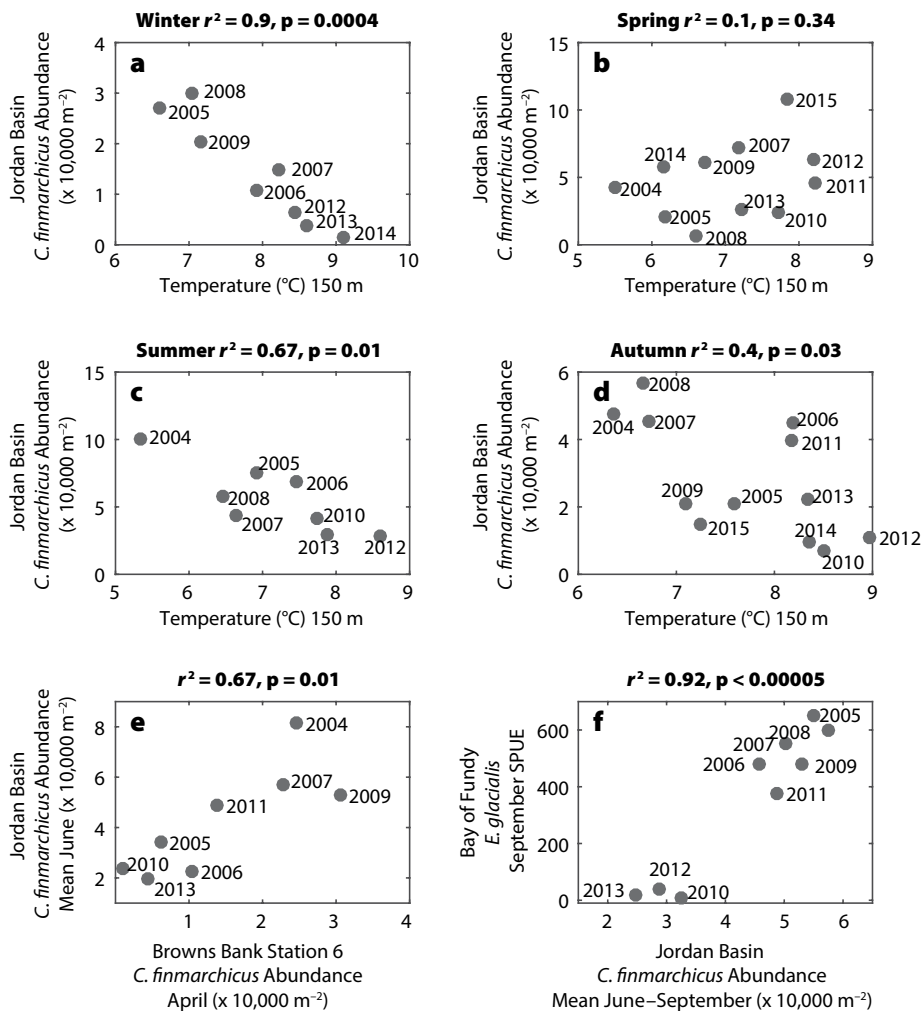


abundance in the eastern Gulf of Maine during the same late-summer period. There was a strong positive correlation ( $r^2 = 0.92$ ) between Jordan Basin late-stage *C. finmarchicus* abundances and September *E. glacialis* SPUE in the Bay of Fundy (Figure 4f). There also appeared to be a distinct break at *C. finmarchicus* abundances of around  $40,000 \text{ m}^{-2}$ , below which *E. glacialis* sightings were very low. Mayo and Marx (1990) and Murison and Gaskin (1989) estimated the immediate decision-making threshold for *E. glacialis* feeding to be approximately  $1,000 \text{ m}^{-3}$  for Cape Cod Bay and the Bay of Fundy, respectively. Kenney et al. (1986) estimated the minimum concentrations necessary for right whale feed-

ing to provide a net energetic benefit over the long term to be in the  $10^5$ – $10^6 \text{ m}^{-3}$  range. The  $40,000 \text{ m}^{-2}$  threshold in our data suggests a similar break, representing the regional copepod abundance at which high-density, exploitable, small-scale patches within a region are likely to occur. In the western Gulf of Maine, links between changes in copepod abundance and *E. glacialis* habitat use were ambiguous. The data from Cape Cod Bay, spanning January to May, did not correlate significantly with right whale SPUE in any month for any of the three dominant copepod taxa (*C. finmarchicus*, *Pseudocalanus*, and *Centropages*; Table S1). This likely has to do with the fact that *E. glacialis* is exploiting multiple spe-

cies, each with different phenologies and energetic contents.

These lines of evidence support the concept that there are presently two largely distinct oceanographic pathways controlling *C. finmarchicus* and *E. glacialis* in the Gulf of Maine. The two pathways manifest at different times of year and at different depths, are sensitive to different driving forces, and influence *E. glacialis* foraging differently. The first pathway influences the western Gulf of Maine, which has been the location of some of the highest abundances measured for *C. finmarchicus* within its range (Melle et al., 2014). These high abundances are a consequence of the “coastal amplification of supply and transport (CAST)” process, described by Ji et al. (2017), in which individuals are carried along the highly productive Maine Coastal Current, taking advantage of the high productivity of the coastal environment (Figure 1, orange arrow). This pathway typically results in very high *C. finmarchicus* abundances in the western Gulf of Maine in spring and is more sensitive to winter phytoplankton stock available to reproducing females (Figure 2i,j) than to temperature because of the strong link between food availability and egg production rates (Durbin et al., 2003). In contrast to predictions of northward range shifts, this pathway has maintained favorable conditions in the spring for both *C. finmarchicus* (Ji et al., 2017) and *E. glacialis* in the western Gulf of Maine, where *E. glacialis* also feed on smaller copepods in the winter and spring (Pendleton et al., 2009), further buffering potential changes in *C. finmarchicus*. While the CAST pathway as described is internal to the Gulf of Maine (Ji et al., 2017), the upstream extension along the Nova Scotia Current has been cited as a key input of *C. finmarchicus* into the Gulf of Maine (Greene et al., 2004). Presumably, some level of external supply is necessary to sustain this *C. finmarchicus* population, and a reduction in supply would hypothetically affect this source. However, the lack of correlation between the nearshore Browns



**FIGURE 4.** (a–d) Jordan Basin temperature versus Jordan Basin late-stage *C. finmarchicus*, within each of the four seasons. (e) Copepodite *C. finmarchicus* at Browns Bank Line Station 6 in April versus late-stage *C. finmarchicus* in Jordan Basin in June. (f) Jordan Basin late-summer abundance of late-stage *C. finmarchicus* versus Bay of Fundy *E. glacialis* sightings per unit effort.

Bank Line stations and the interior Gulf of Maine *C. finmarchicus* abundances (Figure S3) suggests that supply along this part of the advective route is less important than has been reported in past years. The high winter phytoplankton productivity and high reproductive potential of *C. finmarchicus* (i.e., the coastal amplification) reduces the sensitivity to changes in supply along this route.

The second pathway, in contrast, is more sensitive to climate-driven changes in oceanography. Slope water along the Scotian Shelf represents another potential source of *C. finmarchicus* to the shelf and to downstream locations (Head et al., 1999; Zakardjian et al., 2003). In the eastern Gulf of Maine, dormant *C. finmarchicus* populations are exposed to oceanographic changes occurring at greater depths during late summer through winter. Warming has been most rapid in deep water during these seasons, likely reflecting changes in flow through the Northeast Channel (Figure 3). The decline in *C. finmarchicus* is likely a combination of reduced supply and a more direct effect of deepwater temperatures. The lagged link with Browns Bank Line Station 6 (Figures 4e and S3) is consistent with *C. finmarchicus* supply from warm slope-water sources (Figures 1 and S2). While the temperatures are not high enough to cause mortality directly, *C. finmarchicus* mortality is typically calculated as an increasing function of temperature (Speirs et al., 2006) to capture the combined effects of predation, increased metabolic demands, and decreased diapause duration. The fact that the temperature effect is strongest in winter (Figure 4a) suggests a cumulative direct effect of temperature throughout the dormancy period. Whether through direct advection of *C. finmarchicus* or through the effect of warmer advected water, the decline is consistent with a change in flow through the Northeast Channel associated with changes in the AMOC. This driver has been documented in reconstructed past data (Sherwood et al., 2011), is well described in models (Saba et al.,

2016), and has resulted in rapid deep-water warming. This depth and seasonality match the time of year when lipid-rich *C. finmarchicus* are in diapause in the Gulf of Maine in deep water, and also when *E. glacialis* typically feeds in the eastern Gulf of Maine. The documented change in the AMOC (Caesar et al., 2018) is the likely driver of these changes, and


because of the link between the AMOC and climate change, this is a probable precursor to future changes.

Adapting to rapid change will require approaches that anticipate change. In the case of *E. glacialis*, measures to reduce risk—such as designation of critical habitat areas, vessel routing modifications, and fishing closures—are built upon the notion that whales will visit the same foraging grounds at the same times each year (Vanderlaan et al., 2011). A disruption to this regularity, as a consequence of rapid oceanographic changes, has exposed whales to increased risks as they have ranged beyond their regulatory protections, prompting new survey effort and risk-reduction measures in Canadian waters (Davies and Brilliant, 2019). One approach to making management more dynamic is forecasting at subannual timescales. For example, using a dynamic species distribution model informed by *C. finmarchicus* distributions, Pendleton et al. (2012) predicted highly favorable *E. glacialis* foraging habitat south of Nantucket, which was outside of the known foraging areas. This region was subsequently found to be a foraging

hotspot (Leiter et al., 2017), demonstrating the potential value of oceanographic forecasts as early warning systems and as adaptation tools in a more rapidly changing environment.

Climate change is often viewed as a long-term problem, and in this context, mean species range shifts could be a useful tool. However, mean shifts assume

“An understanding of subannual ecosystem and oceanographic dynamics, and of the response of systems to rapid change, will be necessary to support conservation in the future.”

that organisms can adjust quickly to new conditions in the ocean. While the shift in right whale distributions is consistent with this assumption, low calf production is an indication that they are not yet able to forage well in these new habitats (Corkeron et al., 2018). Recent modeling work suggests that a healthy whale population can rebound after a few low-reproduction years by finding and adapting to a new habitat (Tulloch et al., 2019). The right whale population is not healthy, and more time spent foraging may lead to additional mortality, amplifying the challenges this species faces. Rapid warming at the level observed in the Gulf of Maine is likely to be a more prominent feature of the future ocean. Even climate-based projections, which predict gradual northward range shifts, fall short at finer timescales. An understanding of subannual ecosystem and oceanographic dynamics, and of the response of systems to rapid change, will be necessary to support conservation in the future. 

#### SUPPLEMENTARY MATERIALS

Materials and Methods, Figures S1–S3, Table S1, and References are available online at <https://doi.org/10.5670/oceanog.2019.201>.

## REFERENCES

- Beardsley, R.C., A.W. Epstein, C.S. Chen, K.F. Wishner, M.C. Macaulay, and R.D. Kenney. 1996. Spatial variability in zooplankton abundance near feeding right whales in the Great South Channel. *Deep-Sea Research Part II* 43(7–8):1,601–1,625, [https://doi.org/10.1016/S0967-0645\(96\)00050-1](https://doi.org/10.1016/S0967-0645(96)00050-1).
- Caesar, L., S. Rahmstorf, A. Robinson, G. Feulner, and V. Saba. 2018. Observed fingerprint of a weakening Atlantic Ocean overturning circulation. *Nature* 556(7700):191–196, <https://doi.org/10.1038/s41586-018-0006-5>.
- Chen, I.C., J.K. Hill, R. Ohlemüller, D.B. Roy, and C.D. Thomas. 2011. Rapid range shifts of species associated with high levels of climate warming. *Science* 333(6045):1,024–1,026, <https://doi.org/10.1126/science.1206432>.
- Cheung, W.W., V.W. Lam, J.L. Sarmiento, K. Kearney, R. Watson, and D. Pauly. 2009. Projecting global marine biodiversity impacts under climate change scenarios. *Fish and Fisheries* 10(3):235–251, <https://doi.org/10.1111/j.1467-2979.2008.00315.x>.
- Corkeron, P., P. Hamilton, J. Bannister, P. Best, C. Charlton, K.R. Groch, K. Findlay, V. Rowntree, E. Vermeulen, and R.M. Pace III. 2018. The recovery of North Atlantic right whales, *Eubalaena glacialis*, has been constrained by human-caused mortality. *Royal Society Open Science* 5(11):180892, <https://doi.org/10.1098/rsos.180892>.
- Daoust, P.-Y., E.L. Couture, T. Wimmer, and L. Bourque. 2017. *Incident Report: North Atlantic Right Whale Mortality Event in the Gulf of St. Lawrence, 2017*. Collaborative Report produced by Canadian Wildlife Health Cooperative, Marine Animal Response Society, Fisheries and Oceans Canada, 224 pp.
- Davies, K.T., and S.W. Brillant. 2019. Mass human-caused mortality spurs federal action to protect endangered North Atlantic right whales in Canada. *Marine Policy* 104:157–162, <https://doi.org/10.1016/j.marpol.2019.02.019>.
- Davis, G.E., M.F. Baumgartner, J.M. Bonnell, J. Bell, C. Berchok, J.B. Thornton, S. Brault, G. Buchanan, R.A. Charif, D. Cholewiak, and C.W. Clark. 2017. Long-term passive acoustic recordings track the changing distribution of North Atlantic right whales (*Eubalaena glacialis*) from 2004 to 2014. *Scientific Reports* 7(1):13460, <https://doi.org/10.1038/s41598-017-13359-3>.
- Di Lorenzo, E., and N. Mantua. 2016. Multi-year persistence of the 2014/15 North Pacific marine heat wave. *Nature Climate Change* 6(11):1,042–1,047, <https://doi.org/10.1038/nclimate3082>.
- Durbin, E.G., R.G. Campbell, M.C. Casas, M.D. Ohman, B. Niehoff, J. Runge, and M. Wagner. 2003. Interannual variation in phytoplankton blooms and zooplankton productivity and abundance in the Gulf of Maine during winter. *Marine Ecology Progress Series* 254:81–100, <https://doi.org/10.3354/meps254081>.
- Ganley, L.C., S. Brault, and C.A. Mayo. 2019. What we see is not what there is: Estimating North Atlantic right whale *Eubalaena glacialis* local abundance. *Endangered Species Research* 38:101–113, <https://doi.org/10.3354/esr00938>.
- Gibbons, J.D., and S. Chakraborti. 2011. *Nonparametric Statistical Inference*, 5th ed. Chapman & Hall/CRC Press, Taylor & Francis Group, Boca Raton, FL, 650 pp.
- Greene, C.H., A.J. Pershing, B.C. Monger, M.C. Benfield, E.G. Durbin, and M.C. Casas. 2004. Supply-side ecology and the response of zooplankton to climate-driven changes in the North Atlantic Ocean. *Oceanography* 17(3):60–71, <https://doi.org/10.5670/oceanog.2004.31>.
- Head, E.J.H., L.R. Harris, and B. Petrie. 1999. Distribution of *Calanus* spp. on and around the Nova Scotia shelf in April: Evidence for an offshore source of *Calanus finmarchicus* to the mid- and western regions. *Canadian Journal of Fisheries and Aquatic Sciences* 56:2,463–2,476, <https://doi.org/10.1139/f99-193>.
- Jewett, L., and A. Romanou. 2017. Ocean acidification and other ocean changes. Pp. 364–392 in *Climate Science Special Report: Fourth National Climate Assessment, Volume I*. D.J. Wuebbles, D.W. Fahey, K.A. Hibbard, D.J. Dokken, B.C. Stewart, and T.K. Maycock, eds, US Global Change Research Program, Washington, DC.
- Ji, R., Z. Feng, B.T. Jones, C. Thompson, C. Chen, N.R. Record, and J.A. Runge. 2017. Coastal amplification of supply and transport (CAST): A new hypothesis about the persistence of *Calanus finmarchicus* in the Gulf of Maine. *ICES Journal of Marine Science* 74(7):1,865–1,874, <https://doi.org/10.1093/icesjms/fsw253>.
- Kenney, R.D., M.A.M. Hyman, R.E. Owen, G.P. Scott, and H.E. Winn. 1986. Estimation of prey densities required by western North Atlantic right whales. *Marine Mammal Science* 2:1–13, <https://doi.org/10.1111/j.1748-7692.1986.tb00024.x>.
- Kraus, S.D., R.D. Kenney, C.A. Mayo, W.A. McLellan, M.J. Moore, and D.P. Nowacek. 2016. Recent scientific publications cast doubt on North Atlantic right whale future. *Frontiers in Marine Science* 3:137, <https://doi.org/10.3389/fmars.2016.00137>.
- Leiter, S.M., K.M. Stone, J.L. Thompson, C.M. Accardo, B.C. Wikgren, M.A. Zani, T.V.N. Cole, R.D. Kenney, C.A. Mayo, and S.D. Kraus. 2017. North Atlantic right whale *Eubalaena glacialis* occurrence in offshore wind energy areas near Massachusetts and Rhode Island, USA. *Endangered Species Research* 34:45–59, <https://doi.org/10.3354/esr00827>.
- Mayo, C.A., and M.K. Marx. 1990. Surface foraging behaviour of the North Atlantic right whale, *Eubalaena glacialis*, and associated zooplankton characteristics. *Canadian Journal of Zoology* 68(10):2,214–2,220, <https://doi.org/10.1139/z90-308>.
- Melle, W., J.A. Runge, E. Head, S. Plourde, C. Castellani, P. Licandro, J. Pierson, S. Jonasdottir, C. Johnson, C. Broms, and others. 2014. The North Atlantic Ocean as habitat for *Calanus finmarchicus*: Environmental factors and life history traits. *Progress in Oceanography* 129(B):244–284, <https://doi.org/10.1016/j.pocean.2014.04.026>.
- Meyer-Gutbrod, E.L., and C.H. Greene. 2018. Uncertain recovery of the North Atlantic right whale in a changing ocean. *Global Change Biology* 24:455–464, <https://doi.org/10.1111/gcb.13929>.
- Meyer-Gutbrod, E.L., C.H. Greene, and K.T.A. Davies. 2018. Marine species range shifts necessitate advanced policy planning: The case of the North Atlantic right whale. *Oceanography* 31(2):19–23, <https://doi.org/10.5670/oceanog.2018.209>.
- Mills, K.E., A.J. Pershing, C.J. Brown, Y. Chen, F.S. Chiang, D.S. Holland, S. Lehuta, J.A. Nye, J.C. Sun, A.C. Thomas, and R.A. Wahle. 2013. Fisheries management in a changing climate: Lessons from the 2012 ocean heat wave in the Northwest Atlantic. *Oceanography* 26(2):191–195, <https://doi.org/10.5670/oceanog.2013.27>.
- Murison, L.D., and D.E. Gaskin. 1989. The distribution of right whales and zooplankton in the Bay of Fundy, Canada. *Canadian Journal of Zoology* 67(6):1,411–1,420, <https://doi.org/10.1139/z89-200>.
- Neckles, H.A. 2015. Loss of eelgrass in Casco Bay, Maine, linked to green crab disturbance. *Northeastern Naturalist* 22(3):478–500, <https://doi.org/10.1656/045.022.0305>.
- Pace, R.M. III, P.J. Corkeron, and S.D. Kraus. 2017. State-space mark-recapture estimates reveal a recent decline in abundance of North Atlantic right whales. *Ecology and Evolution* 7(21):8,730–8,741, <https://doi.org/10.1002/ece3.3406>.
- Pacifici, M., P. Visconti, S.H. Butchart, J.E. Watson, F.M. Cassola, and C. Rondinini. 2017. Species' traits influenced their response to recent climate change. *Nature Climate Change* 7(3):205, <https://doi.org/10.1038/nclimate3223>.
- Pendleton, D.E., A.J. Pershing, M.W. Brown, C.A. Mayo, R.D. Kenney, N.R. Record, and T.V.N. Cole. 2009. Regional-scale mean copepod concentration indicates relative abundance of North Atlantic right whales. *Marine Ecology Progress Series* 378:211–225, <https://doi.org/10.3354/meps07832>.
- Pendleton, D.E., P.J. Sullivan, M.W. Brown, T.V. Cole, C.P. Good, C.A. Mayo, B.C. Monger, S. Phillips, N.R. Record, and A.J. Pershing. 2012. Weekly predictions of North Atlantic right whale *Eubalaena glacialis* habitat reveal influence of prey abundance and seasonality of habitat preferences. *Endangered Species Research* 18(2):147–161, <https://doi.org/10.3354/esr00433>.
- Perry, A.L., P.J. Low, J.R. Ellis, and J.D. Reynolds. 2005. Climate change and distribution shifts in marine fishes. *Science* 308(5730):1,912–1,915, <https://doi.org/10.1126/science.1111322>.
- Pershing, A.J., M.A. Alexander, C.M. Hernandez, L.A. Kerr, A. Le Bris, K.E. Mills, J.A. Nye, N.R. Record, H.A. Scannell, J.D. Scott, and G.D. Sherwood. 2015. Slow adaptation in the face of rapid warming leads to collapse of the Gulf of Maine cod fishery. *Science* 350(6262):809–812, <https://doi.org/10.1126/science.aac9819>.
- Pershing, A.J., K.E. Mills, A.M. Dayton, B.S. Franklin, and B.T. Kennedy. 2018. Evidence for adaptation from the 2016 marine heatwave in the Northwest Atlantic Ocean. *Oceanography* 31(2):152–161, <https://doi.org/10.5670/oceanog.2018.213>.
- Pettis, H., and P. Hamilton. 2016. North Atlantic Right Whale Consortium 2016 annual report card. North Atlantic Right Whale Consortium, Boston, MA, <https://www.narwc.org/report-cards.html>.
- Pettis, H.M., R.M. Pace III, and P.K. Hamilton. 2018. North Atlantic Right Whale Consortium 2018 annual report card. North Atlantic Right Whale Consortium, Boston, MA, <https://www.narwc.org/report-cards.html>.
- Pinsky, M.L., B. Worm, M.J. Fogarty, J.L. Sarmiento, and S.A. Levin. 2013. Marine taxa track local climate velocities. *Science* 341(6151):1,239–1,242, <https://doi.org/10.1126/science.1239352>.
- Rahmstorf, S., J.E. Box, G. Feulner, M.E. Mann, A. Robinson, S. Rutherford, and E.J. Schaffernicht. 2015. Exceptional twentieth-century slowdown in Atlantic Ocean overturning circulation. *Nature Climate Change* 5(5):475, <https://doi.org/10.1038/nclimate2554>.
- Rolland, R.M., R.S. Schick, H.M. Pettis, A.R. Knowlton, P.K. Hamilton, J.S. Clark, and S.D. Kraus. 2016. Health of North Atlantic right whales, *Eubalaena glacialis*, over three decades: From individual health to demographic and population health trends. *Marine Ecology Progress Series* 542:265–282, <https://doi.org/10.3354/meps11547>.
- Runge, J.A., R. Ji, C.R.S. Thompson, N.R. Record, C. Chen, D.C. Vandemark, J.E. Salisbury, and F. Maps. 2015. Persistence of *Calanus finmarchicus* in the western Gulf of Maine during recent extreme warming. *Journal of Plankton Research* 37(1):221–232, <https://doi.org/10.1093/plankt/fbu098>.
- Saba, V.S., S.M. Griffies, W.G. Anderson, M. Winton, M.A. Alexander, T.L. Delworth, J.A. Hare, M.J. Harrison, A. Rosati, G.A. Vecchi, and



- R. Zhang. 2016. Enhanced warming of the Northwest Atlantic Ocean under climate change. *Journal of Geophysical Research* 121(1):118–132, <https://doi.org/10.1002/2015JC011346>.
- Sherwood, O.A., M.F. Lehmann, C.J. Schubert, D.B. Scott, and M.D. McCarthy. 2011. Nutrient regime shift in the western North Atlantic indicated by compound-specific  $\delta^{15}\text{N}$  of deep-sea gorgonian corals. *Proceedings of the National Academy of Sciences of the United States of America* 108(3):1,011–1,015, <https://doi.org/10.1073/pnas.1004904108>.
- Speirs, D.C., W.S. Gurney, M.R. Heath, W. Horbelt, S.N. Wood, and B.A. DeCuevas. 2006. Ocean-scale modelling of the distribution, abundance, and seasonal dynamics of the copepod *Calanus finmarchicus*. *Marine Ecology Progress Series* 313:173–192, <https://doi.org/10.3354/meps313173>.
- Stokstad, E. 2017. Surge in right whale deaths raises alarms. *Science* 357(6353):740–741, <https://doi.org/10.1126/science.357.6353.740>.
- Thomas, A.C., A.J. Pershing, K.D. Friedland, J.A. Nye, K.E. Mills, M.A. Alexander, N.R. Record, R. Weatherbee, and M.E. Henderson. 2017. Seasonal trends and phenology shifts in sea surface temperature on the North American north-eastern continental shelf. *Elementa: Science of the Anthropocene* 5:48, <http://doi.org/10.1525/elementa.240>.
- Tulloch, V.J., É.E. Plagányi, C. Brown, A.J. Richardson, and R. Matear. 2019. Future recovery of baleen whales is imperiled by climate change. *Global Change Biology* 25:1,263–1,281, <https://doi.org/10.1111/gcb.14573>.
- Vanderlaan, A.S.M., R.K. Smedbol, and C.T. Taggart. 2011. Fishing-gear threat to right whales (*Eubalaena glacialis*) in Canadian waters and the risk of lethal entanglement. *Canadian Journal of Fisheries and Aquatic Sciences* 68(12):2,174–2,193, <https://doi.org/10.1139/f2011-124>.
- Zakardjian, B.A., J. Sheng, J.A. Runge, I. McLaren, S. Plourde, K.R. Thompson, and Y. Gratton. 2003. Effects of temperature and circulation on the population dynamics of *Calanus finmarchicus* in the Gulf of St. Lawrence and Scotian Shelf: Study with a coupled, three-dimensional hydrodynamic, stage-based life history model. *Journal of Geophysical Research* 108(C11), <https://doi.org/10.1029/2002JC001410>.

## ACKNOWLEDGMENTS

This study utilized data collected by NOAA's Northeast Fisheries Science Center as part of an ongoing mission to monitor and assess the Northeast Continental Shelf ecosystem. This study utilized the Gulf Stream Index computed by Lequan Chi. Contents are the responsibility of the authors and do not represent the views of the NE Climate Adaptation Science Center or the US Geological Survey. This manuscript is submitted for publication with the understanding that the United States Government is authorized to reproduce and distribute reprints for governmental purposes. The authors acknowledge the North Atlantic Right Whale Consortium for right whale sighting and effort data.

## FUNDING

NASA NNX14AM77G and NNX17AI77G (NRR, WMB), NASA NNX16AG59G (NRR, KS), NSF OCE 1459096, 1459087 (NRR, JAR, CRST, CC), NSF OCE 1459133 (RJ, ZF), OCE-1655686 (RJ, ZF), USGS G16AC00237 (DEP), Maine Department of Marine Resources (JR, CRST), Marine Environmental Observation Prediction and Response Network of Centres of Excellence (KTAD), NOAA National Marine Fisheries Service; Massachusetts Environmental Trust; Division of Marine Fisheries, Commonwealth of Massachusetts (CH, CAM), Northeastern Regional Association of Coastal Ocean Observing Systems (CC).

## AUTHOR CONTRIBUTIONS

Conceptualization, methodology, and analysis (NRR, JAR, DEP, AJP, WMB, KTAD, CLJ, KS, RJ, ZF, RDK); data collection and curation (JAR, DEP, WMB, CLJ, KS, RDK, CRST, CH, CAM, JS, CC); writing (NRR); writing review and editing (all).

## DATA AND MATERIALS AVAILABILITY

Data used in this study are available through public databases referenced in the online supplementary materials.

## AUTHORS

**Nicholas R. Record** (nrecord@bigelow.org) is Senior Research Scientist, Bigelow Laboratory for Ocean Sciences, East Boothbay, ME, USA. **Jeffrey A. Runge** is Professor, University of Maine, Orono, ME, USA, and Gulf of Maine Research Institute, Portland, ME, USA. **Daniel E. Pendleton** is Research Scientist, Anderson Cabot Center for Ocean Life, New England Aquarium, Boston, MA, USA. **William M. Balch** is Senior Research Scientist, Bigelow Laboratory for Ocean Sciences, East Boothbay, ME, USA. **Kimberley T.A. Davies** is Assistant Professor, University of New Brunswick, St. John, NB, Canada. **Andrew J. Pershing** is Chief Scientific Officer, Gulf of Maine Research Institute, Portland, ME, USA. **Catherine L. Johnson** is Research Scientist, Fisheries and Oceans Canada, Bedford Institute of Oceanography, Dartmouth, NS, Canada. **Karen Stamieszkin** is Research Scientist, Bigelow Laboratory for Ocean Sciences, East Boothbay, ME, USA. **Rubao Ji** is Senior Scientist, and **Zhixuan Feng** is Postdoctoral Investigator, both at Woods Hole Oceanographic Institution, Woods Hole, MA, USA. **Scott D. Kraus** is Vice President and Senior Science Advisor, Anderson Cabot Center for Ocean Life, New England Aquarium, Boston, MA, USA. **Robert D. Kenney** is Emeritus Marine Research Scientist, University of Rhode Island Graduate School of Oceanography, Narragansett, RI, USA. **Christy A. Hudak** is Associate Scientist, and **Charles A. Mayo** is Director, Right Whale Ecology Program, Center for Coastal Studies, Provincetown, MA, USA. **Changsheng Chen** is Professor, University of Massachusetts, Dartmouth, MA, USA. **Joseph E. Salisbury** is Associate Research Professor, University of New Hampshire, Durham, NH, USA. **Cameron R.S. Thompson** is PhD Candidate, Institute of Marine Research, Bergen, Norway.

## ARTICLE CITATION

Record, N.R., J.A. Runge, D.E. Pendleton, W.M. Balch, K.T.A. Davies, A.J. Pershing, C.L. Johnson, K. Stamieszkin, R. Ji, Z. Feng, S.D. Kraus, R.D. Kenney, C.A. Hudak, C.A. Mayo, C. Chen, J.E. Salisbury, and C.R.S. Thompson. 2019. Rapid climate-driven circulation changes threaten conservation of endangered North Atlantic right whales. *Oceanography* 32(2):162–169, <https://doi.org/10.5670/oceanog.2019.201>.

## COPYRIGHT & USAGE

© Author(s) 2019. This is an open access article made available under the terms of the Creative Commons Attribution 4.0 International License (<https://creativecommons.org/licenses/by/4.0/>).