

# Supporting Information for ”Water-rich bending faults at the Middle America Trench”

Samer Naif,<sup>1</sup> Kerry Key,<sup>1</sup> Steven Constable,<sup>1</sup> and Rob L. Evans,<sup>2</sup>

## Contents of this file

1. Figures S1 to S3

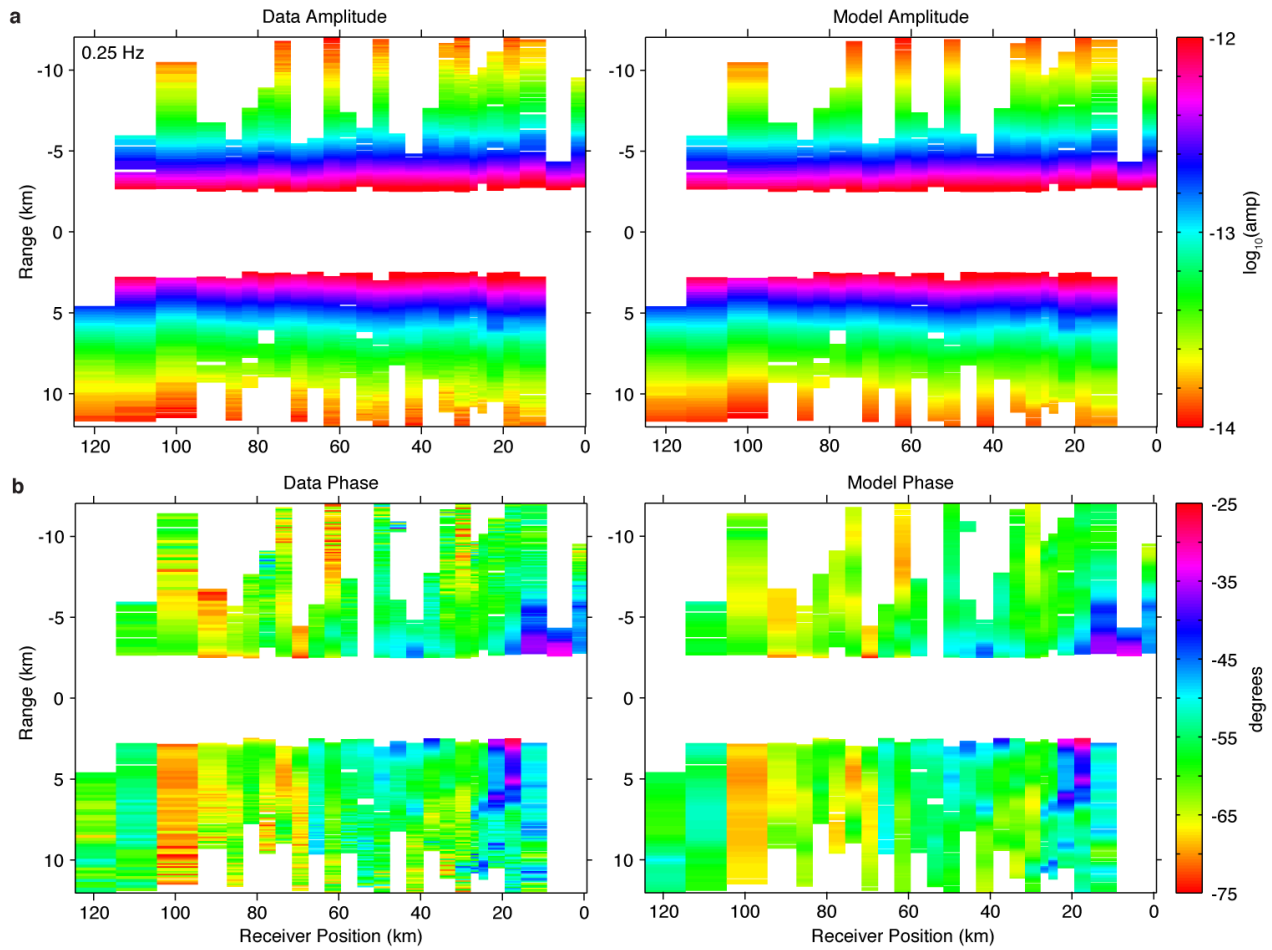
## Introduction

This supporting information contains three figures that show the responses of the data and the final converged inversion model for each of the three frequencies.

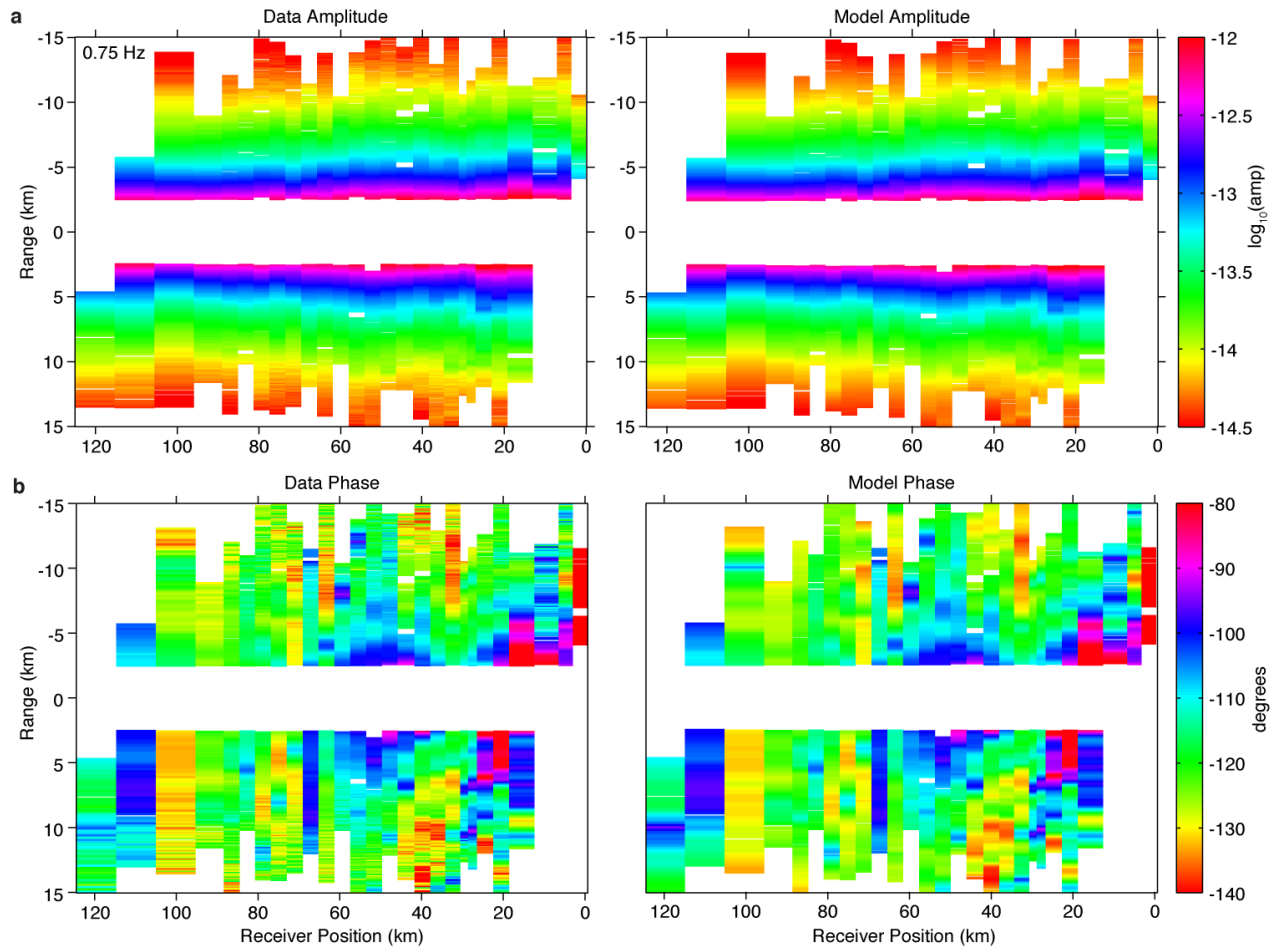
---

<sup>1</sup>Institute of Geophysics and Planetary  
Physics, Scripps Institution of  
Oceanography, University of California San  
Diego, La Jolla, California, USA.

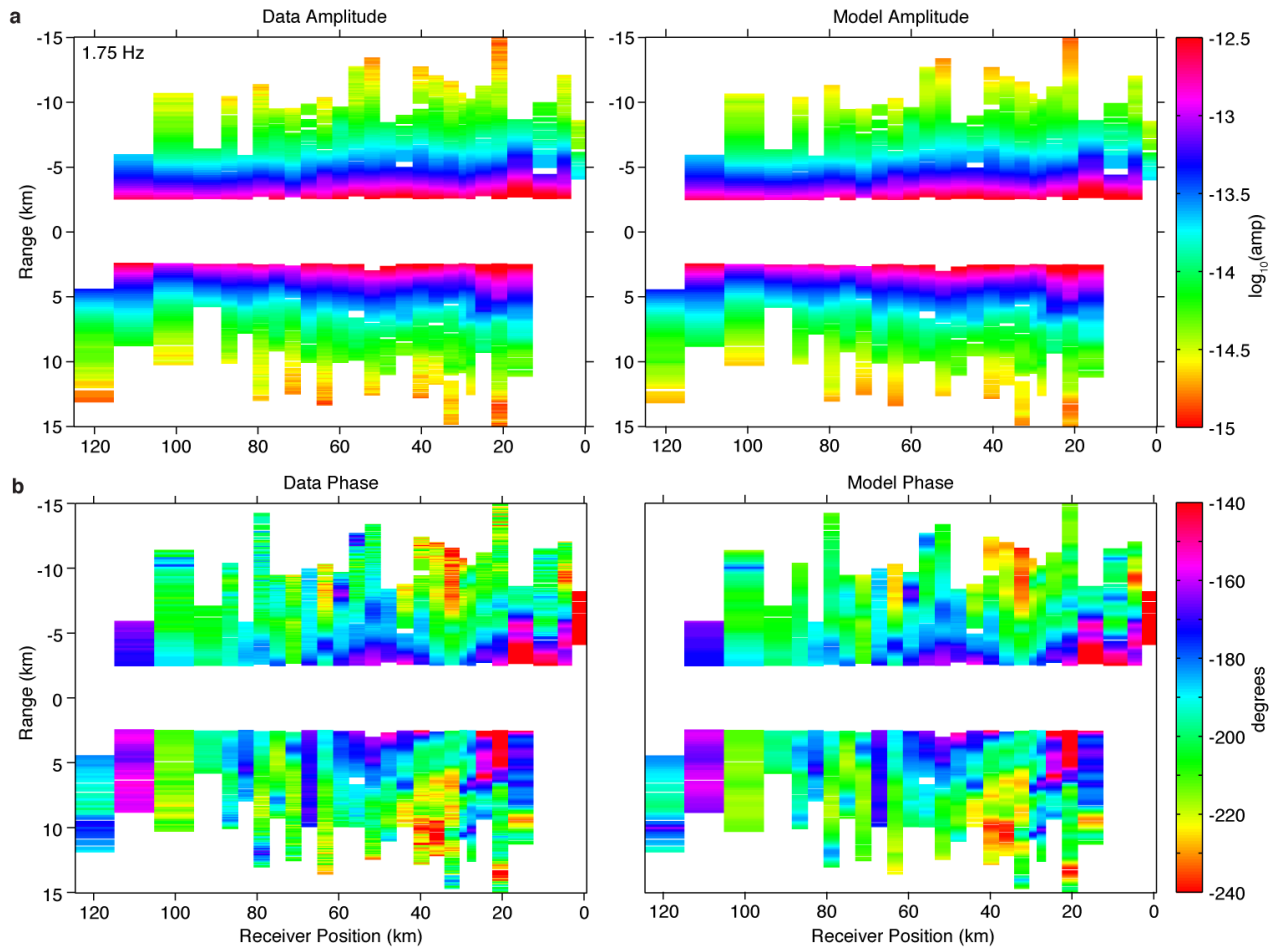
<sup>2</sup>Department of Geology and Geophysics,  
Woods Hole Oceanographic Institution,  
Woods Hole, Massachusetts, USA.



**Figure S1.** Data and model fits at 0.25 Hz. Data and model responses of **a**, amplitude and **b**, phase.



**Figure S2.** Data and model fits at 0.75 Hz. Data and model responses of **a**, amplitude and **b**, phase.



**Figure S3.** Data and model fits at 1.75 Hz. Data and model responses of **a**, amplitude and **b**, phase.