

Supplementary material

Table S1: Earthquakes with probable high teleseismic strain in Yellowstone

<i>Date and time</i> ^a	<i>lon</i>	<i>lat</i>	<i>z</i> ^b	<i>M</i>	<i>r</i> ^c	<i>log(ε)</i> ^d	<i>Region</i>	
13 Jan 2001	17:40:41	-88.729	12.997	82.9	7.7	4079	-3.98	El Salvador
28 Feb 2001	18:56:32	-122.628	47.150	56.0	6.8	961	-3.39	Nisqually, Washington
23 Jun 2001	20:44:18	-73.561	-16.303	2.2	8.4	7739	-3.81	Southern Peru
3 Nov 2002	22:18:29	-147.611	63.629	10.8	7.8	3134	-3.49	Denali, Alaska
22 Jan 2003	02:12:06	-104.082	18.896	27.4	7.5	2910	-3.83	Colima, Mexico
25 Sep 2003	20:01:22	143.873	41.749	33.0	8.3	7893	-3.98	Hokkaido, Japan
17 Nov 2003	06:51:26	178.642	51.103	27.1	7.7	5116	-4.28	Aleutian Islands, Alaska
28 Jun 2004	09:53:54	-134.488	54.824	20.0	6.8	2041	-4.38	Craig, Alaska
26 Dec 2004	01:12:56	95.901	3.413	26.1	9.0	14065	-3.72	North Sumatra, Indonesia
28 Mar 2005	16:23:39	97.113	2.096	30.0	8.6	14144	-4.31	North Sumatra, Indonesia
15 June 2005	02:53:31	-125.585	41.447	18.0	7.2	1244	-3.15	Northern California
15 Nov 2006	11:24:38	153.211	46.681	12.2	8.3	6971	-3.82	Kuril Islands
13 Jan 2007	04:33:40	154.503	46.231	22.5	8.1	6922	-4.10	Kuril Islands
15 Aug 2007	23:51:42	-76.555	-13.384	41.2	8.0	7304	-4.31	Central Peru
12 Sep 2007	11:24:31	101.396	-4.464	35.5	8.5	14570	-4.49	South Sumatra, Indonesia
28 May 2009	08:31:38	-86.243	16.808	29.0	7.3	3839	-4.49	Honduras
3 Aug 2009	18:03:26	-112.914	29.070	7.8	6.9	1720	-4.01	Gulf of California
29 Sep 2009	18:00:28	-171.937	-15.512	18.5	8.1	9079	-4.45	Samoa Islands
27 Feb 2010	06:47:00	-72.933	-36.148	28.1	8.8	9742	-3.53	Maule, Chile
4 Apr 2010	22:43:45	-115.278	32.297	4.0	7.2	1405	-3.31	Sierra El Mayor, Mexico
11 Mar 2011	05:57:56	142.373	38.297	29.0	9.1	8251	-2.87	Tohoku, Japan

^a Date and time of estimated P-wave arrival in Yellowstone

^b Earthquake depth (km)

^c Distance from Yellowstone (km)

^d Log of seismic energy density ($\text{J}\cdot\text{m}^{-3}$)

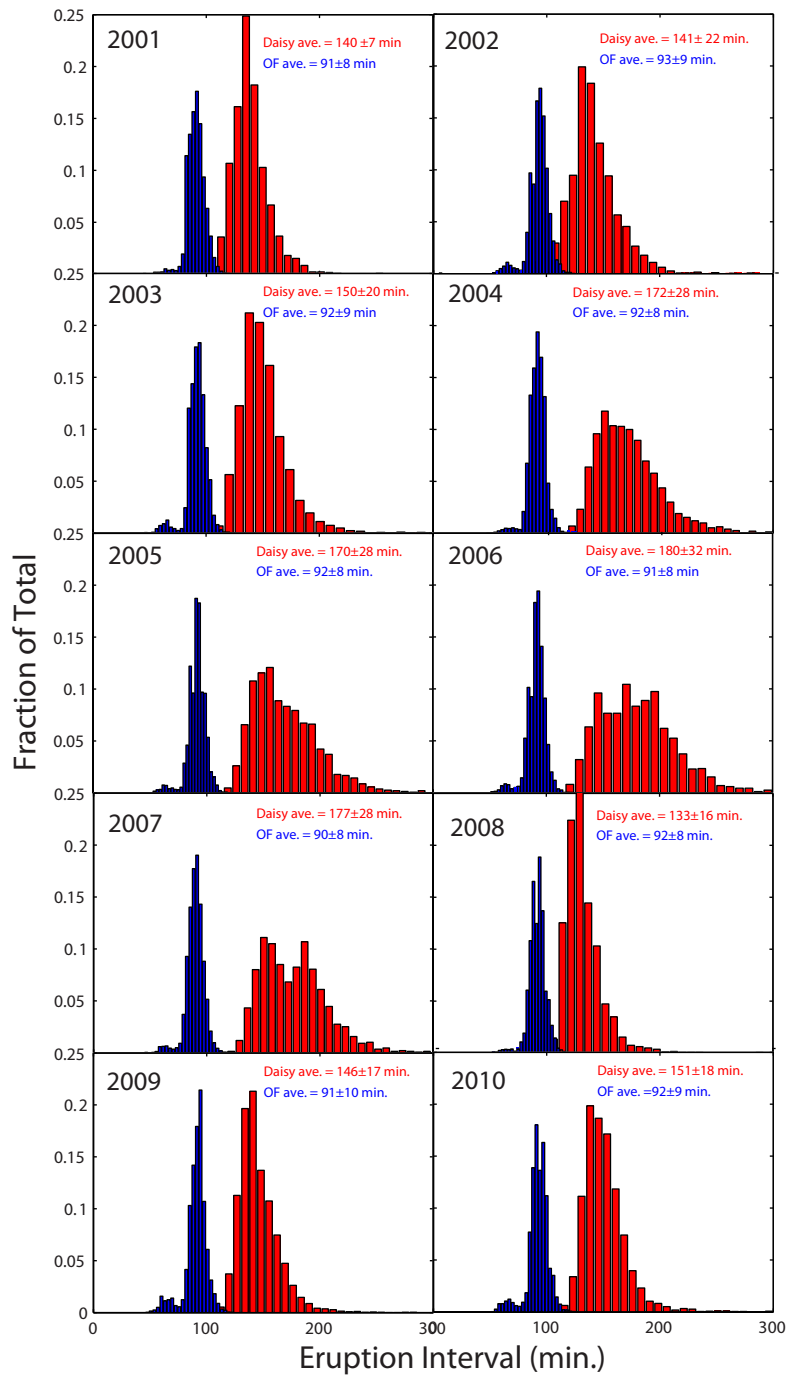


Figure S1: Annual distributions of interval between eruption (IBE) for Old Faithful geyser (blue bars) and Daisy geyser (red bars) between 2001 and 2010.

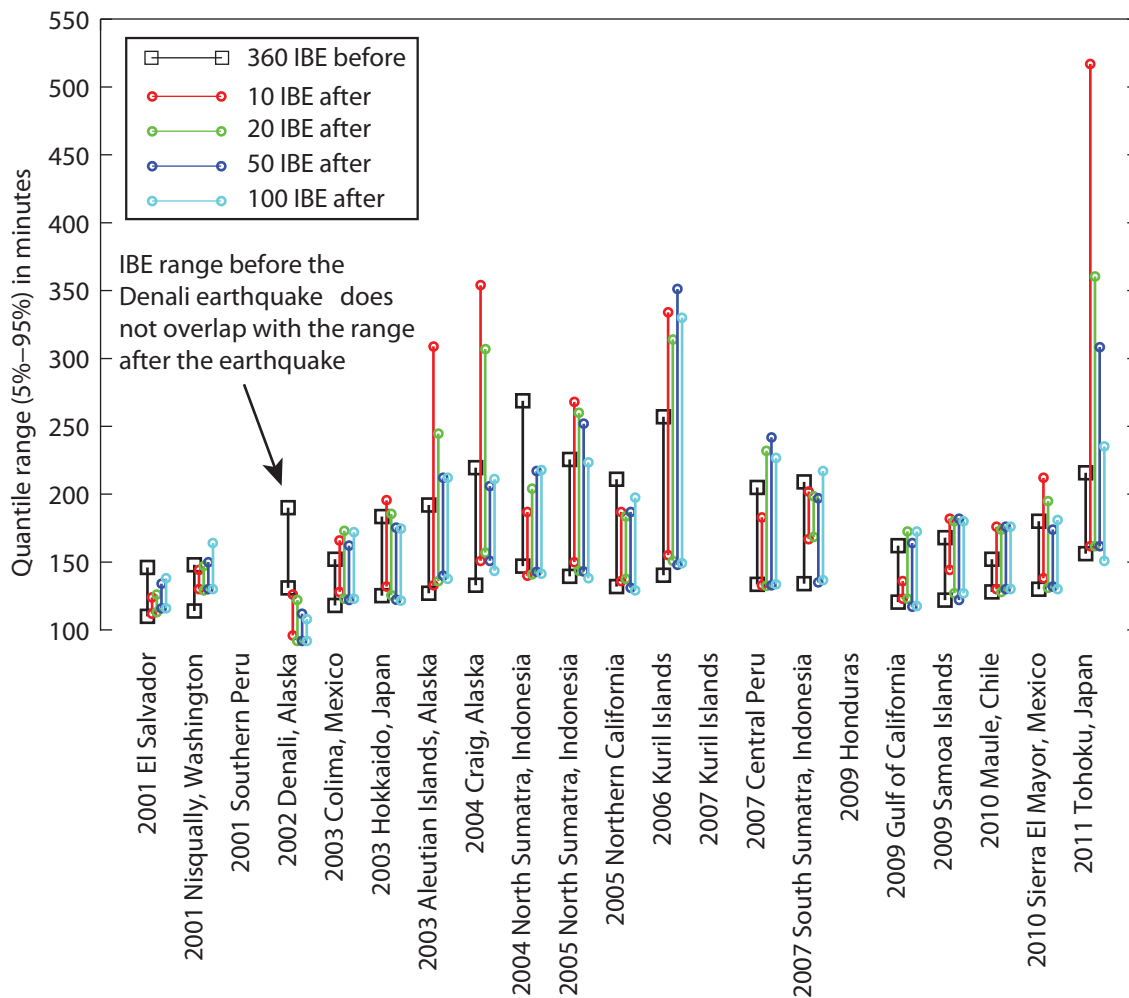


Figure S2 - The 0.05 and 0.95 quantiles of Daisy geyser Intervals between Eruption (IBE) before and after 18 large global earthquakes listed in Table S1 of the Supplementary material. The 2001 Southern Peru, 2007 Kuril Islands, and 2009 Honduras earthquakes occurred during or near a large data gap in the IBE record, such that the test could not be performed. Black lines and squares - 360 IBE before the earthquake, red lines and squares - 10 IBE after the earthquake, green lines and squares - 20 IBE after the earthquake, dark blue lines and squares - 50 IBE after the earthquake, light blue lines and squares - 100 IBE after the earthquake.