

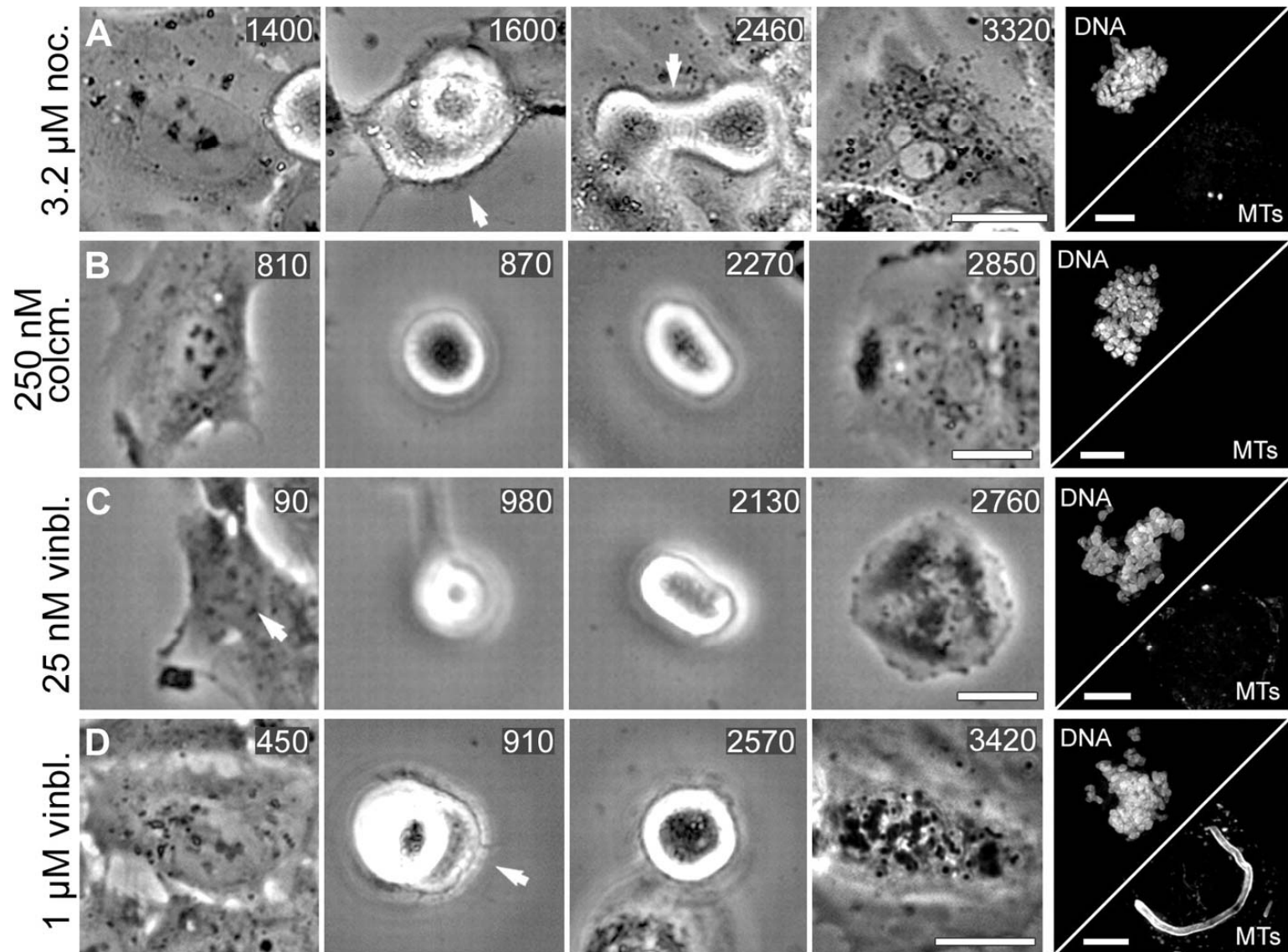
Microtubules do not promote mitotic slippage when the spindle assembly checkpoint cannot be satisfied

Daniela A. Brito, Zhenye Yang, and Conly L. Rieder

J. Cell Biol.
Volume 182(4):623-629
August 2, 2008

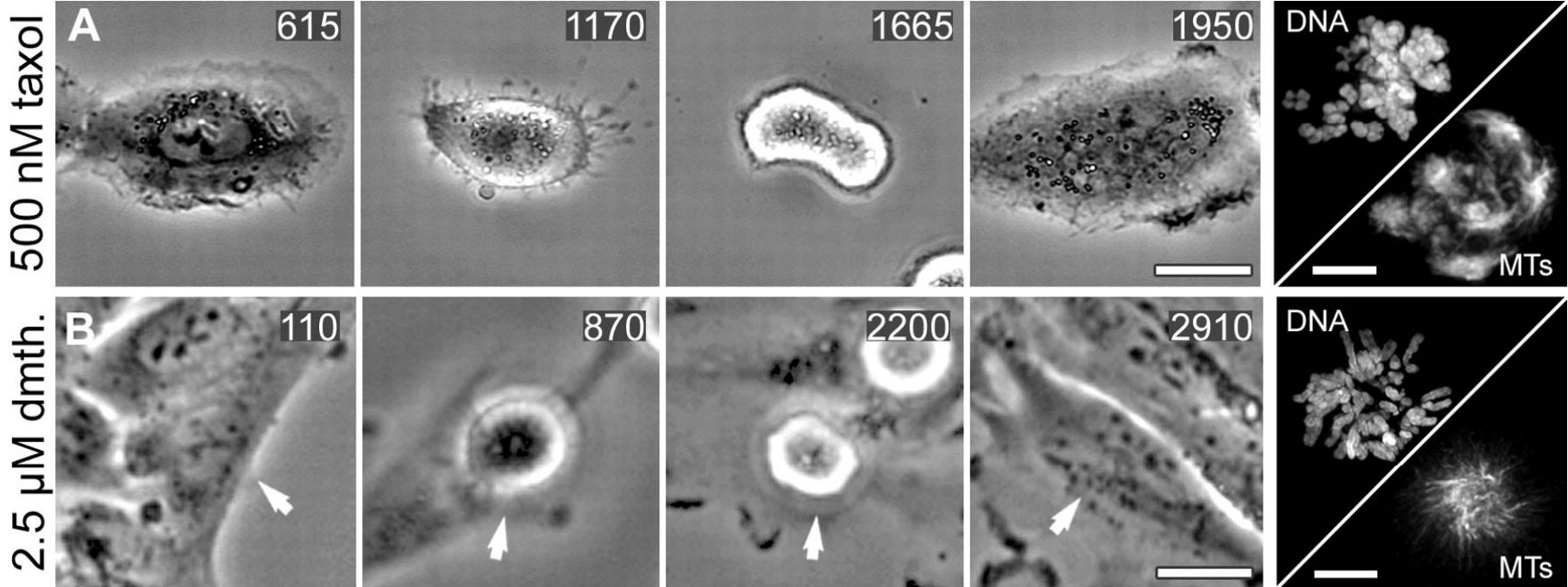
JCB

Figure 1. In the absence of spindle MTs, RPE-1 cells spend 20–30 h in mitosis



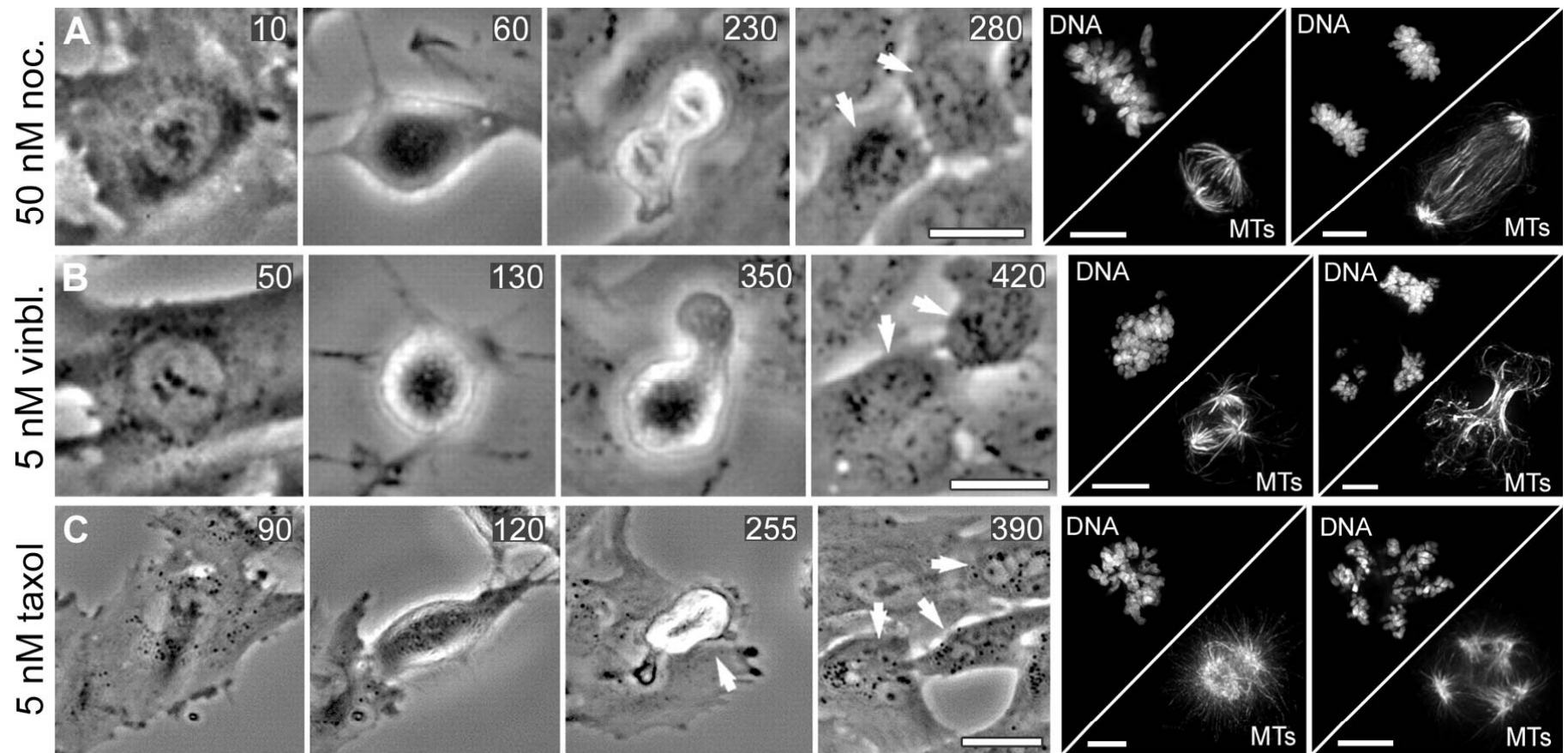
Brito et al. J. Cell Biol. 2008:182:623-629

Figure 2. When RPE-1 cells cannot satisfy the SAC, the formation of spindle MTs does not accelerate mitotic slippage



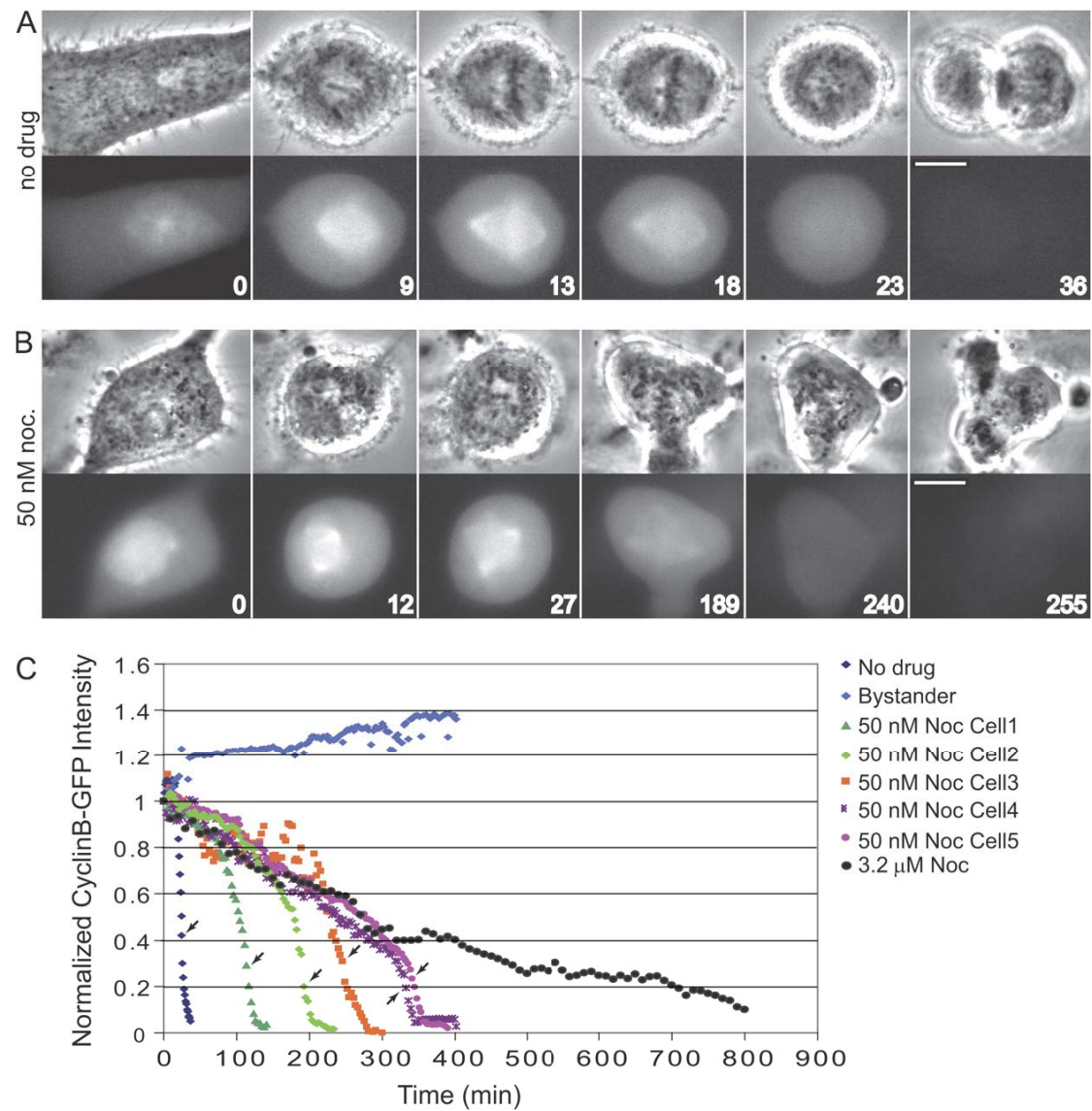
Brito et al. J. Cell Biol. 2008:182:623-629

Figure 3. In low concentrations of MT poisons or stabilizers, RPE-1 cells form aberrant spindles that segregate chromosomes into two or more daughter cells



Brito et al. *J. Cell Biol.* 2008;182:623-629

Figure 4. Exit from mitosis in the presence of low concentrations of spindle MT poisons occurs from SAC satisfaction and not slippage



Brito et al. *J. Cell Biol.* 2008;182:623-629