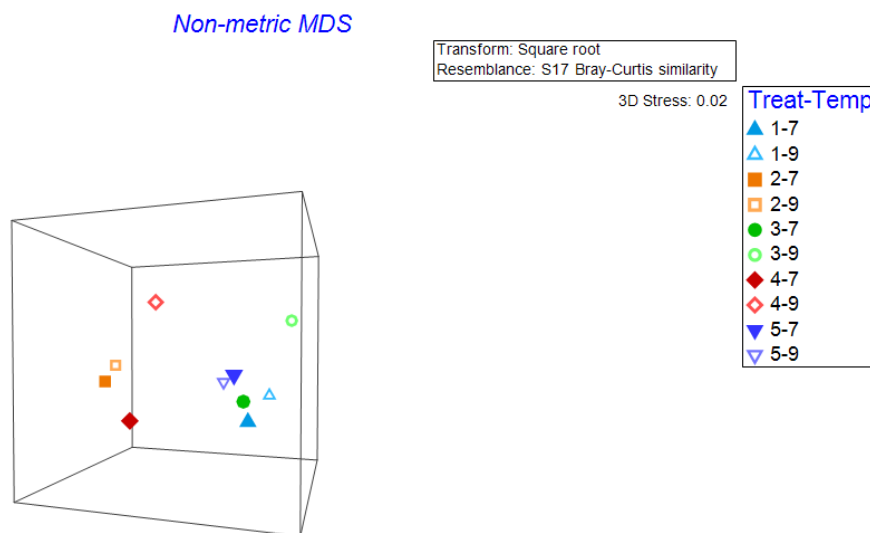


Supplementary Material

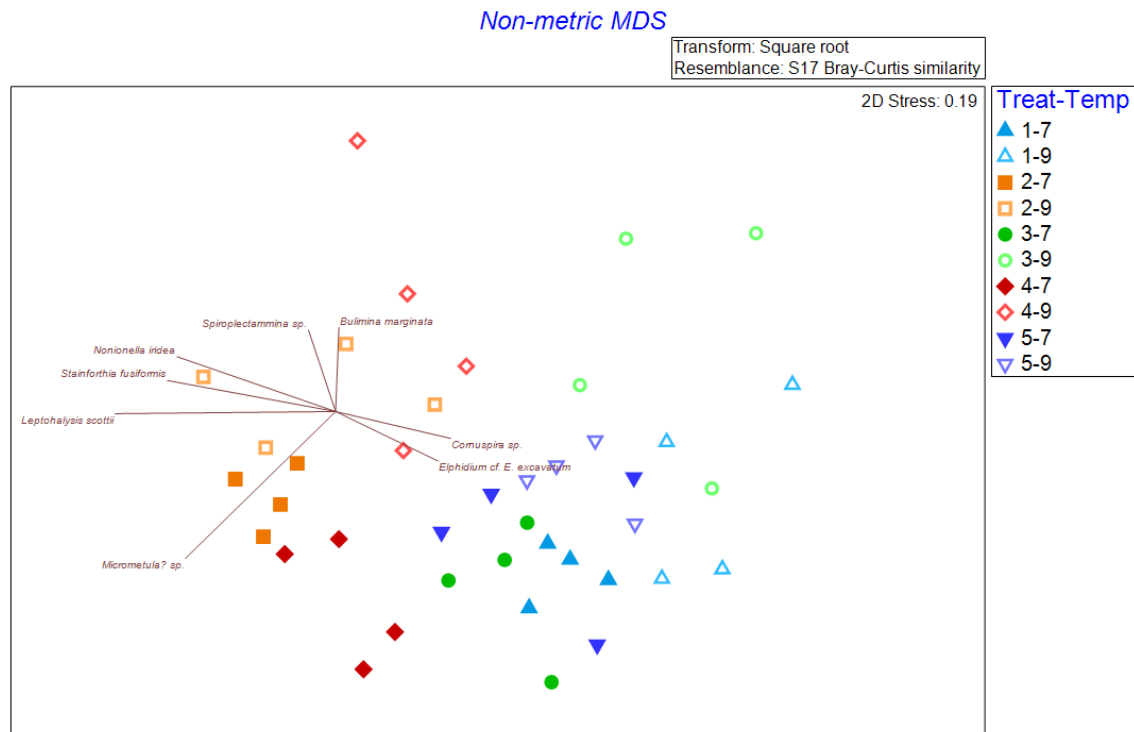
Impacts of multiple stressors on a benthic foraminiferal community: A long-term experiment assessing response to ocean acidification, hypoxia and warming

Joan M. Bernhard^{1*}, Johannes C. Wit¹, Victoria R. Starczak², David J. Beaudoin², William G. Phalen¹, Daniel C. McCorkle¹

1 Supplementary Figures

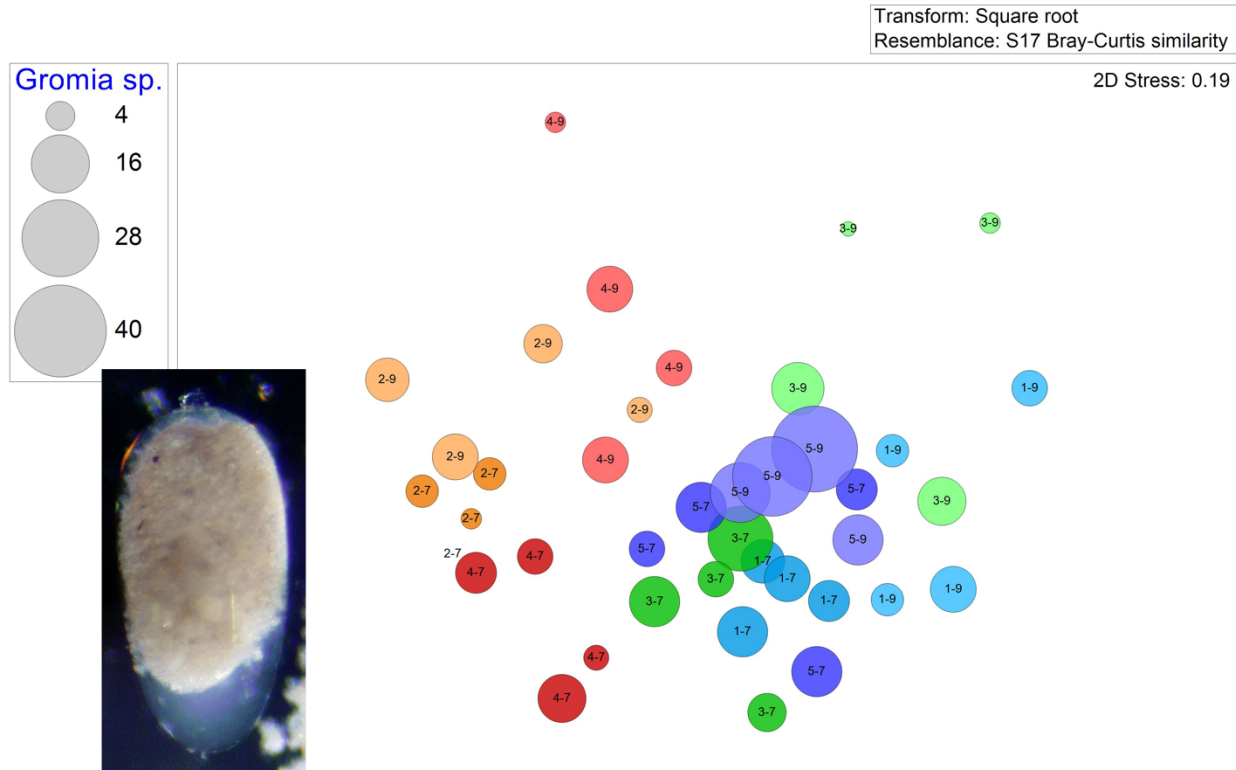


Supplementary Figure 1. Three-dimensional nMDS plot of the 7C Total 9C Live dataset presented as the grand average of all four samples of each sub-treatment. Treatment 1 (blue) is Present Day; Treatment 2 (orange) is Hypoxia; Treatment 3 (green) is OA; Treatment 4 (red) is OA + Hypoxia; Treatment 5 (purple) is Pre-industrial. Filled symbols represent 7°C samples; open symbols represent 9°C samples.



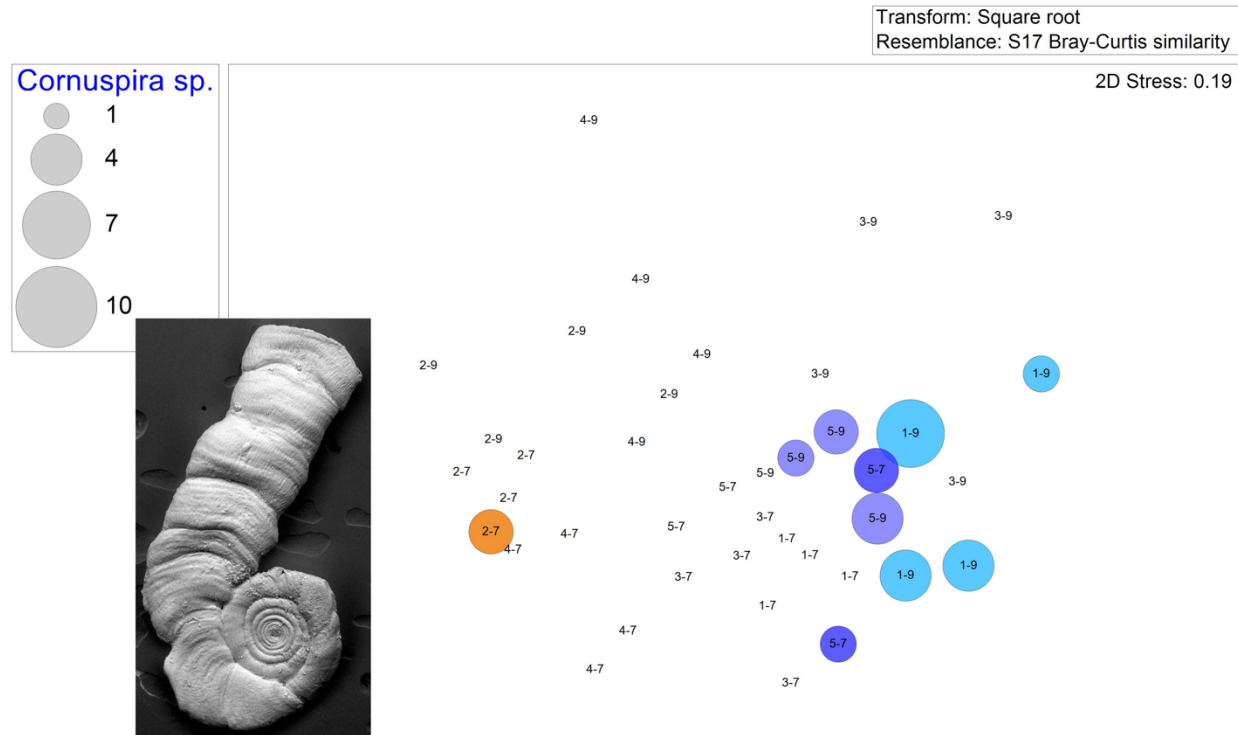
Supplementary Figure 2. Two-dimensional nMDS plot of the 7C Total 9C Live dataset, showing each sample. Plot with overlay of vector plot for 8 species, selected to display a range of observed responses to Treatments. Vector direction reflects Pearson correlations of the square-root-transformed counts with the two axes; length is relative importance of the taxon. Treatment 1 (blue) is Present Day; Treatment 2 (orange) is Hypoxia; Treatment 3 (green) is OA; Treatment 4 (red) is OA + Hypoxia; Treatment 5 (purple) is Pre-industrial. Filled symbols represent 7°C samples; open symbols represent 9°C samples.

Non-metric MDS



Supplementary Figure 3. Bubble plot projecting *Gromia* sp. abundance (7°C Total / 9°C Live) for each sample on 2-D nMDS plot. Bubbles are color coded to treatment; lighter shade represents warmer assemblages. Circle diameter is keyed to abundance. Inset is reflected light micrograph. Treatment 1 (blue) is Present Day; Treatment 2 (orange) is Hypoxia; Treatment 3 (green) is OA; Treatment 4 (red) is OA + Hypoxia; Treatment 5 (purple) is Pre-industrial.

Non-metric MDS



Supplementary Figure 4. Bubble plot projecting *Cornuspira* sp. abundance (7°C Total / 9°C Live) for each sample on 2-D nMDS plot. Bubbles are color coded to treatment; lighter shade represents warmer assemblages. Circle diameter is keyed to abundance. Inset is SEM micrograph. Treatment 1 (blue) is Present Day; Treatment 2 (orange) is Hypoxia; Treatment 3 (green) is OA; Treatment 4 (red) is OA + Hypoxia; Treatment 5 (purple) is Pre-industrial.