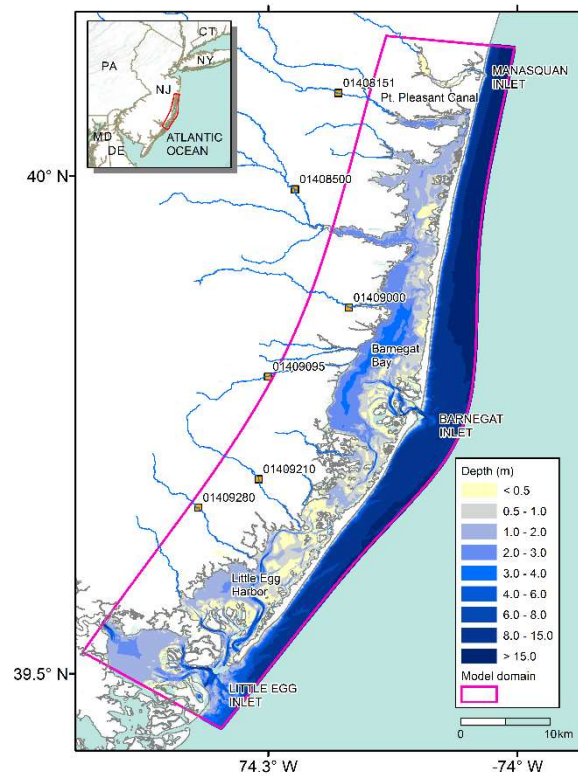


**Figure S1.** Time series for modeled wind near the center of the computational domain. Wind speeds up to 5 m/s were apparent during March 15-19, which contributed to north-south movement of particles in the system during this period.



**Figure S2.** Hydrodynamic model domain (in magenta) and the bathymetry of the study area. U.S. Geological Survey streamflow gages (orange squares) are labeled by station number [29].