

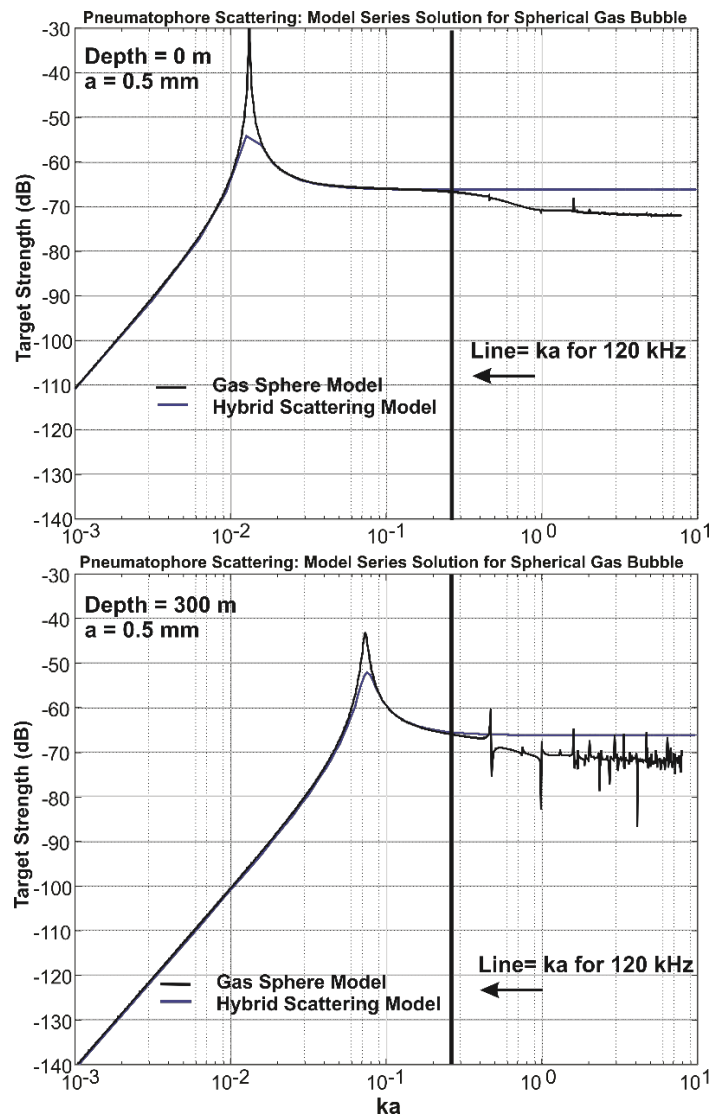
## Supplementary Material

# Coincident Mass Occurrence of Gelatinous Zooplankton in Northern Norway

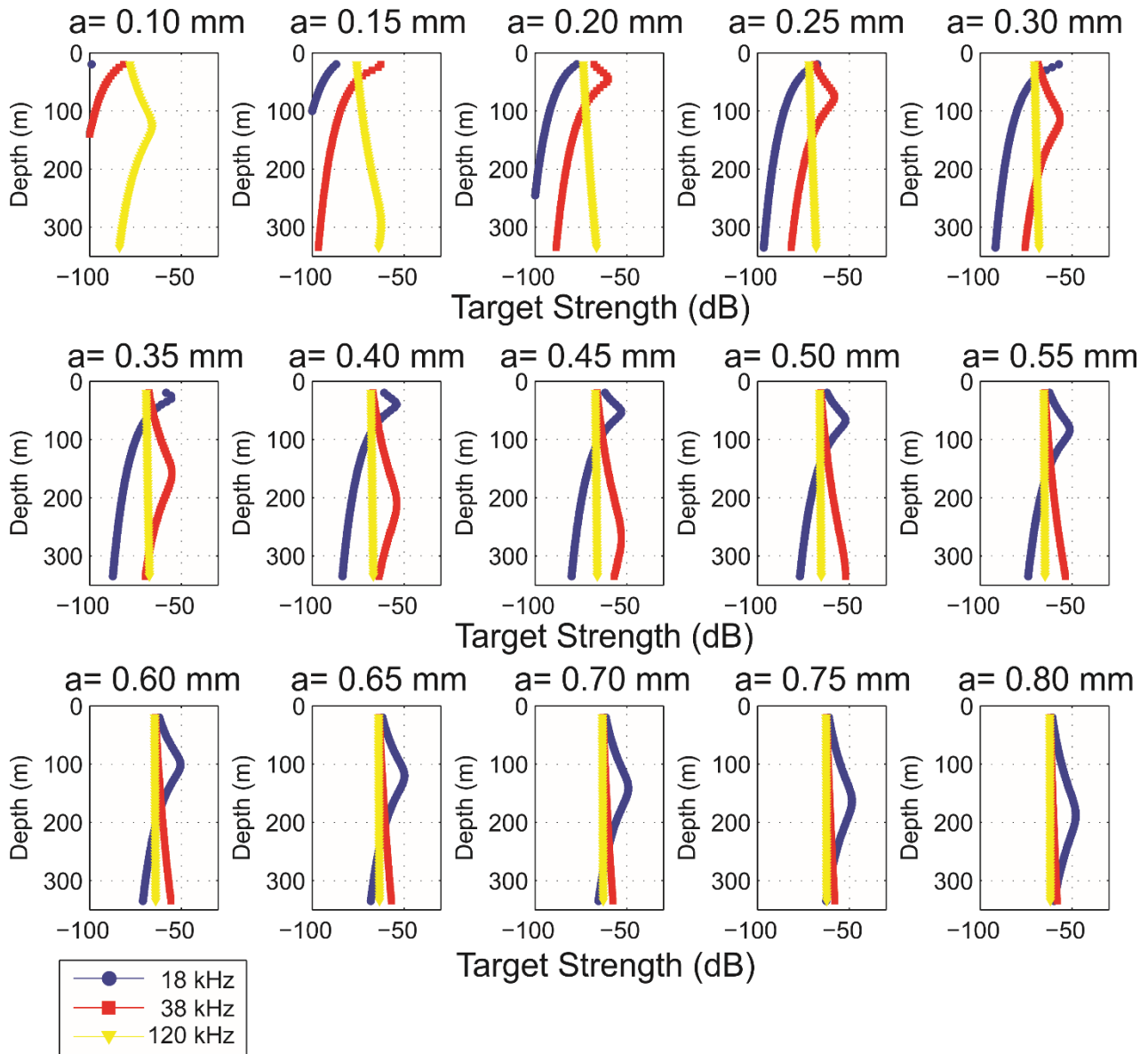
Tor Knutsen\*, Aino Hosia, Tone Falkenhaus, Rasmus Skern-Mauritzen, Peter H. Wiebe, Roger B. Larsen, Asgeir Aglen, Erik Berg

\* Correspondence: tor.knutsen@imr.no

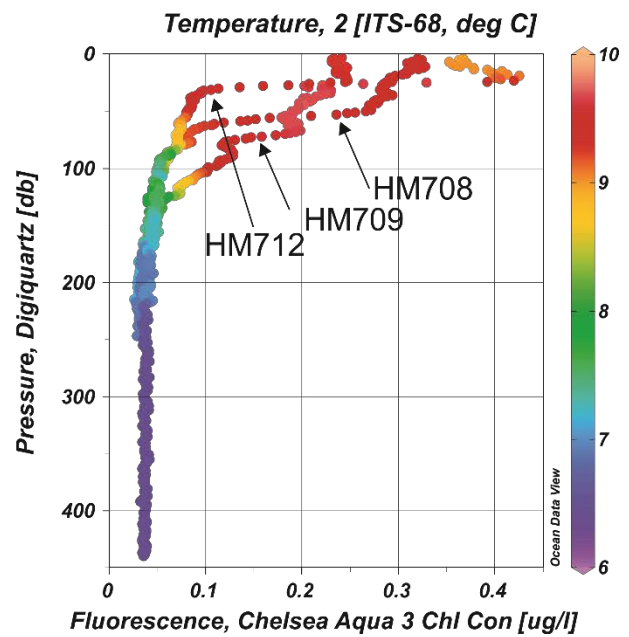
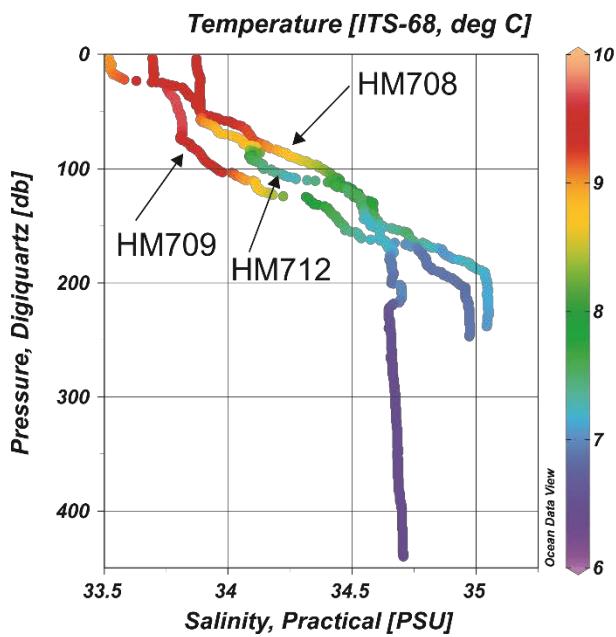
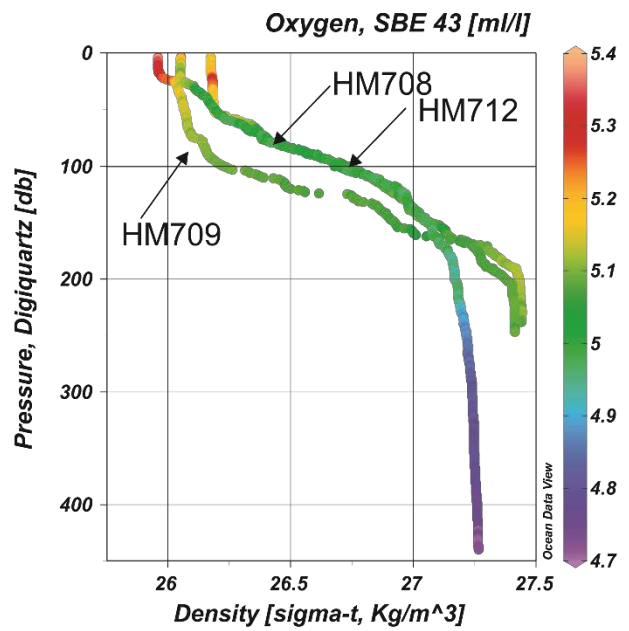
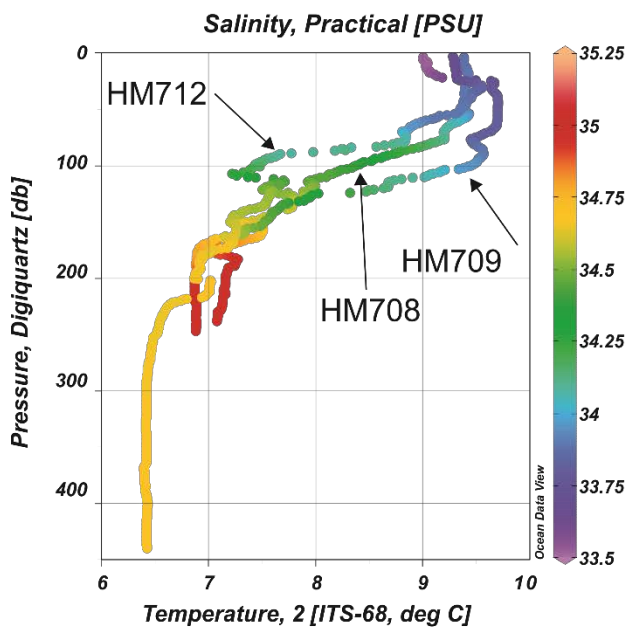
### 1 Supplementary Figures



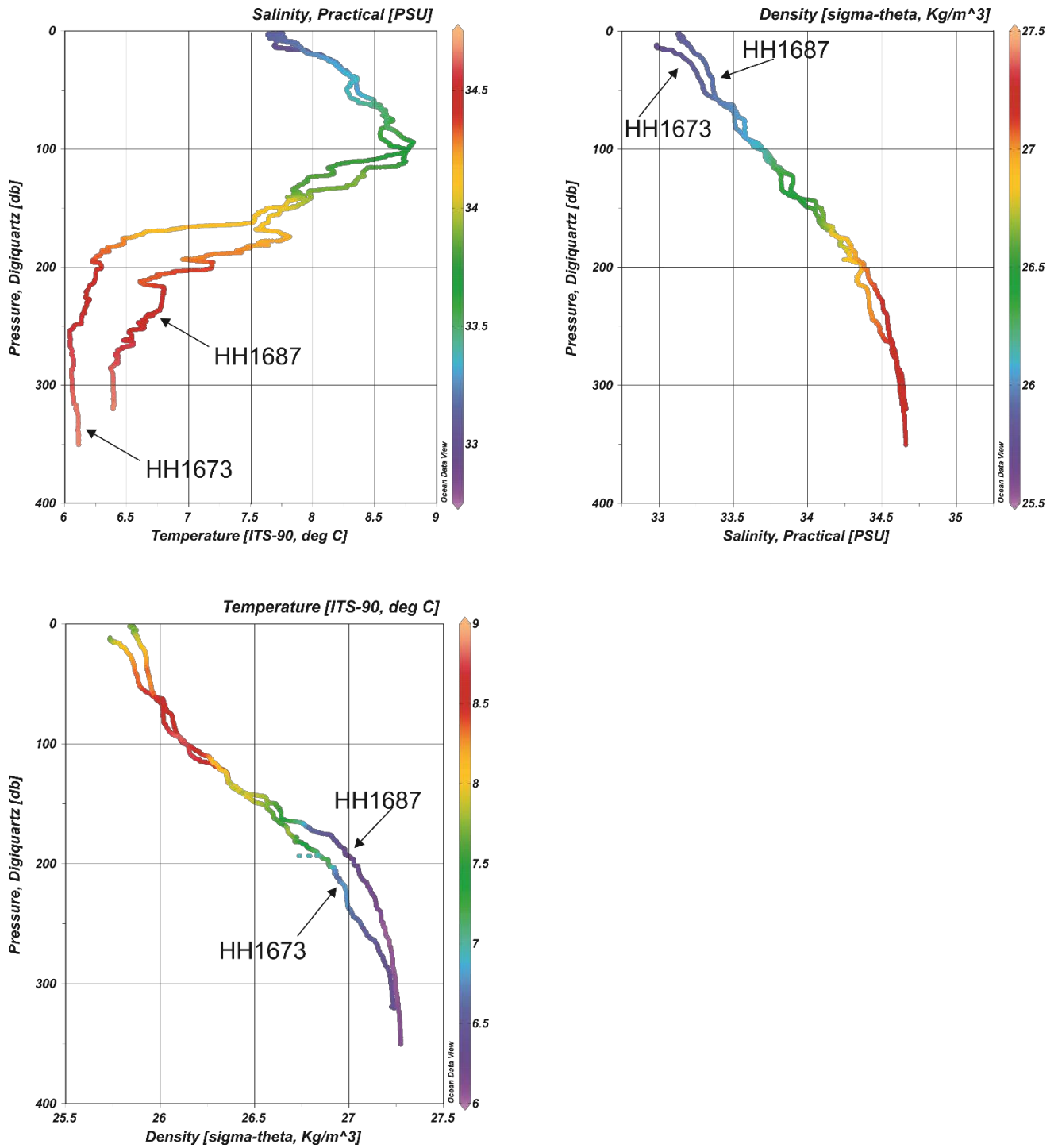
**Supplementary Figure S1.** Modelled target strength, TS [dB re  $1\text{m}^{-2}$ ] versus  $ka$  for a gaseous sphere with bubble radius  $a = 0.5$  mm. Upper panel: 0 m depth, Lower panel: 300 m.



**Supplementary Figure S2.** Depth stratified estimated target strength, TS [dB re  $1 \text{ m}^{-2}$ ] based on the hybrid damped model for siphonophore gas-inclusions with bubble radius ( $a$ ) in the extended range 0.1 – 0.80 mm in steps of 0.05 mm. The figure with  $a = 0.50$  mm most closely resembles the actual measurements presented in Figure 11A.



**Supplementary Figure S3.** Hydrographic conditions in outer coastal waters HM708 (6 October 2015) and HM709 (7 October 2015) compared to the Arnøya basin HM712 (9 October 2015). The prefix HM denotes the RV Håkon Mosby.



**Supplementary Figure S4.** Hydrographic conditions in Lyngenfjord Basin I (HH1673, 3 November 2015) and Kvænangen (HH1687, 6 November 2015). The prefix HH denotes the RV Helmer Hanssen.