

1 **Kin and population recognition in sympatric Lake Constance**
2 **perch (*Perca fluviatilis* L.): can assortative shoaling drive**
3 **population divergence?**

4
5 Jasminca Behrmann-Godel^{*}, Gabriele Gerlach[†] and Reiner Eckmann^{*}

6
7 ^{*}Limnological Institute, University of Konstanz, 78457 Konstanz, Germany

8 [†] Marine Biological Laboratory, Woods Hole, MA 02543-1015, USA

9 Corresponding author: Jasminca Behrmann-Godel Jasminca.Behrmann@uni-konstanz.de

10 tel: ++49 (0) 7531 883532

11 fax: ++49 (0) 7531 883533

12 **Abstract**

13 Prior studies have shown that perch (*Perca fluviatilis* L.) of Lake Constance belong to two
14 genetically different but sympatric populations, and that local aggregations of juveniles and
15 adults contain closely related kin. In this study we analysed the genetic structure of pelagic
16 perch larvae to investigate, if kin structured shoals already exist during early ontogenetic
17 development or might be the result of homing to natal sites. Analysis of the gene frequencies
18 at five microsatellite loci revealed that 3 out of 5 pelagic aggregations of larvae showed
19 significant accumulation of kin. To investigate possible mechanisms of shoal formation, we
20 tested if perch use olfactory cues to recognize their kin. Choice tests in a fluviarium showed
21 preference for odours of unfamiliar kin versus unfamiliar non-kin. Additionally, we showed
22 that perch could differentiate between the odours of the two sympatric populations and
23 significantly preferred unfamiliar and unrelated conspecifics of their own over the foreign
24 population. Our results present a behavioural mechanism that could lead to the observed
25 formation of kin structured shoals in perch. We further discuss if the ability to discriminate
26 between the own and the foreign population could result in assortative mating within
27 populations and thus form the basis of “socially mediated speciation” in perch.

28

29 **Key words:** kin recognition, population recognition, kin structure, microsatellites, relatedness

30

30 **Introduction**

31 The formation of fish shoals is a very common phenomenon and can be found throughout
32 numerous freshwater and marine species. These shoals are often strongly assorted by species,
33 by body size and/or colour (reviewed in Krause et al. 2000 a,b). Additionally a preference to
34 shoal with familiar conspecifics has been shown for a variety of freshwater fish like guppies,
35 *Poecilia reticulata*, (Griffiths and Magurran 1999), bluegill sunfish, *Lepomis macrochirus*,
36 (Dugatkin and Wilson 1992) threespine sticklebacks, *Gasterosteus aculeatus*, (Van Havre and
37 Fitzgerald 1988; Barber and Ruxton 2000) and brown trout, *Salmo trutta*, (Höjesjö et al.
38 1998). But only very little is known about the relationship of shoaling and the genetic
39 structure of natural fish populations. Shoaling with kin can be advantageous since closely
40 related animals are more likely to show co-operative behaviour during risky situations such as
41 predator inspection (Milinski 1987) because helping a relative can increase the indirect fitness
42 of an individual (Hamilton 1964). Several authors studied relatedness between shoal members
43 using allozymes (Ferguson and Noakes 1981; Avise and Shapiro 1986; Dowling and Moore
44 1986; Naish et al. 1993; Hauser et al. 1998; Peuhkuri and Seppae 1998) or microsatellite
45 markers (Pouyaud et al. 1999). The results have been very ambiguous, no indication for kin
46 structured shoals has been found for *Anthias squamipinnis* (Avise and Shapiro 1986),
47 common shiner, *Notropis cornutus*, (Dowling and Moore 1986), European minnow,
48 *Phoxinus phoxinus*, (Naish et al. 1993), Tanganyikan sardine *Limnonthrissa miodon*, (Hauser
49 et al. 1998) and threespine stickleback (Peuhkuri and Seppae 1998), while Ferguson and
50 Noakes (1981) indicated that kin structure in the common shiner might exist. Only Pouyaud et
51 al. (1999) found significant association of kin in shoals of the mouthbrooding tilapia,
52 *Sarotherodon melanotheron*.

53 A preference to shoal with kin would imply some kind of kin recognition mechanism that
54 allows for the differentiation of related conspecifics from non kin. There are two main types

55 of kin recognition, direct familiarity and indirect familiarity (phenotype matching). In the case
56 of direct familiarity, individuals become familiar with members of the same litter or clutch
57 during early ontogeny and prefer these individuals over unfamiliar ones (Olsén 1992). In the
58 case of phenotype matching, an individual learns about the phenotype of close relatives or
59 itself (self-matching) during early development and later compares unfamiliar conspecifics
60 with this learned phenotype to identify kin (Olsén 1992; Sherman 1997). Phenotype matching
61 implies a correlation of the phenotypic traits used for kin recognition and the genotype,
62 because only heritable phenotypic traits can be true indicators for relatedness (Tang-Martinez
63 2001).

64 Kin recognition has been documented for several salmonid species like Arctic charr,
65 *Salvelinus alpinus*, (Olsén 1989), Atlantic salmon, *Salmo salar*, rainbow trout, *Oncorhynchus*
66 *mykiss*, (Brown and Brown 1992), rainbowfish, *Melanotaenia eachamensis*, (Arnold 2000)
67 and zebrafish, *Danio rerio*, (Mann et al. 2003). Contradictory results were obtained for coho
68 salmon, *Oncorhynchus kisutch*, (Quinn and Busack 1985) but see (Quinn and Hara 1986), for
69 sticklebacks (Van Havre and Fitzgerald 1988; Frommen and Bakker 2004) but see (Steck et
70 al. 1999) and for the Trinidadian guppy, *Poecilia reticulata*, (Warburton and Lees 1996) but
71 see (Griffiths and Magurran 1999).

72 However, shoaling with relatives can also be disadvantageous through the risk of inbreeding
73 if related individuals mate. Inbreeding can increase the genetic homozygosity and thus the
74 possible expression of recessive deleterious mutations in offspring (Charlesworth and
75 Charlesworth 1987). Mechanisms to recognize kin can, therefore, be advantageous in two
76 ways, an individual may profit from the benefits of co-operation with relatives and it can
77 minimise inbreeding depression by avoiding to mate with siblings. Griffiths and Armstrong
78 (2001) have shown however that for territorial animals kin associations can also be
79 disadvantageous.

80 On the other hand, outcrossing of individuals from different populations can be
81 disadvantageous as well due to a break-up of co adapted gene complexes or favourable
82 epistatic relationships that have developed as an adaptation to different habitat parameters
83 (Mayr 1963; Shields 1982). Thus with ongoing population divergence, selection should
84 favour mechanisms that lead to a shift from outbreeding enhancement to outbreeding
85 depression (Lynch 1991). For organisms belonging to sympatric populations, the recognition
86 of population-specific cues provides an excellent mechanism to recognize appropriate mating
87 partners of their own population. Species living in highly structured, dark or turbid habitats
88 might evolve the ability to use non-visual features like e.g. acoustic or olfactory (chemical)
89 cues to discriminate between populations. Closely related species of Hawaiian crickets find
90 their mating partners based on calling song differences, suggesting that acoustic features
91 could have been the first cues to change during the speciation process (reviewed in Shaw and
92 Herlihy 2000). For the songbird greenish warbler (*Phylloscopus trochiloides*), Irwin et al.
93 (2001) showed that sexual selection for increased complexity of song is driving population
94 divergence. Unlike kin recognition, olfactory based population recognition in fish has, to our
95 knowledge, only been studied in salmonids (for a review see Olsén 1992). Evidence for
96 population recognition based on chemical cues was provided for Atlantic salmon (Stabell
97 1982; 1987), Arctic charr (Olsén 1986) and coho salmon (Courtenay et al. 1997). Recently,
98 Ward et al. (2004) have shown that chemical cues play a major role in the recognition of
99 familiar conspecifics but can be influenced by different habitat and diet experiences.

100 This study focuses on Eurasian perch (*Perca fluviatilis* L.). During their ontogeny, perch of
101 Lake Constance show a typical habitat shift. Soon after hatching, larvae move to the pelagic
102 zone to feed on zooplankton and return about one month later to the littoral (Wang and
103 Eckmann 1994). As juveniles and adults perch remain in the littoral during summer or in
104 close proximity to the littoral when they move to deeper waters during winter (Wang and

105 Appenzeller 1998). For perch of Lake Constance, pairwise calculations of relatedness
106 provided evidence that aggregations of juveniles and adults, caught in the littoral during
107 summer, were genetically structured, containing closely related kin within age groups
108 (Gerlach et al. 2001). This observed kin structure could be the result of homing of pelagic
109 larvae to natal sites (Aalto and Newsome 1989), or it could be based on kin preference.
110 Calculating the corrected genetic index G_{ST} of between-population divergence for perch of
111 Lake Constance, Gerlach et al.(2001) found a subdivision into two populations with restricted
112 gene flow ($G_{ST} = 0.07$). One population was found to inhabit the eastern the other the western
113 part of the lake while no obvious geographical barrier separated the two.
114 Thus, the aim of our study was twofold. Firstly, we investigated, whether kin aggregations
115 like those observed in juveniles and adults, are already present in free ranging shoals of larval
116 perch. Odour choice tests in the laboratory where conducted to test, whether the kin structured
117 perch aggregations might be based on olfactory kin recognition and kin preference. Secondly,
118 we tested, whether perch of the two sympatric populations also use olfactory recognition to
119 distinguish between conspecifics from the same versus the foreign population.

120

121 **Methods**

122 *Microsatellite genotyping*

123 Perch larvae were sampled on one occasion from the surface in the pelagic zone of Lower
124 Lake Constance with a horizontally trawled plankton net (opening: 0.25 m²). We used a
125 “multi-net”, consisting of five conical nets of the same size that could be opened and closed
126 individually one after the other. Thus during the sampling haul of 722m, each net covered a
127 sampling transect of approx.140m length.

128 Total genomic DNA from 20 larvae per sample (19 larvae in sample 5) was extracted
129 according to standard salt extraction procedures (Sambrook et al. 1989). Larvae were

130 genotyped using five dinucleotide microsatellite loci comprising three isolated from walleye,
131 *Stizostedion vitreum*, (loci SVI 6, 17, 18; GenBank Accession no.: G36962; -63; -64, Borer et
132 al. 1999) and two from yellow perch, *Perca flavescens*, (loci PF 1,5; GenBank Accession no.:
133 AF211826; -30, Leclerc et al. 2000). A summary of the loci characteristics is presented in
134 Table 1. The PCR products were run individually on Spreadex gels (Spreadex TM gels,
135 Elchrom scientific AG, Switzerland: EL 400 for SVI 6,17 and PF 1,5; EL 600 for SVI 18)
136 using the SEA 2000 TM advanced submerged gel electrophoresis apparatus (Elchrom scientific
137 AG, Switzerland). Gels were run at 120 V, 990 mA. Running time depended on allele sizes.
138 Alleles were visualized by dyeing with sybr gold. The allelic size of the PCR products was
139 determined by comparison with a standard M3 marker ladder (Elchrom scientific AG,
140 Switzerland).

141 Observed and expected values for heterozygosity were determined using the GENETIX404
142 computer package (Belkhir et al. 1997). For calculations of genetic relatedness, the pairwise
143 identity index I_{xy} (Mathieu et al. 1990; Castric et al. 2002) was estimated using the IDENTIX
144 computer package (Belkhir et al. 2002), which can detect relatedness in populations using
145 multilocus genotypic data (for details see Belkhir et al. 2002). To detect relatedness within
146 distinct groups (aggregations of perch) belonging to the same population the statistics had to
147 be extended (Belkhir personal communication). To test if larvae within one sample were
148 genetically more related than expected under random distribution, the mean identity index of
149 all perch pairs within one sample was compared with the null distribution of no relatedness.
150 As null distribution, we calculated the distribution of identity indices of randomly generated
151 sub-samples of the same sample size (20 individuals). Sub-samples were generated by
152 random permutation of genotypes in 1000 randomised sub-samples using all five larvae
153 samples as genotype pool. The statistic procedure of testing for significance was then the
154 same as described in Castric et al. (2002).

155

156 ***Kin- and population recognition***

157 During spawning time, perch were captured with gill nets. To obtain full sibs, the egg-strand
158 of a ripe female was cut into pieces, which were then individually fertilised with the sperm of
159 the same male. For maternal half sibs the egg-strand of one female was cut into pieces, which
160 were then fertilised each by a different male. For paternal half sibs, one male was used to
161 fertilise pieces of egg-strands of different females. All pieces of egg-strands were transported
162 to the laboratory and placed separately in 9 L aquaria (constant supply of tap water, 0.1 L
163 min^{-1} , temperature 15°C, 14 h illumination). Thus, each aquarium contained a group of full-
164 sibs. After hatching, temperature was raised to 20 °C during the first week. Perch larvae were
165 fed with copepod nauplii and rotifers for the first 4 days, and afterwards with live artemia
166 nauplii and daphnids. Juveniles were fed with frozen chironomids. Preference tests were
167 carried out with fish between 3 and 6 months of age (6-9 cm total length, 2-6g wet mass).
168 The odour choice tests were carried out in a two choice fluvium (Höglund 1961; Steck et
169 al. 1999; Atema et al. 2002, Fig. 1). The flume was divided into three compartments, the inlet
170 compartment, the test area and the outlet compartment. The inlet compartment was separated
171 in two equal halves by a PVC wall (100 cm) presenting two bodies of moving water separated
172 by a sharp boundary in the test area. Evenness of water flow on both sides of the test
173 compartment was visualised using fluorescent dye. The test area (33 cm x 25 cm) was
174 separated by screens from the other compartments. A slow but permanent flow-through of tap
175 water (4 L min^{-1} , velocity 0.6 cm s^{-1} , temperature 20 °C) ensured that no chemical
176 information about perch was initially present in the flume or was accumulating in the system
177 during the trials. Stimulus water was taken from the holding tanks of the respective stimulus
178 group and was added (7.6 ml min^{-1}) to either side of the inlet compartment using a peristaltic
179 pump. The test area was visually isolated by black cloth from all sides. The compartment was

180 illuminated by two halogen bulbs (same light cycle as in the holding tank). All observations
181 were video taped for later analysis.

182 Since single test fish had shown erratic behaviour and no food intake during preliminary
183 trials, we used a small group of four full sibs out of the same holding tank for the choice
184 experiments in the flume. Acclimation time was between one and eight days, during which
185 fish were fed daily. We defined acclimation to be completed when the fish started feeding
186 directly after food supply. Four different trials were run, with consecutive trials separated by
187 at least 30 min recovery time, when no odour stimulus was supplied. The following trials (1-
188 4) were run with the order of trials set at random; (1) unfamiliar full-sibs vs. unfamiliar non-
189 kin, n = 14; (2) unfamiliar maternal half-sibs vs. unfamiliar non-kin, n = 10; (3) unfamiliar
190 paternal half-sibs vs. unfamiliar non-kin n = 9; (4) unfamiliar and unrelated perch from the
191 own versus unfamiliar perch from the foreign population, n = 13. To account for potential
192 side bias of the fish, the odour stimuli were alternated during trials between the two sides of
193 the flume and were presented two times for three minutes on each side. The number of fish on
194 either side of the test area (relative to the two odour stimuli) was counted every five
195 seconds during a three minute odour supply. After the last trial all four test fish were removed
196 from the flume and excluded from further experiments.

197 For each trial, we calculated the average number of test fish present on that side of the flume,
198 where a particular stimulus was provided. One-way ANOVA (Jmp vers. 4.0) was used to test
199 for differences between the different kin recognition trials (full-sibs, maternal or paternal half-
200 sibs versus non-kin). Since there were no significant differences, the data was pooled for
201 further analysis. A two tailed paired t-test, (Jmp vers. 4.0) was used to compare the average
202 number of fish on each of the two stimulus sides (kin versus non-kin or own versus foreign
203 population).

204

205 **Results**

206 *Microsatellite genotyping*

207 We caught 404 perch larvae (mean 80 larvae, per sample) within the pelagic zone of Lower
208 Lake Constance. The degree of polymorphism at five microsatellite loci varied between 5 and
209 12 alleles per locus. Observed levels of heterozygosity were moderate and ranged from 0.404
210 to 0.687 (Table 1).

211 The I_{xy} values of randomly generated pairs (sub samples of 20 individuals) are shown as null
212 distribution in Fig 2, together with the mean I_{xy} 's for each larvae sample. The mean pairwise
213 identity index in 3 of the 5 net samples departed significantly from the null expectation of no
214 relatedness (Fig. 2, two tailed test, sample 1: $p=0.01$; sample 2: $p=0.20$; sample 3: $p=0.35$;
215 sample 4: $p=0.01$; sample 5: $p=0.04$).

216

217 *Kin- and population recognition*

218 Perch showed a clear reaction to odour supply of stimulus water from conspecifics.

219 Approximately one to two minutes after the beginning of odour supply (odour plume needs
220 one min. to reach the downstream end of the test area) fish became active, swimming
221 upstream and pressing their snouts against the screen. This so called "screen-swimming" was
222 also observed in kin discrimination tests with cichlids and in population recognition tests with
223 salmonids (Barnett 1986; Courtenay et al. 1997), and was used as a measure for stimulus
224 preference.

225 Some groups of fish, although swimming actively, never changed sides during a trial and
226 where, therefore, not able to choose between odour stimuli. Additionally, some fish were
227 completely inactive during a trial (fish were resting on the bottom) and thus were not able to
228 choose between different stimuli either. To eliminate such time intervals we calculated an
229 "activity index" for each of the three minutes of a trial. We divided the observed number of

230 changes between the two sides of the test area during one minute of odour supply by the
231 maximal number of side changes that are possible (four fish x 12 five sec intervals = 48 side
232 changes possible). Minutes with activity indices lower than 0.1 (i.e. less than 10% of the
233 maximal number of side changes were observed) were eliminated. This procedure resulted in
234 unequal sample sizes for different stimulus trials.

235 Given that no significant difference in preference could be seen between the three different
236 kin recognition tests (ANOVA, among all categories of different sibships $F_{2,30} = 2.3, p =$
237 0.139), all kin data were pooled. Perch showed a significant preference for their siblings
238 versus non-kin (two tailed paired t - test, $t = 3.00, n = 33, p = 0.005$; Fig. 3A).

239

240 Given the choice between fish of the same versus the foreign population, perch significantly
241 preferred conspecifics of the own population (two tailed paired t - test, $t = 2.36, n = 13, p =$
242 0.04 , Fig. 3 B).

243

244 **Discussion**

245 ***Microsatellite genotyping***

246 Our genetic data showed that larval perch stayed together in kin groups. Two out of five
247 larvae samples that were collected in close proximity shared more and one sample shared less
248 alleles than randomly expected, both indicating relatedness. This seems to be puzzling but the
249 level of relatedness in a family group highly depends upon the specific genotype of the
250 parents. If the shoal consists of only one family, the number of shared alleles between
251 individuals would be higher than under random distribution of individuals. However, if the
252 shoal consists of members of several families that are less related than any families taken
253 randomly from the population, relatedness could be significantly lower than under random
254 distribution. (Bernatchez and Castric personnel communication).

255 Our sampling method did not allow the identification of distinct larval shoals. Thus a
256 sampling of two or more families within one trawl could well have occurred. Given the
257 conservative statistical analysis (Castric et al. 2002) we assume that in reality the degree of
258 relatedness in aggregations of perch larvae might be even higher. These kin groups may
259 persist for years because a high degree of relatedness was found in groups of juvenile and
260 adult perch (Gerlach et al. 2001). Therefore, we conclude that related perch stay together
261 throughout their early development and later in life. Thus homing of perch to their natal sites,
262 although it could occur, is not the exclusive cause for kin structure in age groups.

263

264 ***Kin- and population recognition***

265 We could show that a fish species, which has been found in kin aggregations in the field
266 (Gerlach et al. 2001 and this study), recognises and prefers chemical stimuli of siblings in
267 laboratory experiments. Until recently the rather few studies of this type have shown
268 contradictory results. Brown & Brown (1992; 1993; 1996) have shown in numerous
269 laboratory experiments that salmonids including Atlantic salmon can discriminate kin and
270 show kin-biased social behaviour by gaining benefits in higher growth rates and lesser
271 aggressive interactions with siblings as territory neighbours. However, a field study of
272 Atlantic salmon larvae and fry in their natural habitat showed that although numerous fish
273 were closely related as shown by microsatellite analysis, relatives did not preferentially
274 occupy neighbouring territories (Fontaine and Dodson 1999). Griffiths and Armstrong (2001)
275 showed that heterogeneous advantage could outweigh the benefits of kin biased behaviour for
276 Atlantic salmon in his natural habitat.

277 Studies on threespine sticklebacks show even more conflicting results. Whereas Van Havre
278 and Fitzgerald (1988) could show stickleback fry to preferentially shoal with kin when
279 exposed to visual and chemical stimuli in the laboratory, Steck et al. (1999) found no

280 preference for siblings in juvenile sticklebacks using only chemical stimuli in a flume.
281 However, a recent analysis with adult sticklebacks revealed preference for familiar kin
282 (Frommen and Bakker 2004). Genetic data on allozyme polymorphism in 24 free ranging
283 stickleback shoals did not show any kin structure within fish shoals (Peuhkuri and Seppae
284 1998).

285 Our genetic analysis on the relatedness of free ranging perch larvae clearly shows that even
286 during the mobile pelagic phase kin structure of shoals is maintained. Aggregations of newly
287 hatched perch could be transported passively in the water column. In this case, related fish
288 would stay together independent of any preference for distinct conspecifics. However, with
289 ongoing ontogenetic development during the pelagic phase, perch grow to active swimmers
290 and aggregate in free-ranging shoals (personal observations). So far, the kin structure in perch
291 shoals could still be the result of a preference to shoal with familiar fish. However, our
292 olfactory test shows that kin recognition is not based on familiarity, since even unfamiliar sibs
293 were preferred over unfamiliar unrelated fish.

294 Helfman (1984) investigated shoaling behaviour in adult yellow perch (12-20 cm TL) of
295 Cazenovia Lake, Madison County, New York and detected low school fidelity in this species.
296 He argues that under high predator pressure shoal fidelity may be part of the anti-predator
297 function of schooling and could result in strong association of individual fish. Under weak
298 predator pressure, however, other functions of schooling e.g. increased foraging efficiency
299 could lead to decreased importance of shoaling with familiar or related individuals and thus
300 would lead to weak associations between individual fish. Larval perch in contrast to adult
301 yellow perch in Cazenovia Lake are under much higher predation pressure. Under these
302 conditions high shoal fidelity in Lake Constance perch and even association with familiar or
303 related individuals could have evolved as anti-predator function based on mutualistic or even
304 altruistic acts directed towards kin.

305 Olfactory recognition and preference in perch is based on phenotype matching learned from
306 related individuals (Brown et al. 1993; Tang-Martinez 2001). Variability of major
307 histocompatibility complex (MHC) genes might be involved in these recognition processes
308 (Bernatchez and Landry 2003). Female sticklebacks differentiated between males according
309 to sequence differences of their MHC alleles (Reusch et al. 2001), juvenile Arctic charr chose
310 the water scented by fish with their own MHC type (Olsén et al. 1998; 2002).

311 In this study we could show for two sympatric perch populations that juveniles of one
312 population could recognise the own versus the foreign population by waterborne chemical
313 cues. Similar to some terrestrial species that use acoustic features as non-visual cues to
314 discriminate between populations (Irwin et al. 2001; Shaw and Herlihy 2000), chemical cues
315 are also an appropriate means for population discrimination especially for aquatic species .
316 Most experiments on population recognition in fish have been done with salmonids.

317 Migrating salmonid species learn about the odour of their natal rivers as juveniles and use it
318 for orientation when they return as adults to spawn in freshwater rivers (reviewed by Hasler
319 and Scholz 1983). However it has also been hypothesized that salmonids are guided to their
320 natal rivers by population specific odours of juveniles. Preference tests in the laboratory
321 showed that salmonids can recognise population specific cues and mostly prefer the odour of
322 the same over a foreign population (reviewed in Olsén 1992). We could show that juvenile
323 perch prefer odours of the own versus a foreign population that lives in sympatry within the
324 same lake. The ability of juvenile perch to discriminate between the own and the foreign
325 population could be based on olfactory imprinting on population specific cues that could be
326 used later in life for mate choice decisions. This has also been suggested for salmon fry
327 (Courtenay et al. 1997). Further experiments are necessary to test whether perch mate
328 assortatively within populations and prefer mating partners of the own over the foreign
329 population, as our genetic data indicate.

330 We have shown that perch use olfactory cues in another important context i.e. for kin
331 discrimination. We hypothesize that kin recognition is the basal mechanism from which
332 olfactory based population recognition was derived. It is conceivable that the specific allelic
333 composition of MHC genes, which are known to influence the individual body odour
334 (Apanius et al. 1997), are involved in both cases. In this scenario, individuals would recognize
335 family-specific MHC alleles, as has been shown for house mice (for a review see Penn and
336 Potts 1999) and also for Arctic charr (Olsén et al. 1998; 2002), as well as population-specific
337 MHC alleles. Thus during mate choice, olfactory discrimination of adult perch could lead to
338 assortative mating within populations and avoid inbreeding at the same time. This would be a
339 perfect mechanism to reinforce reproductive isolation between the two sympatric populations.
340 By combining behavioural and genetic data, we present a possible mechanism for the
341 observed maintenance of the two genetically different populations of perch in Lake
342 Constance. We believe that ours is the first empirical study suggesting that social preferences
343 might drive population divergence.
344

344 **Acknowledgements**

345 We thank Louis Bernatchez, Vincent Castric and Jelle Atema for discussion and comments
346 and Khalid Belkhir for providing a special version of IDENTIX to calculate relatedness in
347 sub-samples. We further thank two anonymous referees whose comments greatly improved
348 the manuscript. Funding was provided by Deutsche Forschungsgemeinschaft within the
349 collaborative research center SFB 454, Littoral of Lake Constance, the “Fonds der
350 Chemischen Industrie”, University of Konstanz, and the “Konrad Adenauer-Stiftung”. We
351 declare that the experiments we have presented here comply with the current law of Germany.

352

353 **Literature**

- 354 Aalto SK, Newsome GE (1989) Evidence of demic structure for a population of yellow perch
355 (*Perca flavescens*). *Can. J. Fish. Aquat. Sci.* 46:184-190
- 356 Apanius V, Penn D, Slev PR, Ruff LR, Potts WK (1997) The nature of selection on the major
357 histocompatibility complex. *Crit. Rev. Immunol.* 17:179-224
- 358 Arnold KE (2000) Kin recognition in rainbowfish (*Melanotaenia eachamensis*): sex, sibs and
359 shoaling. *Behav. Ecol. Sociobiol.* 48:385-391
- 360 Atema J, Kingsford M, Gerlach G (2002) Larval reef fish could use odour for detection,
361 retention and orientation to reefs. *Mar. Ecol. Prog. Ser.* 241:151-160
- 362 Avise JC, Shapiro DY (1986) Evaluating kinship of newly settled juveniles within social
363 groups of the coral reef fish *Anthias squamipinnis*. *Evolution* 40:1051-1059
- 364 Barber I, Ruxton GD (2000) The importance of stable schooling: Do familiar sticklebacks
365 stick together? *Proc. R. Soc. Lond. B* 267:151-155
- 366 Barnett C (1986) Rearing conditions affect chemosensory preferences in young cichlid fish.
367 *Ethology* 72:227-235

368 Belkhir K, Borsa P, Goudet J, Chikhi L, Bonhomme F (1997) Genetix v. 3.0, logiciel sous
369 Windows TM pour la génétique des populations. Laboratoire Génome, Populations,
370 Interactions, CNRS UPR 9060, Université Montpellier 2, Montpellier
371 Belkhir K, Castric V, Bonhomme F (2002) IDENTIX, a software to test for relatedness in a
372 population using permutation methods. Mol. Ecol. Notes. 2:611-614
373 Bernatchez L, Landry C (2003) MHC studies in nonmodel vertebrates: what have we learned
374 about natural selection in 15 years? J. Evolution. Biol. 16:363-377
375 Borer SO, Miller LM, Kapuscinski AR (1999) Microsatellites in walleye *Stizostedion vitreum*.
376 Mol. Ecol. 8:336-338
377 Brown G, E., Brown J, A., Crosbie A, M. (1993) Phenotype matching in juvenile rainbow
378 trout. Anim. Behav. 46:1223-1225
379 Brown GE, Brown JA (1992) Do rainbow trout and Atlantic salmon discriminate kin? Can. J.
380 Zool. 70:1636-1640
381 Brown GE, Brown JA (1993) Do kin always make better neighbours? the effects of territory
382 quality. Behav. Ecol. Sociobiol. 33:225-231
383 Brown GE, Brown JA (1996) Does kin-biased territorial behavior increase kin-biased
384 foraging in juvenile salmonids. Behav. Ecol. 7:24-29
385 Brown JA, Colgan PW (1986) Individual and species recognition in centrarchlid fishes:
386 evidence and hypotheses. Behav. Ecol. Sociobiol. 19:373-379
387 Castric V, Bernatchez L, Belkhir K, Bonhomme F (2002) Heterozygote deficiencies in small
388 lacustrine populations of brook charr *Salvelinus fontinalis* Mitchell (Pisces,
389 Salmonidae): a test of alternative hypotheses. Heredity 89:27-35
390 Charlesworth D, Charlesworth B (1987) Inbreeding depression and its evolutionary
391 consequences. Ann. Rev. Ecol. Syst 18:287-368

392 Courtenay SC, Quinn TP, Dupuis HMC, Groot C, Larkin PA (1997) Factors affecting the
393 recognition of population-specific odours by juvenile coho salmon. *J. Fish. Biol.*
394 50:1042-1060

395 Dowling TE, Moore WS (1986) Absence of population subdivision in the common shiner *N.*
396 *cornutus* (Cyprinidae). *Environ. Biol. Fishes* 15:151-155

397 Dugatkin LA, Wilson DS (1992) The prerequisites for strategic behaviour in bluegill sunfish
398 *lepomis macrochirus*. *Anim. Behav.* 44:223-230

399 Ferguson MM, Noakes DLG (1981) Social grouping and genetic variation in common
400 shiners, *Notropis cornutus* (Pisces, Cyprinidae). *Environ. Biol. Fishes* 6:357-360

401 Fontaine PM, Dodson JJ (1999) An analysis of the distribution of juvenile Atlantic salmon
402 (*Salmo salar*) in nature as a function of relatedness using microsatellites. *Mol. Ecol.*
403 8:189-198

404 Frommen J, Bakker TCM (2004) Adult threespine sticklebacks prefer to shoal with familiar
405 kin. *Behaviour* 141:1401-1409

406 Gerlach G, Schardt U, Eckmann R, Meyer A (2001) Kin-structured subpopulations in
407 Eurasian perch (*Perca fluviatilis* L.). *Heredity* 86:213-221

408 Griffiths SW, Armstrong JD (2001) The benefits of genetic diversity outweigh those of kin
409 association in a territorial animal. *Proc. R. Soc. Lond. B.* 268:1293-1296

410 Griffiths SW, Magurran AE (1999) Schooling decisions in guppies (*Poecilia reticulata*) are
411 based on familiarity rather than kin recognition by phenotype matching. *Behav. Ecol.*
412 *Sociobiol.* 45:437-443

413 Hamilton WD (1964) The genetical evolution of social behaviour. *J. Theor. Biol.* 7:1-16

414 Hasler AD, Scholz AT (1983) *Olfactory Imprinting and Homing in Salmon*. Springer, Berlin
415 Heidelberg New York

416 Hauser L, Carvalho GR, Pitcher TJ (1998) Genetic population structure in the Lake
417 Tanganyika sardine *Limnothrissa miodon*. J. Fish Biol. Supplement A 53:413-429
418 Helfman GS (1984) School fidelity in fishes: the yellow perch pattern. Anim. Behav. 32:663-
419 672
420 Höglund LB (1961) The reaction of fish in concentration gradients. Rep. Inst. Freshw. Res.
421 Drottningholm 43:1-147
422 Höjesjö J, Johnsson JI, Petersson E, Järvi T (1998) The importance of being familiar:
423 individual recognition and social behavior in sea trout (*Salmo trutta*). Behav. Ecol.
424 9:445-451
425 Irwin DE, Bensch S, Price TD (2001) Speciation in a ring. Nature 409:333-337
426 Krause J, Butlin RK, Peuhkuri N, Pritchard VL (2000a) The social organization of fish
427 shoals: a test of the predictive power of laboratory experiments for the field. Biol. Rev.
428 Camb. Philos. Soc. 75:477-501
429 Krause J, Hoare DJ, Croft D, Lawrence J, Ward A, Ruxton GD, Godin JG, James R (2000b)
430 Fish shoal composition: mechanisms and constraints. Proc. R. Soc. Lond. B.
431 267:2011--2017
432 Landry C, Garant D, Duchesne P, Bernatchez L (2001) 'Good genes as heterozygosity': The
433 major histocompatibility complex and mate choice in Atlantic salmon (*Salmo salar*).
434 Proc. R. Soc. Lond. B. 268:1279-1285
435 Leclerc D, Wirth T, Bernatchez L (2000) Isolation and characterization of microsatellite loci
436 in the yellow perch (*Perca flavescens*), and cross-species amplification within the
437 family Percidae. Mol. Ecol. 9:993-1011
438 Lynch M (1991) The genetic interpretation of inbreeding depression and outbreeding
439 depression. Evolution 45:622-629

440 Mann KD, Turnell ER, Atema J, Gerlach G (2003) Kin recognition in juvenile zebrafish
441 (*Danio rerio*) based on olfactory cues. Biol. Bull. 205:224-225

442 Mathieu E, Roux AM, Bonhomme F (1990) Épreuves de validation dans l'analyse de
443 structures génétiques multivariées: comment tester l'équilibre panmitique? Rev. Stat.
444 App. 38:47-66

445 Mayr E (1963) Animal Species and Evolution. Harvard University Press, Cambridge
446 Massachusetts

447 Milinski M (1987) Tit-for tat in sticklebacks and the evolution of cooperation. Nature
448 325:433-437

449 Naish KA, Carvalho GR, Pitcher TJ (1993) The genetic structure and microdistribution of
450 shoals of *Phoxinus phoxinus*, the European minnow. J. Fish Biol. Supplement A
451 43:75-89

452 Nei M (1987) Molecular Evolutionary Genetics. Columbia University Press, New York

453 Olsén KH (1986) Chemoattraction between juveniles of two sympatric stocks of Arctic charr
454 (*Salvelinus alpinus* (L.)) and their gene frequency of serum esterases. J. Fish Biol.
455 28:221-231

456 Olsén KH (1989) Sibling recognition in juvenile Arctic charr, *Salvelinus alpinus* (L.). J. Fish
457 Biol. 34:571-581

458 Olsén HK (1992) Kin recognition in fish mediated by chemical cues. In: Hara TJ (ed) Fish
459 chemoreception. Chapman & Hall, London, pp 229-248

460 Olsén KH, Grahn M, Lohm J (2002) Influence of MHC on sibling discrimination in Arctic
461 charr, *Salvelinus alpinus* (L.). J. Chem. Ecol. 28:21-40

462 Olsén KH, Grahn M, Lohm J, Langefors A (1998) MHC and kin discrimination in juvenile
463 Arctic charr, *Salvelinus alpinus* (L.). Anim. Behav. 56:319-327

464 Penn DJ, Potts WK (1999) The evolution of mating preferences and Major
465 Histocompatibility Complex genes. *Am. Nat.* 153:145-164

466 Peuhkuri N, Seppae P (1998) Do three-spined sticklebacks group with kin? *Ann. Zool. Fenn.*
467 35:21-27

468 Pouyaud L, Desmarais E, Chenuil A, Agnese JF, Bonhomme F (1999) Kin cohesiveness and
469 possible inbreeding in the mouthbrooding tilapia *Sarotherodon melanotheron* (Pisces
470 Cichlidae). *Mol. Ecol.* 8:803-812

471 Quinn TP, Busack CA (1985) Chemosensory recognition of siblings in juvenile coho salmon
472 (*Oncorhynchus kisutch*). *Anim. Behav.* 33:51-56

473 Quinn TP, Hara TJ (1986) Sibling recognition and olfactory sensitivity in juvenile coho
474 salmon. *Can. J. Zool.* 64:921-925

475 Reusch TBH, Häberli MA, Aeschlimann PB, Milinski M (2001) Female sticklebacks count
476 alleles in a strategy of sexual selection explaining MHC polymorphism. *Nature*
477 414:300-302

478 Sambrook J, Fritsch EF, Maniatis T (1989) *Molecular Cloning: a Laboratory Manual*. Cold
479 Spring Harbor Laboratory Press, New York

480 Shaw KL, Herlihy DP (2000) Acoustic preference functions and song variability in the
481 Hawaiian cricket *Laupala cerasina*. *Proc. R. Soc. Lond. B* 267:577-584

482 Sherman PW, Reeve HK, Pfennig DW (1997) Recognition systems. In: Krebs JR, Davies NB
483 (eds) *Behavioral ecology: an evolutionary approach*. Blackwell Scientific, Oxford, pp
484 69-96

485 Shields WM (1982) *Philopatry, inbreeding and the evolution of sex*. State University of New
486 York Press, Albany New York

487 Stabell OB (1982) Detection of natural odorants by Atlantic salmon parr using positive
488 rheotaxis olfactometry. In: Brannon EL, Salo EO (eds) Proc. Salmon and Trout
489 Migratory Behavior Symp. Univ. Washington Press, Seattle, pp 71-78

490 Stabell OB (1987) Intraspecific pheromone discrimination and substrate marking by Atlantic
491 salmon parr. J. Chem. Ecol. 13:1625-1643

492 Steck N, Wedekind C, Milinski M (1999) No sibling odour preference in juvenile threespined
493 sticklebacks. Behav. Ecol. 10:493-497

494 Tang-Martinez Z (2001) The mechanisms of kin discrimination and the evolution of kin
495 recognition in vertebrates: A critical re-evaluation. Behav. Process. 53:21-40

496 Van Havre N, Fitzgerald GJ (1988) Shoaling and kin recognition in the threespine Stickleback
497 (*Gasterosteus aculeatus* L.). Biol. Behav. 13:190-201

498 Wang N, Appenzeller A (1998) Abundance, depth distribution, diet composition and growth
499 of perch (*Perca fluviatilis*) and burbot (*Lota lota*) larvae and juveniles in the pelagic
500 zone of Lake Constance. Ecol. Freshwat. Fish 7:176-183

501 Wang N, Eckmann R (1994) Distribution of perch (*Perca fluviatilis* L.) during their first year
502 of life in Lake Constance. Hydrobiologia 277:135-143

503 Warburton K, Lees N (1996) Species discrimination in guppies: learned responses to visual
504 cues. Anim. Behav. 52:371-378

505 Ward AJ, Krause J (2004) The effects of habitat- and diet-based cues on association
506 preferences in three-spined sticklebacks. Behav. Ecol. 15:925-929

507

507 **Figure legends**

508

509 Figure1. Experimental choice fluvium for odour preference tests with perch

510

511 Figure 2. Frequency distribution of coefficients of relatedness (pairwise identity index
512 calculated by the IDENTIX computer package (Belkhir et al. 2002). The distribution was
513 calculated (1000 randomizations) based on the allele frequencies of larvae caught in the
514 pelagic zone of Lake Constance assuming random association of monolocus genotypes.

515 Arrows indicate observed values of relatedness in five samples (s1-s5) of perch larvae (for
516 details see text).

517

518 Figure 3. Outcome of odour choice tests in a fluvium. Groups of four test fish (full sibs of
519 the same holding tank) were given the choice between different odour stimuli. As measure for
520 stimulus preference, the mean number of fish (error bars: SE) on the side where the distinct
521 stimulus was added is presented a: Black bar= kin odour, light bar= non-kin odour (two tailed
522 paired *t*- test, $t = 3.00$, $n = 33$, $p = 0.005$). b: Black bar= odour of same population, light bar=
523 odour of the foreign population (paired *t*- test, $t = 2.36$, $n = 13$, $p = 0.04$)

524

525

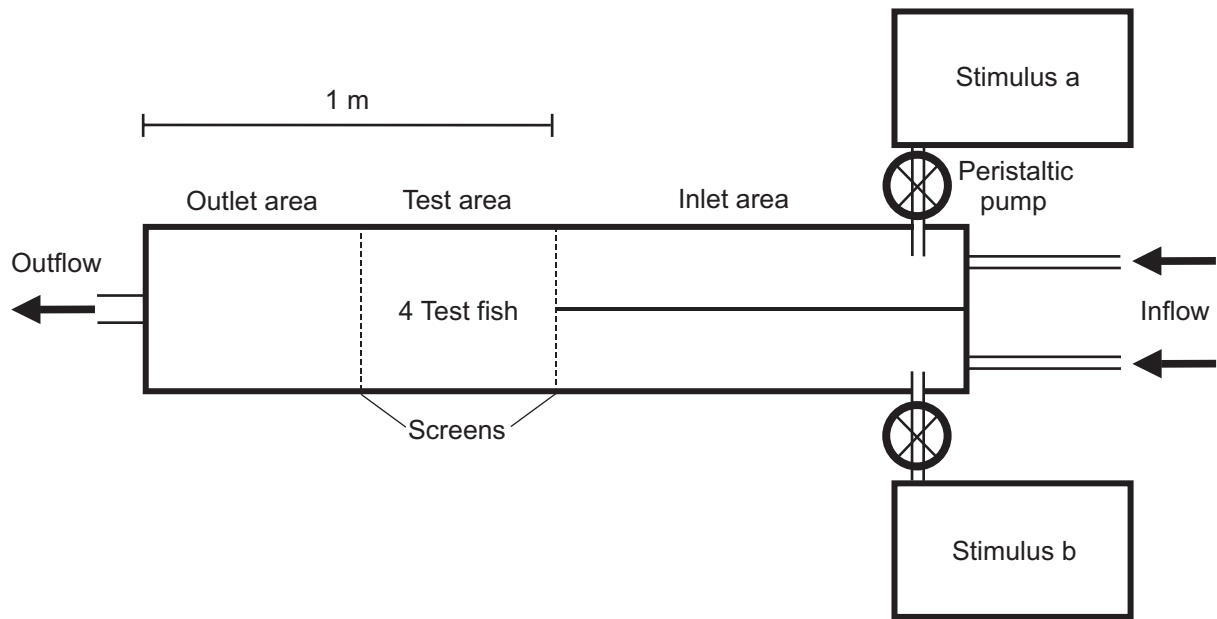
525

526 Table 1. Microsatellite characteristics. Perch larvae (n = 99) examined with five
 527 microsatellites were caught in the pelagic zone of Lower Lake Constance (western
 528 population). Subscripts at the locus names show the repeat motives. H_{obs} = observed
 529 heterozygosity, H_{exp} = unbiased expected heterozygosity (Nei 1987).

Locus	No. of alleles	Size range (bp)	H_{obs}	H_{exp}	Primer sequences
SVI 18 _(AC)	6	160-174	0.616	0.546	GATCTGTAAACTCCAGCGTG CTTAAGCTGCTCAGCATCCAGG
SVI 17 _(AC)	6	110-142	0.475	0.550	GCGCACTCTCGCATAGGCCCTG CGTTAAAGTCCTTGGAAACC
SVI 6 _(AC)	5	106-120	0.667	0.616	CATATTATGTAGAGTGCAGACCC TGAGCTTCACCTCATATTCC
PF 1 _(GA)	12	112-140	0.687	0.737	AAGCAGCCTGATTATATATC CAGACAATTAACATGCAAC
PF 5 _(GT)	6	134-152	0.404	0.471	TGAGAGCCCATGAATTAC GCAAACACAGCCAATTTAG

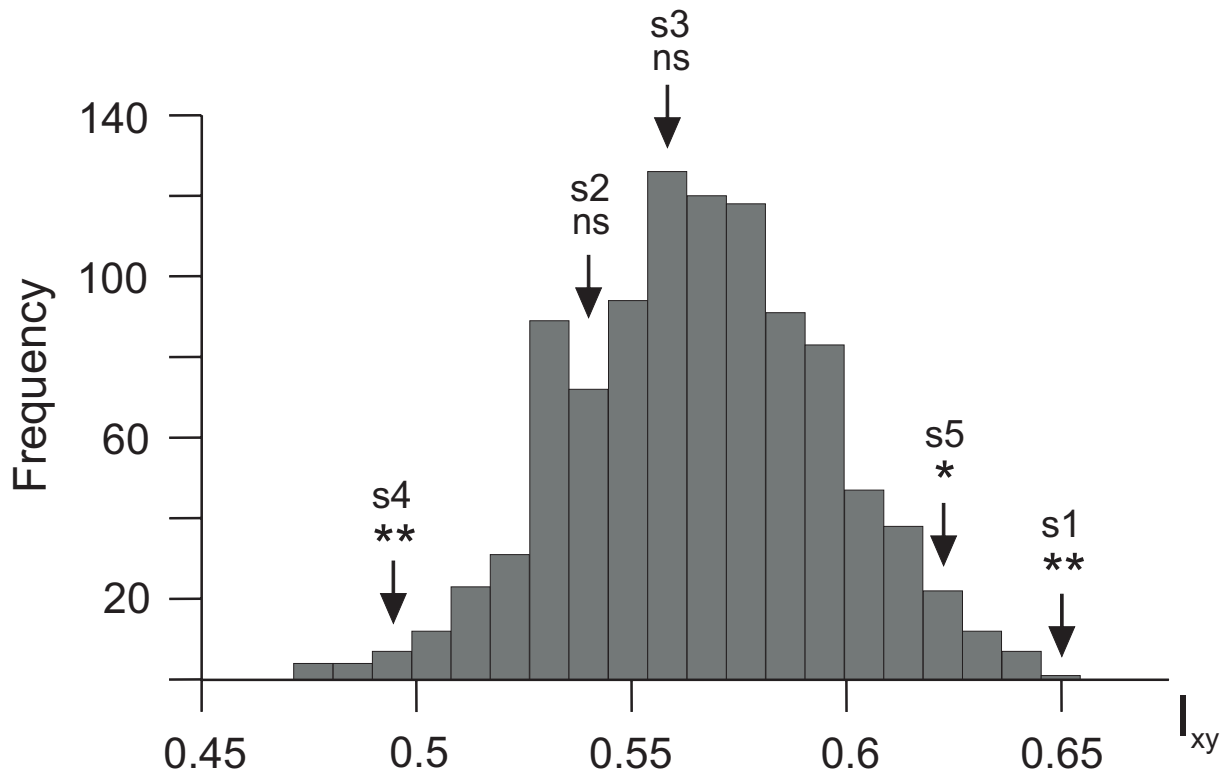
530

531



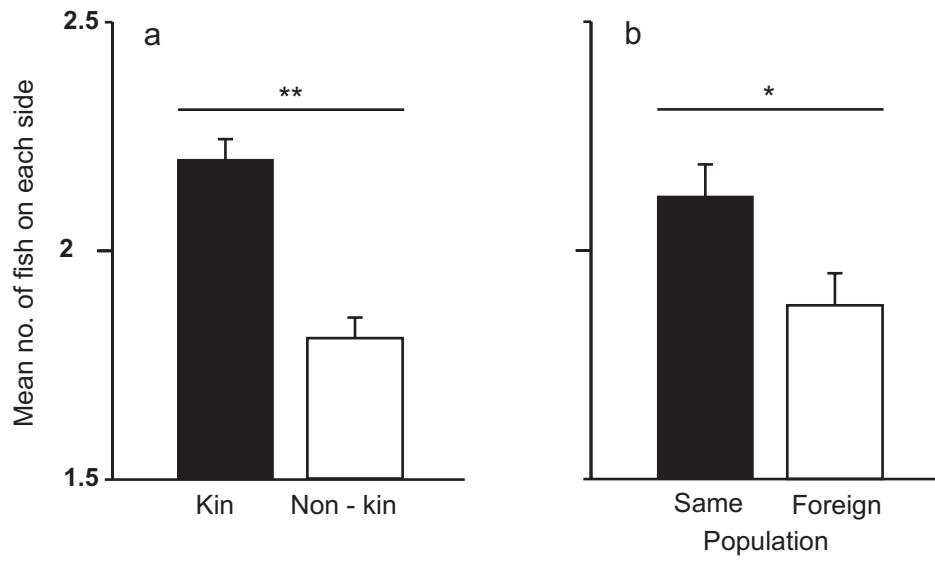
531 Figure 1 Behrmann-Godel et al.

532



532 Figure 2 Behrman-Godel et al.

533



533 Figure 3 Behrmann-Godel et al.