

1 Detection of low frequency tones and whale predator sounds by the American sand lance

2 *Ammodytes americanus*

3  
4  
5 S.M. Strobel<sup>†‡</sup>, T.A. Mooney<sup>‡\*</sup>

6  
7  
8 <sup>†</sup>*Department of Ecology and Evolutionary Biology, Princeton University, 106A Guyot Hall,*  
9 *Princeton, NJ, 08544, U.S.A. and <sup>‡</sup>Biology Department, Woods Hole Oceanographic Institution,*  
10 *266 Woods Hole Rd., Woods Hole, MA, 02543, U.S.A.*

11  
12  
13 Hearing of *A. americanus*

14  
15  
16 \*Author to whom correspondence should be addressed. Tel: 508 289 3174; Fax: 508 457 2089;  
17 amooney@whoi.edu

18

19

20

21 Auditory evoked potentials (AEPs) were used to measure the hearing range and auditory  
22 sensitivity of the American sand lance *Ammodytes americanus*. Responses to amplitude-  
23 modulated tone pips indicated that the hearing range extended from 50 to 400 Hz. Sound  
24 pressure thresholds were lowest between 200 and 400 Hz. Particle acceleration thresholds  
25 showed an improved sensitivity notch at 200 Hz but not substantial differences between  
26 frequencies and only a slight improvement in hearing abilities at lower frequencies. The hearing  
27 range was similar to Pacific sand lance *A. personatus* and variations between species may be due  
28 to differences in threshold evaluation methods. AEPs were also recorded in response to pulsed  
29 sounds simulating humpback whale *Megaptera novaeangliae* foraging vocalizations termed  
30 ‘megapclicks’. Responses were generated with pulses containing significant energy below 400  
31 Hz. No responses were recorded using pulses with peak energy above 400 Hz. These results  
32 show that *A. americanus* can detect the particle motion component of low frequency tones and  
33 pulse sounds, including those similar to the low frequency components of megapclicks.  
34 *Ammodytes americanus* hearing may be used to detect environmental cues and the pulsed signals  
35 of mysticete predators.

36

37

38 **Key Words:** auditory brainstem response ABR; communication; feeding; noise; sand eel;  
39 sensory ecology.

## INTRODUCTION

40

41

42

43 Low frequency sounds are generated by biotic and abiotic sources and can be propagated  
44 relatively efficiently underwater (Urick, 1983). These acoustic cues and signals are often  
45 available for marine organisms (Webster *et al.*, 1992) and many fishes use sound as part of  
46 important biological activities, including attracting mates, defending territories and spawning  
47 activities (Myrberg, 1986; Lobel, 1992; Myrberg, 1997; Mann & Lobel, 1998). Depending on  
48 the associated anatomical structures, fishes detect sound with or without auditory specializations  
49 (Popper & Fay, 2011). While both sound pressure and particle motion components of sound are  
50 often available to fish (Kalmijn, 1988), species without swim bladders are considered to detect  
51 particle motion as the primary stimulus (Enger & Andersen, 1967; Chapman & Sand, 1974).  
52 Responses to sound stimuli have been measured in a variety of ways including natural  
53 behavioural reactions (Nelson & Gruber, 1963), classical conditioning (Fay, 1969) and  
54 physiological measures (Corwin *et al.*, 1982; Kenyon *et al.*, 1998).

55

56

57 While fishes are clearly adapted to detect and avoid predators, specific responses to  
58 predator sounds are far less documented. Yet, evaluating an auditory scene, including detecting  
59 predators, has been suggested as a primary adaptive force for developing hearing abilities in  
60 fishes (Bregman, 1990; Fay, 1992; Fay & Popper, 2000). Presumed predator escape responses  
61 have been elicited by exposing Atlantic salmon *Salmo salar* L. 1758 to 10 Hz tones (Knudsen *et*  
62 *al.*, 1992). Alewives *Alosa pseudoharengus* Wilson 1811 and shad *Alosa sapidissima* Wilson ,

63 1811 also avoid ultrasonic sounds suggesting responses to odontocete echolocation clicks  
64 (Dunning *et al.*, 1992; Mann *et al.*, 1997). Pacific herring *Clupea pallasii* Valenciennes 1847  
65 display a context-dependent startle and avoidance response to simulated odontocete clicks, both  
66 in tank and free-field tests (Wilson & Dill, 2002). Gulf toadfish *Opsanus beta* Goode & Bean  
67 1880 reduce calling rates in the presence of certain marine mammal sounds (Remage-Healey *et*  
68 *al.*, 2006). However, the adaptation for marine predator detection can lead to disadvantages for  
69 fish species. Nowacek (2005) suggested that bottlenose dolphin *Tursiops truncatus* Montagu  
70 1821 may take advantage of their prey's hearing range, emitting broadband, low frequency  
71 signals called 'pops' to startle prey from seagrass beds into the water column.

72

73

74 Two species of Ammodytidae are abundant in the north-western Atlantic: *A. americanus*  
75 DeKay 1842 and *A. dubius* Reinhardt 1837. Both species range from West Greenland to as far  
76 south as North Carolina, with *A. americanus* as the slender-bodied inshore species and *A. dubius*  
77 as the deep-bodied offshore species (Robards *et al.*, 1999). Due to overlapping meristic  
78 characteristics, the two species have been considered both a consolidated population (Robards *et*  
79 *al.*, 1999) and reproductively isolated sympatric populations (Winters & Dalley, 1988).  
80 Population distribution varies seasonally, with winter as a dormant period and spring to late  
81 summer as a period of high abundance in the water column (O'Connell & Fives, 1995). During  
82 seasonal dormancy and periods of low light, *A. americanus* has a tendency to bury into the  
83 substrate, even when food is available in the water column (Winslade, 1974*a, b*). *Ammodytes*  
84 *americanus* is a visual, water-column predator, which feeds primarily on copepods and other  
85 invertebrates, and also fish larvae (Robards *et al.*, 1999). When not concealed in the substrate, *A.*

86 *americanus* shows a strong tendency to school and respond collectively to perceived threats  
87 (Pitcher & Wyche, 1983).

88

89

90 *Ammodytes* spp. serve as essential prey to over 100 consumer species, including birds,  
91 marine mammals, fishes, and invertebrates (Robards *et al.*, 1999; Willson *et al.*, 1999). They are  
92 one of the most important forage fishes in north Atlantic ecosystems because the population's  
93 overall health can be closely linked to the reproductive fitness of its seabird predators (Martin,  
94 1989; Monaghan, 1992) as well as the distribution and abundance of cetacean predators (Payne  
95 *et al.*, 1986; Weinrich *et al.*, 1997). Stimpert *et al.* (2007) recorded one of these predator species,  
96 the humpback whale *Megaptera novaeangliae* Borowski 1781, emitting broadband, low-

97 frequency, short-pulsed signals while foraging at night in Jeffreys Ledge, in an area and during a  
98 season in the Gulf of Maine in which *A. americanus* are abundant (Fiedler, 2002). *Ammodytes*  
99 *americanus*, along with the related species *A. dubius*, are large components of the *M.*

100 *novaeangliae* diet in the northwest *M. novaeangliae* Atlantic population (Kenney *et al.*, 1985).  
101 The recorded sounds, termed 'megapclicks', were associated with sharp body rolls  
102 corresponding to underwater lunge feeding that concluded with 'buzzes' of short inter-pulse  
103 intervals, similar to those emitted by odontocetes or bats immediately prior to prey capture  
104 (Griffin *et al.*, 1960; Johnson *et al.*, 2004). The authors suggested that these signals may either  
105 serve a biosonar purpose or to manipulate the movements of prey.

106

107

108           Only one audiogram exists for the family Ammodytidae: the Pacific sand lance *A.*  
109 *personatus* Girard 1856, found in the western Pacific along the Japanese coast (Suga *et al.*,  
110 2005). The study focused only on juveniles and did not address the particle velocity component  
111 of sound stimuli. The hearing abilities of adult sand lance or any Atlantic *Ammodytes* species are  
112 unknown. Hearing sensitivities have been shown to differ between cross-oceanic species, such as  
113 *C. pallasii* and Atlantic herring *C. harengus* L. 1758 (Mann *et al.*, 2005). This study investigated  
114 the hearing of *A. americanus* with the goal of determining the audiogram of a north Atlantic  
115 *Ammodytes* (sand lance) species and their potential detection of pulsed sounds similar to  
116 megapclicks. Results are provided in both sound pressure and acceleration. The implications of  
117 these data are discussed in reference to the behaviour of both predators and prey of *A.*  
118 *americanus*.

119

120

121

## MATERIALS AND METHODS

122

123

124

125

126

127

128

129

130

*Ammodytes americanus* were captured using a seine net in the sand flats of Cape Cod  
Bay (East Dennis, MA, 41°45' N, 70°07' W) from June to August 2010. *Ammodytes americanus*  
were immediately transported in aerated coolers with sand and local seawater to the Woods Hole  
Oceanographic Institution, Woods Hole, MA. There they were held in an aerated fibreglass  
holding tank (61.6 x 43.8 x 92.1 cm) filled with constantly flowing ambient seawater  $23.5 \pm 0.2^\circ$   
C and fed live *Artemia* spp. daily. The tank bottom contained a layer of sand to provide burying  
opportunities. *Ammodytes americanus* appeared to exhibit normal swimming and burrowing

131 behaviours (Robards *et al.*, 1999). Hearing was measured using auditory evoked potential (AEP)  
132 methods. The AEP technique involves measuring neurophysiological activity in response to short  
133 acoustic stimuli (Hall, 2007). The technique has been used for hearing tests in both invertebrates  
134 (Lovell *et al.*, 2005; Mooney *et al.*, 2010) and vertebrates (Jewett, 1970), including a wide range  
135 of fish species (Corwin *et al.*, 1982; Kenyon *et al.*, 1998; Yan *et al.*, 2000; Wilson *et al.*, 2009).  
136 Twenty-one *Ammodytes americanus* were examined using short tone pips to establish an AEP  
137 audiogram [10.82 cm mean total length ( $L_T$ ), S.D. 1.84 cm,  $3.24 \pm 0.40$  g mean mass]. Not every  
138 frequency was tested with every subject; respective sample sizes are listed in Table 1. Twelve  
139 animals were tested for megapclick responses [9.84 cm ( $L_T$ ), S.D. 1.41 cm,  $2.38 \pm 1.20$  g mean  
140 mass].

141

142

#### 143 EVOKED POTENTIAL RECORDINGS

144

145

146 *Ammodytes americanus* were transferred to a rectangular plastic experimental tank (49.5  
147 x 45.7 x 35.6 cm) containing gently flowing, unfiltered seawater ( $23.2 \pm 0.1^\circ$  C). To reduce the  
148 influence of outside vibrations, the plastic tank was placed in a foam-lined wooden box (58.7 x  
149 57.8 x 86.4 cm) elevated 22.3 cm above the concrete floor on cinderblocks and rubber gaskets.  
150 Each *A. americanus* was wrapped in acoustically transparent mesh fabric, held closed with  
151 plastic paper clips, and completely submerged in the water [Fig. 1(b)]. The fabric, suspended  
152 with nylon monofilament between two pieces of PVC pipe, created a tight hammock-like  
153 arrangement to keep the *A. americanus* immobile [Fig. 1(c)]. Each *A. americanus* was positioned

154 in the centre of the tank, directly above the speaker presenting the stimuli. A wooden desk next  
155 to the tank held the experimental equipment. Overall, the AEP procedures follow standard  
156 techniques used for fish evoked potentials (e.g., Corwin *et al.*, 1982; Kenyon *et al.*, 1998; Yan *et*  
157 *al.*, 2000; Wilson *et al.*, 2009) and followed approved Institute for Animal Care and Use  
158 protocols. The subjects fully recovered from these procedures, swimming and borrowing  
159 normally when returned to their holding tank.

160

161

162 Stimuli were digitally generated using custom Labview software (National Instruments,  
163 Austin, TX, <http://www.ni.com/>) implemented on a personal laptop computer (Panasonic CF-52  
164 Toughbook, Secaucus, NJ, [http://www.panasonic.com/business/toughbook/laptop-](http://www.panasonic.com/business/toughbook/laptop-computers.asp)  
165 [computers.asp](http://www.panasonic.com/business/toughbook/laptop-computers.asp)). Signal polarity was alternated by this program and sounds were then converted  
166 from digital to analog using a 6062E PCMCIA data acquisition card (National Instruments) in  
167 the laptop. This card connected to a BNC connector box (National Instruments) and then to a  
168 Hewlett-Packard 350D attenuator that controlled the sound pressure levels in 1 dB steps. Signals  
169 were relayed to a battery-powered amplifier (PLA-2210, PYLE Chopper Series, Pyle Audio,  
170 Brooklyn N.Y., <http://www.pyleaudio.com/sku/PLA2210>) and then to an underwater speaker  
171 (UW-30, Lubell Labs Inc., Columbus, OH, <http://www.lubell.com>) to play the outgoing sounds.  
172 All sounds were concurrently monitored on a digital oscilloscope (Tektronix TPS 2014,  
173 Beaverton, OR, <http://www.tek.com>).

174

175



176           The response of each *A. americanus* was recorded using the same laptop, program, and  
177 data acquisition card. A recording (non-inverting) electrode was superficially inserted above the  
178 medulla at the skull's midline [Fig. 1(a)]. A reference (inverting) electrode was inserted into the  
179 left posterior-lateral trunk musculature about 2 cm from the tip of the caudal fin. The electrodes  
180 were reusable, stainless steel, 27 Ga, 12 mm length (Rochester Electro-Medical, Inc., Lutz, FL,  
181 <http://rochestermed.com>), and were coated with Por-15 (Morristown, NJ, <http://www.por15.com>)  
182 except at the tips to reduce non-response related electrical noise. Wire connections were coated  
183 with insulating epoxy to prevent corrosion. Both electrodes and a carbon-rod ground were  
184 connected to a Grass CP-511 bio-amplifier (Astro-Med Inc., West Warwick, RI,  
185 <http://www.astro-med.com>), which amplified (10 000 fold) and filtered (10-3000 Hz) the  
186 response of the *A. americanus*. An additional copper wire grounded the stimulus amplifier. The  
187 responses were filtered again (30-3000 Hz; Krohn-Hite 3362, Brockton, MA, [http://www.krohn-](http://www.krohn-hite.com)  
188 [hite.com](http://www.krohn-hite.com)) and connected simultaneously to the oscilloscope and the laptop in order to observe the  
189 recordings in real-time. All equipment ran on battery to reduce electrical noise and was fully  
190 charged every day.

191  
192  
193           Stimuli consisted of amplitude modulated tone pips from 50–2000 Hz (50, 100, 150, 200,  
194 300, 400, 500, 1000 and 2000) and pulsed sounds of simulated megapclicks. The 50 Hz tone  
195 could drift in frequency by  $\pm 5$  Hz. The update rate for all stimuli was 16 kHz. Tone signals were  
196 at least six cycles in duration, thus signal length varied relative to frequency but was never more  
197 than 120 ms (50 Hz) and was as short as 20 ms (for stimuli  $\geq 350$  Hz). Sound presentations  
198 digitally triggered AEP recordings; thus, stimuli and evoked potential records were

199 synchronized. For an individual response record, the test tone was presented 1000 times, with  
200 1000 concurrent averaged AEP records. Measurements typically started at maximum sound  
201 pressure levels (SPLs) for each frequency (133–167 dB re. 1  $\mu$ Pa depending on the frequency).  
202 Within each frequency presentation, the SPL was decreased in 10-dB steps until the production  
203 of recognizable and repeatable AEP waveforms weakened [Fig. 2(a)]. The SPL was then  
204 decreased in 5-dB steps until the waveform disappeared. Two-to-three more measurements were  
205 made at 10 to 15 dB below this apparent ‘threshold’ in order to ensure weak responses were not  
206 overlooked. Each test began and concluded with a frequency known to produce a strong  
207 response, usually 150 Hz.

208

209

210 Stimuli were calibrated for both sound pressure and particle motion components. Sound  
211 pressure was calibrated four times during the experiment using a Reson 4014 hydrophone placed  
212 directly above the speaker in the same position as the head of the *A. americanus* ( $\pm 2$  cm). The  
213 same test stimuli presented in the tank hearing experiments were presented *via* the UW-30. The  
214 received peak-to-peak voltage ( $V_{p-p}$ ) at each location was measured on the oscilloscope and  
215 converted to peak-equivalent root-mean square voltage (peRMS) by subtracting 9 dB. Stimuli  
216 were also digitally recorded for reference to an Olympus LS-10 recorder (96 kHz sample rate)  
217 and assessed later to ensure UW-30 stimuli were the proper frequency.

218

219

220 Particle acceleration values at the position of the auditory pathway of the *A. americanus*  
221 were obtained by measuring the pressure gradient over two closely spaced sound receivers

222 (Gade, 1982). Two Brüel and Kjær 8103 hydrophones, vertically spaced 2 cm apart, were fixed  
223 directly above and below the location of the head of the *A. americanus* (3 cm depth). Thus, the  
224 hydrophones were at 2 and 4 cm depth (Fig 1(d,e)). Each hydrophone was connected to a charge  
225 amplifier (Brüel and Kjær 2635) that was connected to an analog-to-digital preamplifier  
226 (RA8GA; TDT, <http://www.tdt.com>) and a digital signal processor (RM2; TDT). As a stimulus  
227 was played, particle acceleration was computed from the pressure gradient across the two  
228 hydrophones:

229

$$230 \quad \alpha = - \Delta sig / (\rho \Delta r)$$

231

232 where  $\Delta sig$  is the magnitude of the difference between the waveforms of the two hydrophones  
233 (in Pa),  $\rho$  is the density of the medium and  $r$  is the distance between the hydrophones (Wahlberg  
234 *et al.*, 2008). The particle motion was measured in three dimensions by positioning the two  
235 hydrophones along three orthogonal axes (Kalmijn, 1988; Wahlberg *et al.*, 2008). Subsequently,  
236 particle acceleration values for the pressure-derived AEP thresholds were determined by relating  
237 the measured pressure at threshold with the corresponding particle acceleration at the head of the  
238 fish. Although a fish acts as a rigid body in the acoustic near field (Denton & Gray, 1982;  
239 Coombs *et al.*, 1992), measurements at the head were compared with additional measurements  $\pm$   
240 5 cm along the anterior–posterior axis to confirm the sound acceleration field. These  
241 measurements were similar ( $\pm 2$  dB) to those at the head.

242

243

244 Responses were also measured using the pulsed, broadband sounds of simulated  
245 megapclicks. These pulses were created using the Labview program to initiate a short-duration  
246 waveform and frequency spectrum reflective of megapclicks recorded by Stimpert *et al.* (2007).  
247 Low frequency pulses were varied by duration and centre frequency, and in-water recordings  
248 were made of each potential stimulus at the location of the *A. americanus*. The spectrum of each  
249 recorded sound was then viewed using Cool Edit software to compare the pulse spectrum and  
250 duration to that of published megapclicks. Stimpert *et al.* (2007) high-pass filtered original  
251 megapclick data at 400 Hz during analysis, eliminating the low-frequency energy in the  
252 published recordings. However, the harmonic structure (peaks at ~ 800 and 1600 Hz) suggests  
253 substantial lower frequency energy with peaks likely near 200 and 400 Hz. Because of this  
254 uncertainty of the actual megapclick spectrum, multiple pulses were examined based on their  
255 peak frequency, which suggested the prevalence of the dominant frequency. An arbitrary label  
256 of simulated megapclick 1-8 (*e.g.* MC1, MC2...) was given to each pulse. These pulses were  
257 calibrated in the manner as described above, however pulses are presented in dB peak-to-peak.  
258 Each AEP session using pulsed sounds began and concluded by collecting thresholds to 150 Hz  
259 tone pips. This was to determine baseline auditory capabilities of each *A. americanus* and to  
260 ensure that no temporary threshold shifts occurred.

261

262

263 Control experiments included recordings with naturally deceased *A. americanus*,  
264 electrodes in the water without a subject and from subjects with the recording electrode placed in  
265 the posterior muscle [Fig. 2(b)] (Ramcharitar & Popper, 2004; Ramcharitar *et al.*, 2004; Mooney  
266 *et al.*, 2010). In this case the recording electrode was inserted into the left posterior-lateral trunk

267 musculature, ~ 2 cm from the tip of the caudal fin, and the reference electrode in the left  
268 mediolateral muscle, ~ 5 cm from the tip of the caudal fin.

269

270

## 271 DATA ANALYSIS

272

273

274 Both visual determination and a custom Matlab program were used to assess the auditory  
275 threshold of each subject for each tested frequency. For the visual method, the threshold was  
276 determined as the last SPL producing a clear, repeatable waveform (Kenyon *et al.*, 1998). The  
277 Matlab program graphs the amplitude of an evoked response for its respective attenuation  
278 records against the SPL at the peaks of the fast Fourier transformed waveform. The script then  
279 performs a best-fit linear regression. The threshold was considered the point at which the  
280 regression line crosses the horizontal axis, *i.e.* the SPL at which the amplitude of the response  
281 equals 0  $\mu$ V (Nachtigall *et al.*, 2007; Mooney *et al.*, 2010). Five to 10 attenuation records were  
282 used per frequency (mean = 6.13), and the points producing the highest  $r^2$  value were used to plot  
283 the regression line (Fig. 3). Threshold values procured from all *A. americanus* were averaged to  
284 produce an audiogram for the species based on each method (Kenyon *et al.*, 1998). Megapclick  
285 detection was determined using a similar method of examining the fast Fourier transformed  
286 waveform to determine if high peak activity occurred at twice the frequency around which each  
287 megapclick was centred. The waveforms were also visually scanned for potential responses (*e.g.*  
288 Kenyon *et al.*, 1998; Mooney *et al.*, 2010). Statistical tests were performed using JMP 9.0.0. All  
289 measurements are reported as mean  $\pm$  standard error unless otherwise specified.

290

291

292

## RESULTS

293

294

### TONAL AUDIOGRAMS

296

297

298           Responses were found from 50-400 Hz. At higher amplitudes, response waveforms were  
299 clearly visible [Figs 2(a), 3]. Tone pip stimuli generated response waves that oscillated at twice  
300 the stimulus frequency, consistent with previous studies of fish evoked potentials (Fay & Popper,  
301 1974; Egner & Mann, 2005; Casper & Mann, 2007). A typical response consisted of a clear,  
302 repeatable waveform slightly delayed (10-15 ms) from the stimulus onset. Responses were clear  
303 and consistent at 350 Hz and below. Response amplitudes decreased with stimulus attenuation  
304 [Figs 2(a),3]. Only three of 10 *A. americanus* showed responses at 400 Hz and responses were  
305 not elicited at higher frequencies. No responses were found in the controls, including when  
306 electrodes were placed in the water without the *A. americanus*, in locations posterior and away  
307 from the otoliths or when electrodes were placed properly but the *A. americanus* was deceased  
308 [Fig. 2(b)]. Thresholds were at least 40 dB above the background noise present in the tank,  
309 which remained under 90 dB for all frequencies.

310

311

312           The sound pressure audiograms were somewhat irregular in shape. Thresholds were  
313 lowest at 300 Hz and increased slightly at 200 and 400 Hz. Responses were not detected above  
314 400 Hz. A substantial audiogram notch was found at 150 Hz, at which sensitivity decreased  
315 sharply in relation to other frequencies (Fig. 4). Thresholds then decreased and sensitivities  
316 improved at 100 Hz and below. While most thresholds did not vary widely among individuals,  
317 some frequencies showed greater variation. This seemed partially, but not always, due to  
318 differences in the number of samples per frequency (Table I). For example, 200 Hz had the  
319 greatest S.D. values despite a relatively high ( $n=18$ ) sample size. While the sound pressure  
320 audiogram shape did not differ substantially between the visual method and the FFT methods,  
321 visual thresholds were elevated about 20-30 dB (Fig. 4).

322

323

324           In contrast to the audiogram of *A. personatus* obtained by Suga *et al.* (2005), the  
325 audiogram of *A. americanus* showed no responses at 500 Hz. Sensitivities of *A. americanus* were  
326 within the same general range as those of *A. personatus*, although the audiogram of *A.*  
327 *personatus* did not display an audiogram notch. Visual thresholds for *A. americanus* were  
328 elevated relative to *A. personatus*, but *A. americanus* generated FFT thresholds that were below  
329 those of *A. personatus*.

330

331

332           Particle velocity sensitivities were lowest at 200 Hz (Fig. 5). While 400 Hz was the  
333 highest overall threshold, there were not always substantial differences between the frequencies.  
334 The visual thresholds showed a general trend of improved sensitivity from high to lower

335 frequencies. This trend was not apparent in the FFT measurements. For example, while the  
336 highest FFT thresholds were at 400 Hz, they were only significantly greater than thresholds at  
337 200 and 300 Hz (one-way ANOVA,  $F_{7,93}=19.12$ ,  $P \leq 0.001$ ; subsequent Tukey's pairwise  
338 comparison). FFT thresholds at 50 Hz were only significantly different from 200 Hz. Thus, the  
339 FFT-determined particle velocity thresholds were essentially flat.

340

341

## 342 PULSED STIMULI

343

344

345 Responses were generated using pulsed sounds that contained high spectral energy from  
346 75 to 350 Hz and peak frequencies at or below 178 Hz [Table II; Fig. 6(a)]. Evoked potential  
347 waveforms were similar to those for tone pips, consisting of a repeatable sinusoid-like  
348 waveform. This was likely due to a ringing of the speaker, which is expected with impulse  
349 sounds. Response delays were detectable but less than those of the tonal stimuli ( $\sim 5$  ms).  
350 Response amplitudes decreased correspondingly with SPL attenuation. Again, controls  
351 (deceased *A. americanus*, no *A. americanus* and electrodes in the posterior musculature) did not  
352 generate responses. At very high SPLs ( $> 160$  dB), the short-duration stimulus waveform was  
353 visible in the AEP record, potentially masking the first few ms of recording. Also notably, while  
354 responses were consistently generated using pulses with lower frequency peaks, these responses  
355 were not generated in every *A. americanus*. There appeared to be some variation with these brief  
356 signals and successful AEP recordings compared to the longer duration tonal stimuli.

357



358

359 *Ammodytes americanus* did not respond to pulses containing peak energy above 178 Hz  
360 [Fig. 6(b)]. Unfortunately, the irregularities and inefficiencies of the UW-30 made it difficult to  
361 produce pulsed stimuli with peak energy between about 200-700 Hz.

362

363

364

## DISCUSSION

365

366

367 At regions of best sensitivity, 50-350 Hz, responses were clear and easily distinguishable  
368 from the background noise. All responses showed a standard physiological time delay before  
369 they were observed. This delay was shorter for the pulsed sounds likely because their onset was  
370 rapid (*e.g.* Wysocki & Ladich, 2002). Tone pip stimuli were ramped up to reduce frequency  
371 spreading but this increased the latency until a response was observable, likely due to an  
372 increased time until sufficient stimulus amplitudes were received by the *A. americanus*. Thus,  
373 lower frequencies, with longer ramp-up times (due to larger wavelengths), had slightly longer  
374 physiological delays (Wysocki & Ladich, 2001). The AEP waveforms measured also had  
375 significant energy at twice the stimulus frequency, making them easily identifiable using FFTs  
376 (Casper & Mann, 2007). This suggests that otolith hair cells of *A. americanus* are arranged in  
377 opposite directions and are alternately stimulated *via* the sound stimuli (Fay & Edds-Walton,  
378 1997). Finally, and as expected, responses decreased with stimulus level [Figs 2(a),3] and  
379 comparatively, no responses were generated during various control experiments. These *A.*  
380 *americanus* tone-generated AEP characteristics of a delayed response, decreases with stimulus

381 level and doubling for frequency general were similar to other fishes (*e.g.* Kenyon *et al.*, 1998;  
382 Egner & Mann, 2005) and some invertebrates (Mooney *et al.*, 2010). Overall, thresholds levels  
383 shown here are also similar to those in other studies of fishes without auditory specializations  
384 (Wysocki *et al.*, 2009; Anderson & Mann, 2011) showing *A. americanus* are not hypersensitive,  
385 nor insensitive, to sound. Pulsed stimuli with significant low frequency energy generated  
386 responses that were much shorter in delay but overall still exemplified the doubling-of-frequency  
387 following response [Fig. 6(a)]. These reflected novel fish AEP responses to a predator-like  
388 sound.

389

390

391         The shape of the audiograms differed when plotted in sound pressure and particle  
392 velocity. The sound pressure thresholds of *A. americanus* were irregular, with peaks and valleys  
393 and displayed greatest sensitivity from 300 Hz to 400 Hz. Acceleration thresholds were lowest at  
394 200 Hz. Even excluding this 200 Hz point, the acceleration thresholds slightly improved in  
395 sensitivity as frequency decreased. Thresholds plotted in sound pressure were much more  
396 uneven in shape. These shape differences are a little surprising because in many instances, fish  
397 sound pressure and particle velocity hearing curves have similar curves (Horodysky *et al.*, 2008;  
398 Wysocki *et al.*, 2009). Yet, this is not always the case (Anderson & Mann, 2011). The  
399 differences between the two audiograms' shapes seen here and elsewhere may be partially due to  
400 the complex interaction of acoustic stimuli in small experimental tanks. While free-field  
401 calculations between sound pressure and particle motion are a direct theoretical relationship, this  
402 is not true in a small tank with reflections and reverberation. Thus, sound pressure and  
403 acceleration may not follow the same trends in certain situations.

404  
405  
406  
407  
408  
409  
410  
411  
412  
413  
414  
415  
416  
417  
418  
419  
420  
421  
422  
423  
424  
425  
426

Particle velocities are often the relevant stimuli for many fishes, but fish hearing with respect to pressure and acceleration is now seen as a continuum between species (Popper & Fay, 2011). Unfortunately, it can be difficult to predict the details of audiograms and it is suggested that morphological variations do not always coincide with hearing estimations (Wysocki *et al.*, 2009; Anderson & Mann, 2011). The sensory mechanism of fishes (Popper & Fay, 2011) and the differences between pressure and acceleration audiograms, as seen here, support substantial consideration of acceleration values, not simply sound pressure (Suga *et al.*, 2005). Conversion metrics and laboratory settings used here provide an estimate of natural setting data. *In situ* acceleration measurement devices are now more readily available (McConnell, 2003; Wysocki *et al.*, 2009) and increase the scope of potential understandings of fish pressure and particle motion detection. Additional tests using isolated pressure and particle motion stimuli (Packard *et al.*, 1990; Mooney *et al.*, 2010) will improve understanding of the relative importance of particular stimuli. Notably, in these experiments *A. americanus* essentially rested directly above the speaker and responses were likely dominated by the acceleration component of the sound wave (Kalmijn, 1988). Both the ear and lateral line may have been highly stimulated (Coombs *et al.*, 1992; Wilson *et al.*, 2009). Given that the AEP is a whole brain response, responses were potentially recorded from both auditory and lateral line inputs. The relative contributions of these two systems may have also influenced the acceleration (but not the pressure) audiogram shape, reflecting in differences between the two stimulus types.

427           The range and shape of the acceleration audiogram reflect hearing abilities of some other  
428 fishes (Casper & Mann, 2006; Horodysky *et al.*, 2008; Wysocki *et al.*, 2009; Belanger *et al.*,  
429 2010; Anderson & Mann, 2011). Acceleration audiograms typically have a flattened ‘J’ shape,  
430 with most sensitive thresholds at lower frequencies (often below 200 Hz) and thresholds  
431 substantially increasing at higher frequencies (*e.g.* Karlsen, 1992). This is quite different than  
432 the ‘U’ shape of sound pressure mammalian curves (*e.g.* Johnson, 1967). The acceleration  
433 thresholds here somewhat reflect the ‘J’ shape, but only start the expected increase at the upper  
434 limit of hearing, perhaps suggesting that these results were near, but not reaching the true hearing  
435 limit of *A. americanus*. Fish thresholds are most sensitive at lower frequencies in the optimal  
436 range of otolith hair cells and as frequencies increase, hair cell response efficiency can decrease  
437 (Sand *et al.*, 2001). This appears to limit the frequency range of responses (Sand & Karlsen,  
438 2000) and consequently many particle motion audiograms are limited to low frequencies  
439 (Karlsen, 1992; Casper & Mann, 2006; these data). Particle velocity also appears to be the most  
440 relevant stimulus for fish without swim bladders (Enger & Andersen, 1967; Chapman & Sand,  
441 1974). The lack of a swim bladder (Robards *et al.*, 1999) and the presence of dense otolith  
442 structures suggest that *A. americanus* are without auditory specializations (Popper & Fay, 2011),  
443 and particle velocity is the likely acoustic stimulus. This further suggests that acceleration  
444 thresholds, which are increasingly becoming standard in current studies (see references above),  
445 are experimentally necessary because they are biologically relevant to these and other fishes.

446

447

448           Relatively few responses were generated at 350 Hz and 400 Hz. The starting stimulus  
449 levels at these frequencies were limited by the transmission response curve of the underwater

450 speaker. It is likely that the starting sound levels at 350 Hz and 400 Hz were not sufficiently high  
451 to induce reliable responses. Further, at least four reliable response records were required for the  
452 FFT threshold determinations. These were difficult to obtain if stimuli started near threshold. In  
453 any case, comparing these data to Suga *et al.*'s work (2005) and audiograms of similar fishes  
454 without gas bladders or auditory specializations (Karlsen, 1992; Sand & Karlsen, 2000; Sand *et*  
455 *al.*, 2001; Wysocki *et al.*, 2009; Popper & Fay, 2011), similar results are found – that 400 Hz is  
456 probably close to the upper limit of *A. americanus* hearing range. Predominant sources of ocean  
457 sounds are also in this low frequency range (Urlick, 1983; Au & Hastings, 2009). In these  
458 respects, the 'auditory scene' (Bregman, 1990) of *A. americanus* is likely in the frequencies  
459 measured and thus these data provide sensitivities in the primary sensory range of *A. americanus*.

460  
461  
462 *Ammodytes americanus* and *A. personatus* had somewhat different thresholds, although  
463 frequency response ranges were similar (Suga *et al.*, 2005). The lack of responses at 500 Hz in  
464 this study may be a result of the 140 dB starting SPL, which is very close to the threshold  
465 observed in *A. personatus* by Suga *et al.* (2005) at 512 Hz (~ 133 dB). Levels of 140 dB are  
466 significantly above threshold for many, but not all fishes without hearing specializations  
467 (Wysocki *et al.*, 2009; Belanger *et al.*, 2010). The differences could be an artefact of the maturity  
468 of *A. americanus* compared to the juveniles used in Suga *et al.* (2005), although threshold  
469 differences were not detected across this study's size spectrum or in similar studies (Belanger *et*  
470 *al.*, 2010). Population, and thus genetic or subtle morphological differences, have also been  
471 suggested to impact thresholds (Ladich & Wysocki, 2009; Wysocki *et al.*, 2009). The observed  
472 differences may also be a remnant of different methods used. Suga *et al.* (2005) placed the

473 speaker out of the water and kept the heads of *A. personatus* at the water surface. While animal  
474 placement and speaker alone may not impact the sound pressure thresholds of otophysans  
475 (Ladich & Wysocki, 2009), calibration errors, among other possibilities, may impact threshold  
476 levels (Ladich & Wysocki, 2009). Sound measurements are particularly difficult at the air-water  
477 boundary due to reflective and refractive effects (Urlick, 1983; Au & Hastings, 2009). Thus  
478 placing the animal at the surface may lead to unquantified particle velocities to which *A.*  
479 *personatus* actually responded.

480

481

482         The absence of low frequency energy in field-recorded megapclicks is an important  
483 factor to consider in interpreting responses to pulses and simulated megapclicks. The methods  
484 used by Stimpert *et al.* (2007) involved applying a high-pass filter to the acoustic tag recordings  
485 that effectively removed the majority of energy below 400 Hz. Although used as an analysis  
486 method to reduce water-flow noise on the recordings, this most likely removed the low-  
487 frequency energy that falls within the auditory range of *A. americanus*. Recorded megapclicks  
488 had a source level at the tag on the animal's back of  $143 \pm 5$  dB and  $154 \pm 5$  dB re 1  $\mu$ Pa pp.  
489 These levels are probably higher in front of the *A. americanus* and are also above *A. americanus*  
490 hearing thresholds for all tested frequencies. Unfortunately, only sound pressure values are  
491 available for the megapclicks. As noted above, acceleration is likely to be the primary stimulus for  
492 *A. americanus*. However, given that both pressure and particle motion are generated with all  
493 sounds (Urlick, 1983; Kalmijn, 1988), these megapclicks probably have significant particle  
494 motion components that would be available to *A. americanus*. By modelling the available  
495 pressure stimuli and calibrating both components, this study assumed that natural megapclicks

496 would have similar acceleration components to which *A. americanus* may respond. The results  
497 also show pulses with a variety of low frequency spectra can generate responses. Detection  
498 ranges are not predicted without the actual source levels. Based on the published source levels  
499 and assuming similar energy below 400 Hz, it seems likely that megapclicks are detectable by *A.*  
500 *americanus*.

501

502

503 A prey's ability to hear approaching predators is not a new strategy for predator  
504 avoidance, and predator detection is considered one of the primary drivers of hearing evolution  
505 (Gans, 1992; Fay & Popper, 2000). *Ammodytes* spp. often show a tightly compacted schooling  
506 response when a threat is perceived (Girsa & Danilov, 1976; Pitcher & Wyche, 1983). This  
507 'selfish herd' response (Hamilton, 1971) may reduce fish and bird predation for many  
508 individuals. Fishes constitute the majority of *Ammodytes* spp. predators and much of their  
509 avoidance behaviour is considered to be adapted to reduce fish predation (Girsa & Danilov,  
510 1976; Willson *et al.*, 1999). For *M. novaeangliae*, this behaviour may result in a higher density  
511 prey patch. The acoustic signals produced by *M. novaeangliae* may serve to exploit *A.*  
512 *americanus* behavioural responses and manipulate the fish into a denser school. Similar  
513 *Ammodytes* spp. 'balling up' has been observed as a reaction to nets (Girsa & Danilov, 1976).  
514 Perhaps less likely, the sounds could serve to startle *A. americanus* out of the substrate (*e.g.*  
515 Nowacek, 2005). Behavioural tests with *A. americanus* in the water column would help evaluate  
516 this hypothesis. *A. americanus* might also use this sensory modality to navigate or to 'eavesdrop'  
517 on sounds produced by predators (Fay & Popper, 2000). The acoustic detection of predators may

518 also facilitate prey escape, whether or not the detected sounds correlate with predators' foraging  
519 strategies.

520

521

522         The results of this study demonstrate that *A. americanus* detect low frequency sound and  
523 potentially the low frequency components of megapclicks. Particle velocity is likely to be the  
524 stimulus for *A. americanus*. Their hearing range encompasses the frequencies of many potential  
525 predators, including cetaceans and soniferous fishes but also many more general ambient sounds  
526 such as reef, rain, wave and anthropogenic noise (Urick 1983; Robards *et al.*, 1999). The  
527 functional uses of sound in the species, as well as their behavioural reactions and directional  
528 responses to sound have yet to be determined.

529

530

531

### ACKNOWLEDGEMENTS

532

533

534 We thank A. Schroth, M. Yamato, D. Ketten, D. Ponce, and A. Scharr, who assisted with *A.*  
535 *americanus* capture and portions of the experiment. Facilities were graciously shared by S.  
536 Gallagher, and J. Gould provided guidance during analysis and write-up. Woods Hole  
537 Oceanographic Institution IACUC approved the animal-use protocol used throughout this study  
538 (project number DRK #3). This project was completed in fulfilment of the Bachelor of Arts  
539 degree for S.M.S. at Princeton University. We also thank the Mountlake Research Fund, the  
540 Provost's Fund for Senior Thesis Research and the Horton Elmer Fund, all of which provided the



541 support for this study through Princeton University. A. Mooney was supported through a Woods  
542 Hole Postdoctoral Scholar award and the Andrew W. Mellon Fund for Innovative Research.

543

544

## 545 REFERENCES

546

547

548 Anderson, P.A. & Mann, D.A. (2011). Evoked potential audiogram of the lined seahorse,

549 *Hippocampus erectus* (Perry), in terms of sound pressure and particle acceleration.

550 *Environmental Biology of Fishes* **91**, 251-259. doi: 10.1007/s10641-011-9772-8

551 Au, W.W.L. & Hastings, M.C. (2009). *Principles of marine bioacoustics*. New York: Springer.

552 Belanger, A.J., Bobeica, I. & Higgs, D.M. (2010). The effect of stimulus type and background

553 noise on hearing abilities of the round goby *Neogobius melanostomus*. *Journal of Fish*

554 *Biology* **77**, 1488-1504. doi: 10.1111/j.1095-8649.2010.02773.x

555 Bregman, A. (1990). *Auditory Scene Analysis: The Perceptual Organization of Sound*.

556 Cambridge, MA: MIT Press.

557 Casper, B.M. & Mann, D.A. (2006). Evoked potential audiograms of the nurse shark

558 (*Ginglystoma cirratum*) and the yellow stingray (*Urobatis jamaicensis*). *Environmental*

559 *Biology of Fishes* **76**, 101-108. doi: 10.1007/s10641-006-9012-9

560 Casper, B.M. & Mann, D.A. (2007). Dipole hearing measurements in elasmobranch fishes.

561 *Journal of Experimental Biology* **210**, 75-81. doi: 10.1242/jeb.02617

562 Chapman, C.J. & Sand, O. (1974). Field studies of hearing in two species of flatfish

563 *Pleuronectes platessa* (L.) and *Limanda limanda* (L.) (Family Plueronectidae).

- 564 *Comparative Biochemistry and Physiology* **47A**, 371-385. doi: 10.1016/0300-  
565 9629(74)90082-6
- 566 Coombs, S., Janssen, J. & Montgomery, J. (1992). Functional and evolutionary implications of  
567 peripheral diversity in lateral line systems. In *The Evolutionary Biology of Hearing*  
568 (Webster, D. B., Fay, R. J. & Popper, A. N., eds), pp. 267-294. New York: Springer-  
569 Verlag.
- 570 Corwin, J.T., Bullock, T.H. & Schweitzer, J. (1982). The auditory brain stem response in five  
571 vertebrate classes. *Electroencephalography and Clinical Neurophysiology* **54**, 629-641.  
572 doi: 10.1016/0013-4694(82)90117-1
- 573 Denton, E.J. & Gray, J.A.B. (1982). The rigidity of fish and patterns of lateral line stimulation.  
574 *Nature* **297**, 679 - 681. doi:10.1038/297679a0
- 575 Dunning, D.J., Rossa, Q.E., Geoghegan, P., Reichle, J.J., Menezes, J.K. & Watson, J.K. (1992).  
576 Alewives avoid high-frequency sound. *North American Journal of Fisheries Management*  
577 **12**, 407-416.
- 578 Egner, S.A. & Mann, D.A. (2005). Auditory sensitivity of sergeant major damselfish *Abudefduf*  
579 *saxatilis* from post-settlement juvenile to adult. *Marine Ecology Progress Series* **285**, 213-  
580 222. doi:10.3354/meps285213
- 581 Enger, P.S. & Andersen, R. (1967). An electrophysiological field study of hearing in fish.  
582 *Comparative Biochemistry and Physiology* **22**, 527-538. doi: 10.1016/0010-  
583 406X(67)90614-7
- 584 Fay, R.R. (1969). Behavioral audiogram of the goldfish. *Journal of Auditory Research* **9**, 112-  
585 121. doi: 10.1121/1.3588125

- 586 Fay, R.R. (1992). Structure and function in sound discrimination among vertebrates. In *The*  
587 *Evolutionary Biology of Hearing* (Fay, R. R. & Popper, A. N., eds), pp. 229-263. New  
588 York: Springer-Verlag.
- 589 Fay, R.R. & Edds-Walton, P.L. (1997). Directional response properties of saccular afferents of  
590 the toadfish, *Opsanus tau*. *Hearing Research* **111**, 1-21. doi: 10.1016/S0378-  
591 5955(97)00083-X
- 592 Fay, R.R. & Popper, A.N. (1974). Acoustic stimulation of the ear of the goldfish (*Carassius*  
593 *auratus*). *Journal of Experimental Biology* **61**, 243–260. pmid:4411820
- 594 Fay, R.R. & Popper, A.N. (2000). Evolution of hearing in vertebrates: the inner ears and  
595 processing. *Hearing Research* **149**, 1-10. doi:10.1016/S0378-5955(00)00168-4
- 596 Fiedler, P.C. (2002). Ocean environment. In *Encyclopedia of Marine Mammals*, (Perrin, W.F.,  
597 Würsig, B. & Thewissen, J.G.M., eds), pp. 824-833. San Diego: Academic Press.
- 598 Gade, S. (1982). Sound intensity (Part 1. Theory). *Brüel and Kjær Technical Review* **3**, 3-39.
- 599 Gans, C. (1992). An overview of the evolutionary biology of hearing. In *Evolutionary Biology of*  
600 *Hearing* (Webster, D.B., Fay, R.R. & Popper, A.N., eds), pp. 3-13. New York: Springer-  
601 Verlag.
- 602 Girsá, I.I. & Danilov, A.N. (1976). The defensive behavior of the White Sea sand lance  
603 *Ammodytes hexapterus*. *Journal of Ichthyology* **16**, 862-865.
- 604 Griffin, D.R., Webster, F.A. & Michael, C.R. (1960). The echolocation of flying insects by bats.  
605 *Animal Behaviour* **8**, 141-154. doi:10.1016/0003-3472(60)90022-1
- 606 Hall, J.W. (2007). *The New Handbook of Auditory Evoked Potentials*. Boston: Pearson  
607 Education.

- 608 Hamilton, W.D. (1971). Geometry for the selfish herd. *Journal of Theoretical Biology* **31**, 295-  
609 311. doi: 10.1016/0022-5193(71)90189-5
- 610 Horodysky, A.Z., Brill, R.W., Fine, M.L., Musick, J.A. & Latour, R.J. (2008). Acoustic pressure  
611 and particle motion thresholds in six sciaenid fishes. *Journal of Experimental Biology* **211**,  
612 1504-1511. doi: 10.1242/jeb.016196
- 613 Jewett, D.L. (1970). Volume-conducted potentials in response to auditory stimuli as detected by  
614 averaging in the cat. *Electroencephalography and Clinical Neurophysiology* **28**, 609-  
615 618. doi:10.1016/0013-4694(70)90203-8
- 616 Johnson, C.S. (1967). Sound detection thresholds in marine mammals. In *Marine Bioacoustics*  
617 (Tavolga, W.N., ed.), pp. 247-260. New York: Pergamon Press.
- 618 Johnson, M., Madsen, P.T., Zimmer, W.M.X., Aguilar deSoto, N. & Tyack, P.T. (2004). Beaked  
619 whales echolocate on prey. *Proceedings of the Royal Society B: Biological Sciences*  
620 **271**(Suppl.), S383-S386. doi:10.1098/rsbl.2004.0208
- 621 Kalmijn, A.D. (1988). Acoustic and hydrodynamic field detection. In *Sensory Biology of Aquatic*  
622 *Animals* (Atema, J., Fay, R.R., Popper, A.N. & Tavolga, W.N., eds), pp. 83-131. New  
623 York: Springer-Verlag.
- 624 Karlsen, H. E. (1992). Infrasound sensitivity in the plaice (*Pleuronectes platessa*). *Journal of*  
625 *Experimental Biology* **171**, 173-187.
- 626 Kenyon, T.N., Ladich, F. & Yan, H.Y. (1998). A comparative study of hearing in fishes: the  
627 auditory brainstem response approach. *Journal of Comparative Physiology A* **182**, 307-  
628 318. doi:10.1007/s003590050181

- 629 Knudsen, F.R., Enger, P.S. & Sand, O. (1992). Awareness reactions and avoidance responses to  
630 sound in juvenile Atlantic salmon, *Salmo salar* L. *Journal of Fish Biology* **40**, 523-534.  
631 doi: 10.1111/j.1095-8649.1992.tb02602.x
- 632 Ladich, F. & Wysocki, L.E. (2009). Does speaker presentation affect auditory evoked potential  
633 thresholds in goldfish? *Comparative Biochemistry and Physiology, Part A* **154**, 341–346.  
634 doi: 10.1016/j.cbpa.2009.07.004
- 635 Lobel, P.S. (1992). Sounds produced by spawning fish. *Environmental Biology of Fishes* **33**,  
636 351-358. doi:10.1007/BF00010947
- 637 Lovell, J.M., Findlay, M.M., Moate, R.M. & Yan, H.Y. (2005). The hearing abilities of the  
638 prawn *Palaemon serratus*. *Comparative Biochemistry and Physiology, A* **140**, 89-100.  
639 doi:10.1016/j.cbpa.2005.11.015
- 640 Mann, D.A. & Lobel, P.S. (1998). Acoustic behavior of the damselfish *Dascyllus albisella*:  
641 behavioral and geographic variation. *Environmental Biology of Fishes* **51**, 421-428(428).  
642 doi:10.1023/A:1007410429942
- 643 Mann, D.A., Lu, Z. & Popper, A.N. (1997). A clupeid fish can detect ultrasound. *Nature* **389**,  
644 341. doi: 10.1038/38636
- 645 Mann, D.A., Popper, A.N. & Wilson, B. (2005). Pacific herring hearing does not include  
646 ultrasound. *Biology Letters* **1**, 158-161. doi:10.1098/rsbl.2004.0241
- 647 Martin, A.R. (1989). The diet of Atlantic Puffin *Fratercula arctica* and Northern Gannet *Sula*  
648 *bassana* chicks at a Shetland colony during a period of changing prey availability. *Bird*  
649 *Study* **36**, 170-180. doi:10.1080/00063658909477022
- 650 McConnell, J.A. (2003). Analysis of a compliantly suspended acoustic velocity sensor. *Journal*  
651 *of the Acoustical Society of America* **113**, 1395-1405. doi: 10.1121/1.1542646

- 652 Monaghan, P. (1992). Seabirds and sandeels: The conflict between exploitation and conservation  
653 in the northern North Sea. *Biodiversity and Conservation* **1**, 98-111.  
654 doi:10.1007/BF00731037
- 655 Mooney, T.A., Hanlon, R.T., Christensen-Dalsgaard, J., Madsen, P.T., Ketten, D.R. &  
656 Nachtigall, P.E. (2010). Sound detection by the longfin squid (*Loligo pealeii*) studied with  
657 auditory evoked potentials: Sensitivity to low-frequency particle motion and not pressure.  
658 *Journal of Experimental Biology* **213**, 3748-3759. doi:10.1242/jeb.048348
- 659 Myrberg, A.A. (1986). Sound producing by males of a coral reef fish (*Pomacentrus partitus*): its  
660 significance to females. *Animal Behaviour* **34**, 913-923. doi:10.1016/S0003-  
661 3472(86)80077-X
- 662 Myrberg, A.A., Jr. (1997). Sound production by a coral reef fish (*Pomacentrus partitus*):  
663 Evidence for a vocal, territorial "keep-out" signal. *Bulletin of Marine Science* **60**, 1017-  
664 1025. issn:0007-4977
- 665 Nachtigall, P.E., Mooney, T.A., Taylor, K.A. & Yuen, M.M.L. (2007). Hearing and auditory  
666 evoked potential methods applied to odontocete cetaceans. *Aquatic Mammals* **33**, 6-13.  
667 doi:10.1578/AM.33.1.2007.6
- 668 Nelson, D.R. & Gruber, S.H. (1963). Sharks: attraction by low-frequency sound. *Science* **142**,  
669 975-977. doi: 10.1126/science.142.3594.975
- 670 Nowacek, D.P. (2005). Acoustic ecology of foraging bottlenose dolphins (*Tursiops truncatus*),  
671 habitat-specific use of three sound types. *Marine Mammal Science* **21**, 587-602.  
672 doi:10.1111/j.1748-7692.2005.tb01253.x

- 673 O'Connell, M. & Fives, J.M. (1995). The biology of the lesser sand-eel *Ammodytes tobianus* in  
674 the Galway bay area. *Biology and Environment: Proceedings of the Royal Irish Academy*.  
675 **95B**, 87-98. <http://www.jstor.org/stable/20504502>
- 676 Packard, A., Karlsen, H.E. & Sand, O. (1990). Low frequency hearing in cephalopods. *Journal*  
677 *of Comparative Physiology A* **166**, 501-505. doi: 10.1007/BF00192020
- 678 Payne, P.M., Nicolas, J.R., O'Brien, L. & Powers, K.D. (1986). The distribution of the  
679 humpback whale, *Megaptera novaeangliae*, on Georges Bank and in the Gulf of Maine,  
680 USA in relation to densities of the sand eel, *Ammodytes americanus*. *Fishery Bulletin* **84**,  
681 271-277.
- 682 Pitcher, T.J. & Wyche, C.J. (1983). Predator-avoidance behaviours of sand-eel schools: why  
683 schools seldom split. In *Predators and Prey in Fishes* (Noakes, D.L.G., Lindquist, D.G.,  
684 Helfman, G.S. & Ward, J.A., eds.), pp. 193-204. Boston: Dr W. Junk Publishers.
- 685 Popper, A. N. & Fay, R. R. (2011). Rethinking sound detection by fishes. *Hearing Research* **273**,  
686 25-36. doi: 10.1016/y.heares.2009.12.23
- 687 Ramcharitar, J. & Popper, A.N. (2004). Masked auditory thresholds in sciaenid fishes: A  
688 comparative study. *Journal of the Acoustical Society of America* **116**, 1687–1691. doi:  
689 10.1121/1.1771614
- 690 Ramcharitar, J.U., Deng, X., Ketten, D. & Popper, A.N. (2004). Form and function in the unique  
691 inner ear of a teleost: The silver perch (*Bairdiella chrysoura*). *Journal of Comparative*  
692 *Neurology* **475**, 531-539. doi: 10.1002/cne.20192
- 693 Ramage-Healey, L., Nowacek, D.P. & Bass, A.H. (2006). Dolphin foraging sounds suppress  
694 calling and elevate stress hormone levels in a prey species, the Gulf toadfish. *Journal of*  
695 *Experimental Biology* **209**, 4444-4451. doi:10.1242/jeb.02525

- 696 Sand, O., Enger, P.S., Karlsen, H.E. & Knudsen, F.R. (2001). Detection of infrasound in fish and  
697 behavioral responses to intense infrasound in juvenile salmonids and european silver eels:  
698 a minireview. *American Fisheries Society Symposium* **26**, 183-193. issn:08922284
- 699 Sand, O. & Karlsen, H.E. (2000). Detection of infrasound and linear acceleration in fishes.  
700 *Philosophical Transactions of the Royal Society of London, B: Biological Sciences* **355**,  
701 1295-1298. doi:10.1098/rstb.2000.0687
- 702 Stimpert, A.K., Wiley, D.N., Au, W.W., Johnson, M.P. & Arsenault, R. (2007). 'Megapclicks':  
703 Acoustic click trains and buzzes produced during night-time foraging of humpback whales  
704 (*Megaptera novaeangliae*). *Biology Letters* **3**, 467-70. doi: 10.1098/rsbl.2007.0281
- 705 Suga, T., Akamatsu, T., Sawada, K., Hashimoto, H., Kawabe, R., Hiraishi, T. & Yamamoto, K.  
706 (2005). Audiogram measurement based on the auditory brainstem response for juvenile  
707 Japanese sand lance *Ammodytes personatus*. *Fisheries Science* **71**, 287-292.  
708 doi:10.1111/j.1444-2906.2005.00962.x
- 709 Urick, R.J. (1983). *Principles of Underwater Sound*. New York: Mc-Graw-Hill.
- 710 Webster, D.B., Fay, R.R. & Popper, A.N., eds (1992). *The Evolutionary Biology of Hearing*.  
711 New York: Springer-Verlag.
- 712 Wahlberg, M., Schack, H., Wilson, M., Bejder, L. & Madsen, P.T. (2008). Particle acceleration  
713 noise generated by boats. *Bioacoustics* **17**, 148-150. doi: 10.1080/09524622.2008.9753797
- 714 Weinrich, M.T., Shilling, M., Griffiths, R., Bove, J. & Schilling, M. (1997). A shift in  
715 distribution of humpback whales, *Megaptera novaeangliae*, in response to prey in the  
716 southern Gulf of Maine. *Fishery Bulletin* (Wash D.C.) **95**, 826-836.



- 717 Wilson, B. & Dill, L. (2002). Pacific herring respond to simulated odontocete echolocation  
718 sounds. *Canadian Journal of Fisheries and Aquatic Science* **59**, 542-553. doi:10.1139/f02-  
719 029
- 720 Wilson, M., Montie, E., Mann, K.A. & Mann, D.A. (2009). Ultrasound detection in the Gulf  
721 menhaden requires gas-filled bullae and an intact lateral line. *Journal of Experimental*  
722 *Biology* **212**, 3422-3427. doi:10.1242/jeb.033340
- 723 Winslade, P. (1974a). Behavioural studies on the lesser sandeel, *Ammodytes marinus* (Raitt) I.  
724 The effect of food availability on activity and the role of olfaction in food detection.  
725 *Journal of Fish Biology*. **6**, 565-576. doi:10.1111/j.1095-8649.1974.tb05100.x
- 726 Winslade, P. (1974b). Behavioural studies on the lesser sandeel, *Ammodytes marinus* (Raitt) II.  
727 The effect of light intensity on activity. *Journal of Fish Biology*. **6**, 577-  
728 586. doi:10.1111/j.1095-8649.1974.tb05101.x
- 729 Winters, G.H. & Dalley, E.L. (1988). Meristic composition of sand lance (*Ammodytes* spp.) in  
730 Newfoundland waters with a review of species designations in the northwest Atlantic.  
731 *Canadian Journal of Fisheries and Aquatic Sciences* **45**, 516-529. doi:10.1139/f88-061
- 732 Wysocki, L.E., Codarin, A., Ladich, F. & Picciulin, M. (2009). Sound pressure and particle  
733 acceleration audiographs in three marine fish species from the Adriatic Sea. *Journal of the*  
734 *Acoustical Society of America* **126**, 2100-2107. doi: 10.1121/1.3203562
- 735 Wysocki, L.E. & Ladich, F. (2001). The ontogenetic development of auditory sensitivity,  
736 vocalization and acoustic communication in the labyrinth fish *Trichopsis vittata*. *Journal of*  
737 *Comparative Physiology, A* **187**, 177-187. doi: 10.1007/s003590100186

- 738 Wysocki, L.E. & Ladich, F. (2002). Can fishes resolve temporal characteristics of sounds? New  
739 insights using auditory brainstem responses. *Hearing Research* **169**, 36-46. doi:  
740 10.1016/S0378-5955(02)00336-2
- 741 Yan, H.Y., Fine, M.L., Horn, N.S. & Colon, W.E. (2000). Variability in the role of the  
742 gasbladder in fish audition. *Journal of Comparative Physiology A* **186**, 435-445. doi:  
743 10.1007/s003590050443
- 744

**ELECTRONIC REFERENCES**

745  
746  
747  
748  
749  
750  
751  
752  
753  
754  
755  
756  
757  
758  
759  
760  
761  
762  
763  
764

Kenney, R.D., Hyman, M.A.M. & Winn, H.E. (1985). Calculation of standing stocks and energetic requirements of the cetaceans of the northeast United States outer continental shelf. Washington D.C.: NOAA Technical Memorandum NMFS-F/NEC-41:99, U.S. Department of Commerce. Available at:  
[http://www.st.nmfs.noaa.gov/tm/nec\\_image/nec041image.pdf](http://www.st.nmfs.noaa.gov/tm/nec_image/nec041image.pdf)

Robards, M. D., Willson, M.F., Armstrong, R.H. & Piatt, J.F. (1999). Sand lance: A review of biology and predator relations and annotated bibliography. *USDA Forest Service - Research Papers RMRS (PNW-RP-521)*, 1-327. Available at:  
<http://www.treesearch.fs.fed.us/pubs/2934>

Willson, M.F., Armstrong, R.H., Robards, M.D. & Piatt, J.F. (1999). Sand lance as cornerstone prey for predator populations. *USDA Forest Service - Research Papers RMRS(PNW-RP-521)*, 17-44. Available at: <http://www.treesearch.fs.fed.us/pubs/2934>

589 Table I. Thresholds (dB re 1 uPa and dB re m s<sup>2</sup>), standard deviations, and sample sizes  
 590 for the tone-pip stimuli.

591

| Freq (Hz) | SPL   |      |        |      | Acceleration |      |        |      | <i>n</i> |
|-----------|-------|------|--------|------|--------------|------|--------|------|----------|
|           | FFT   | S.D. | Visual | S.D. | FFT          | S.D. | Visual | S.D. |          |
| 2000      |       |      |        |      | no response  |      |        |      | 4        |
| 1000      |       |      |        |      | no response  |      |        |      | 9        |
| 500       |       |      |        |      | no response  |      |        |      | 11       |
| 400       | 100.1 | 2.9  | 130.6  | 6.3  | -8.1         | 2.9  | 22.4   | 6.3  | 10       |
| 350       | 96.3  | 2.8  | 130.0  | 5.0  | -17.7        | 2.8  | 16.0   | 5.0  | 4        |
| 300       | 90.6  | 4.2  | 124.7  | 3.4  | -33.1        | 4.2  | 8.8    | 3.4  | 19       |
| 250       | 96.8  |      | 128.0  |      | -19.7        |      | 11.6   |      | 2        |
| 200       | 100.3 | 7.6  | 130.7  | 7.8  | -42.8        | 7.6  | -12.1  | 7.8  | 18       |
| 150       | 124.3 | 3.3  | 141.9  | 2.9  | -9.3         | 3.3  | 8.7    | 2.9  | 21       |
| 100       | 114.9 | 2.8  | 132.4  | 3.2  | -28.3        | 2.8  | -0.3   | 3.2  | 21       |
| 50        | 99.2  | 3.1  | 121.9  | 5.1  | -13.9        | 3.1  | 6.7    | 5.1  | 12       |

589 Table II. Simulated megapclick (MC) sound settings.

590

---

| Simulated<br>megapclick<br>pulse no. | Peak Freq. (Hz) | Duration (ms) | Starting SPL (dB re 1 $\mu$ Pa) | Responses/fish<br>tested |
|--------------------------------------|-----------------|---------------|---------------------------------|--------------------------|
| MC1                                  | 123             | 43            | 159.5                           | 3/3                      |
| MC2                                  | 136             | 50            | 169.4                           | 4/6                      |
| MC3                                  | 137             | 51            | 169.9                           | 3/7                      |
| MC4                                  | 139             | 44            | 160.0                           | 2/3                      |
| MC5                                  | 178             | 52            | 169.6                           | 6/6                      |
| MC6                                  | 763             | 3             | 157.7                           | 0/4                      |
| MC7                                  | 1323            | 2             | 154.1                           | 0/4                      |
| MC8                                  | 2153            | 4             | 152.5                           | 0/5                      |

---

591

592

Figure 1.

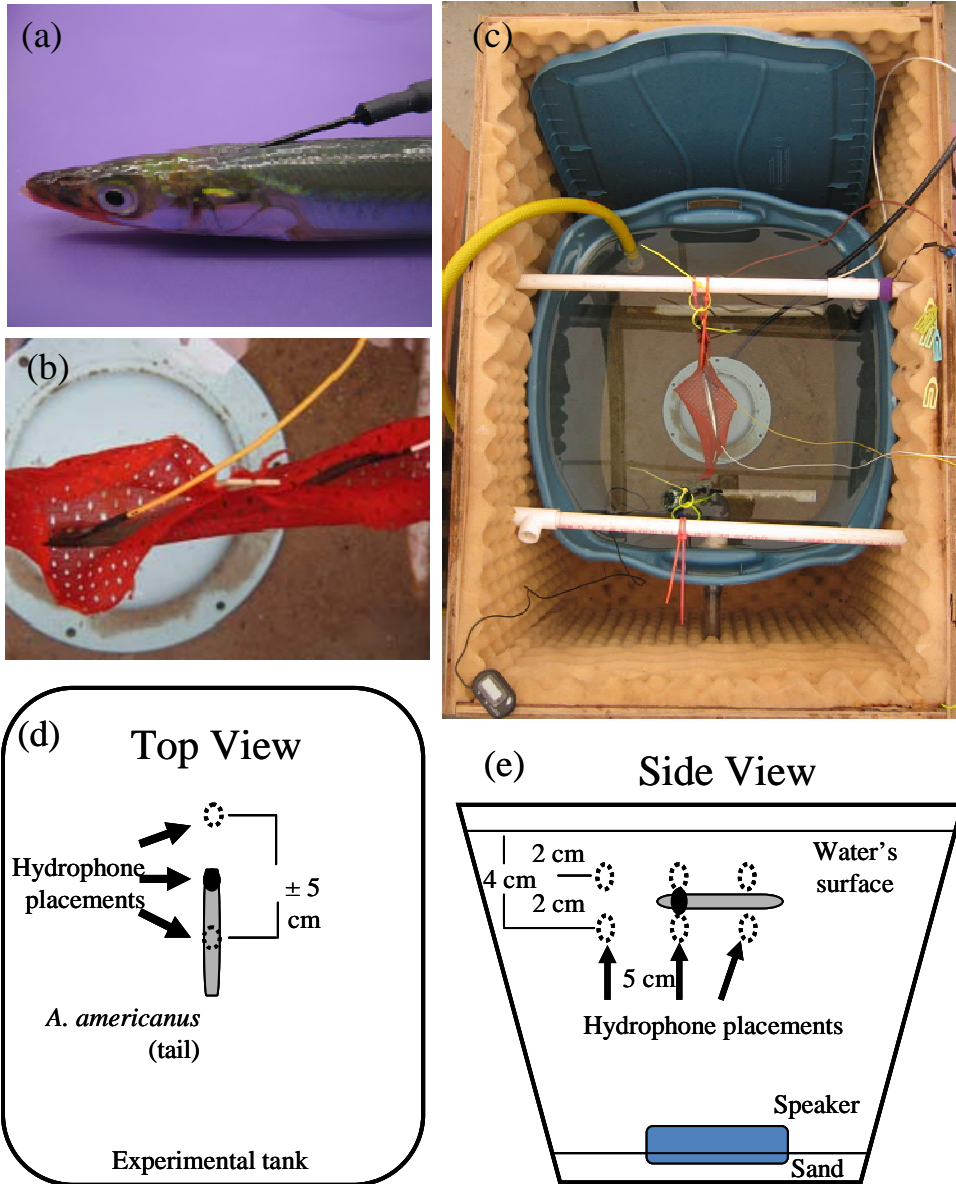


Figure 2.

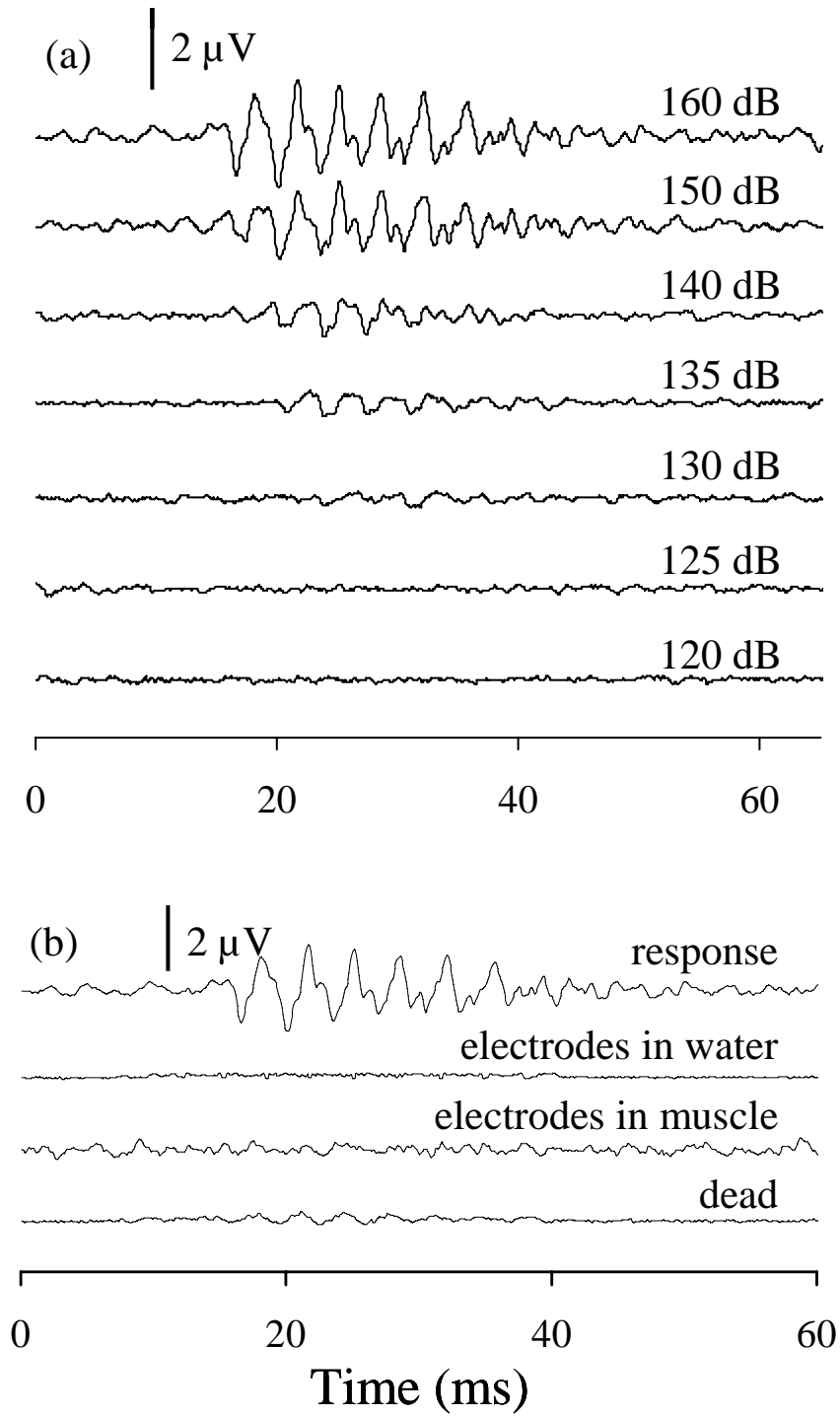


Figure 3.

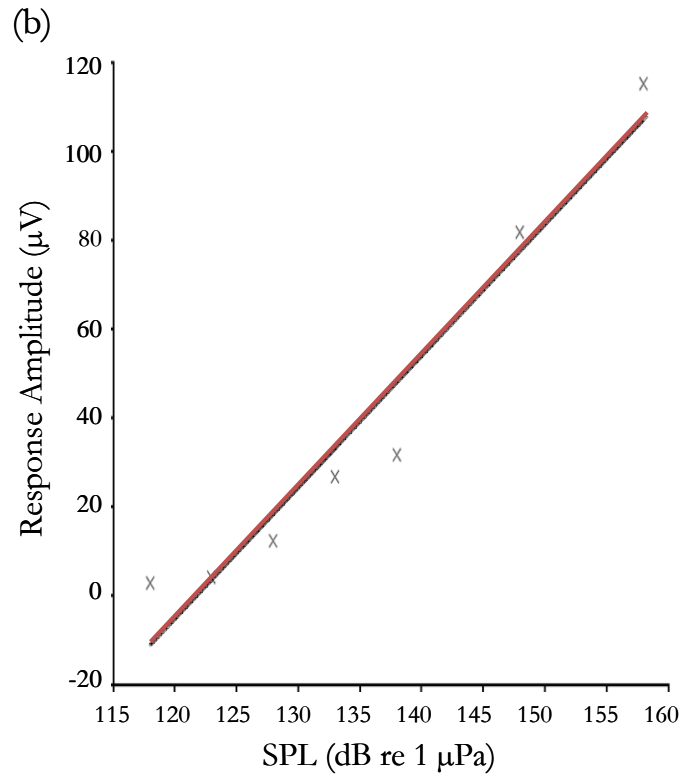
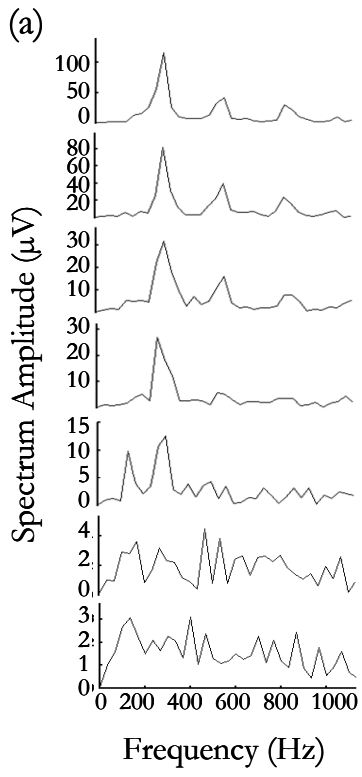




Figure 4.

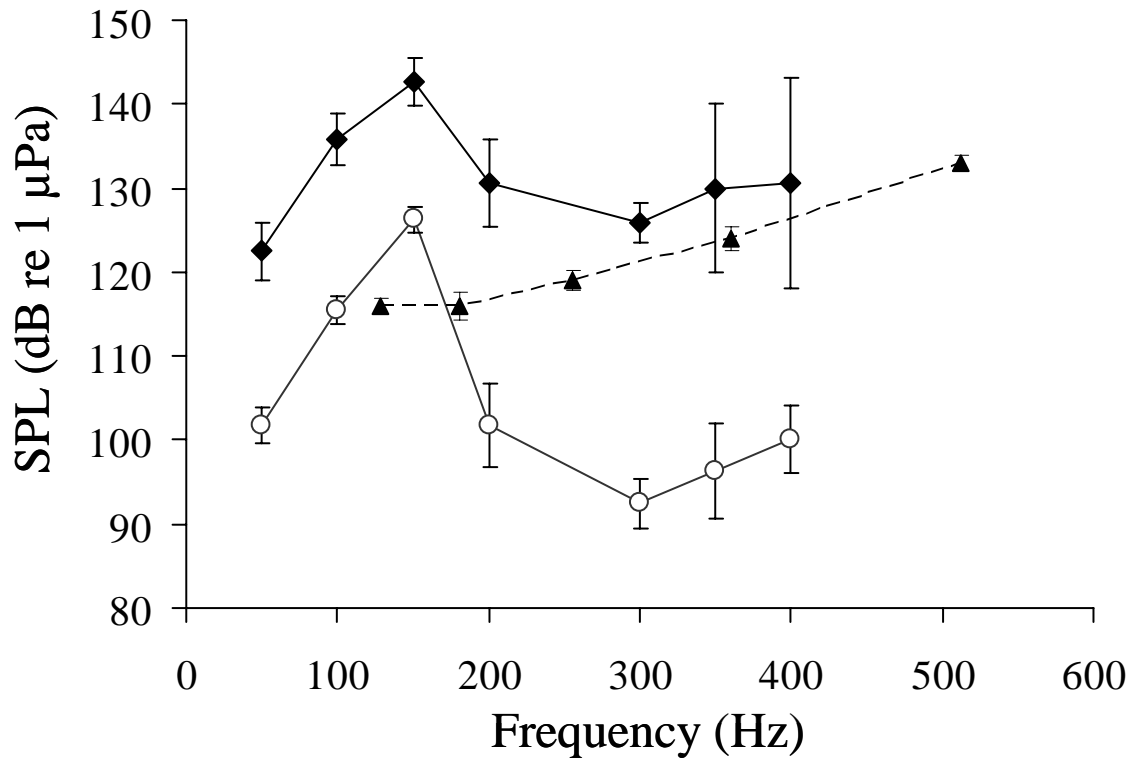


Figure 5.

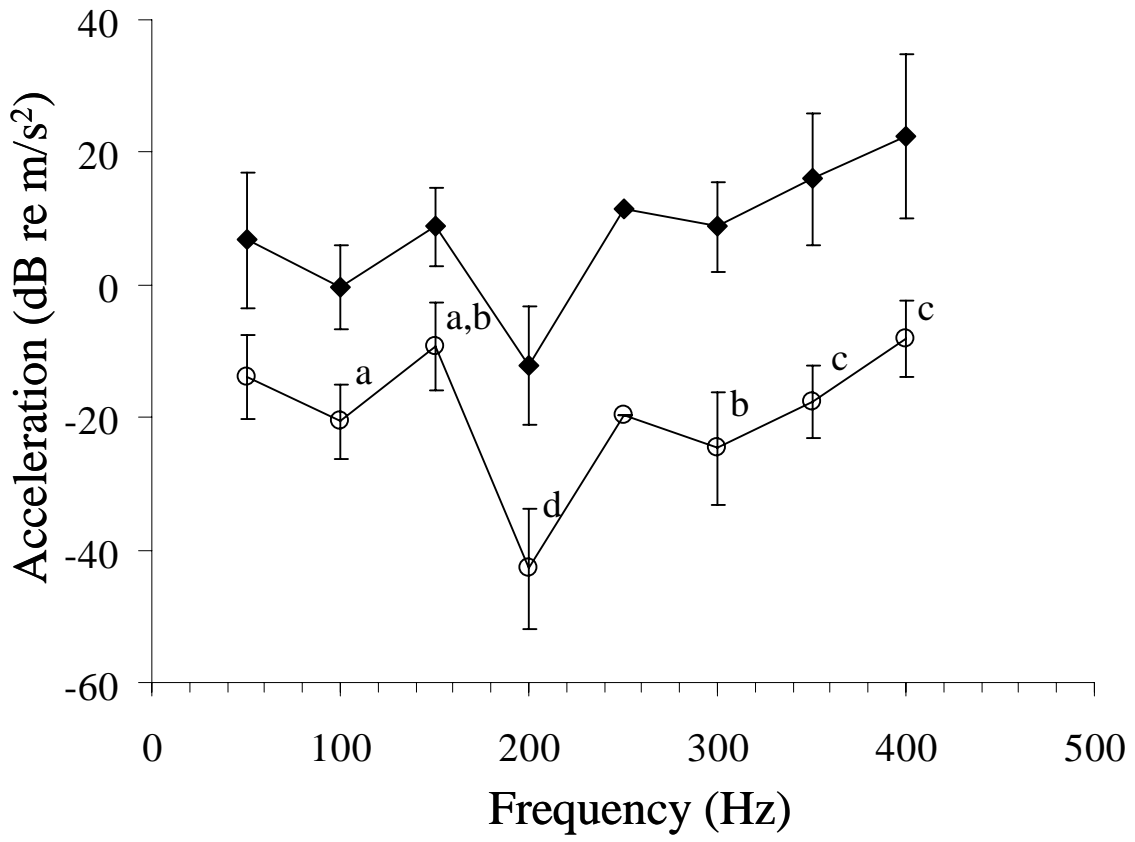


Figure 6.

