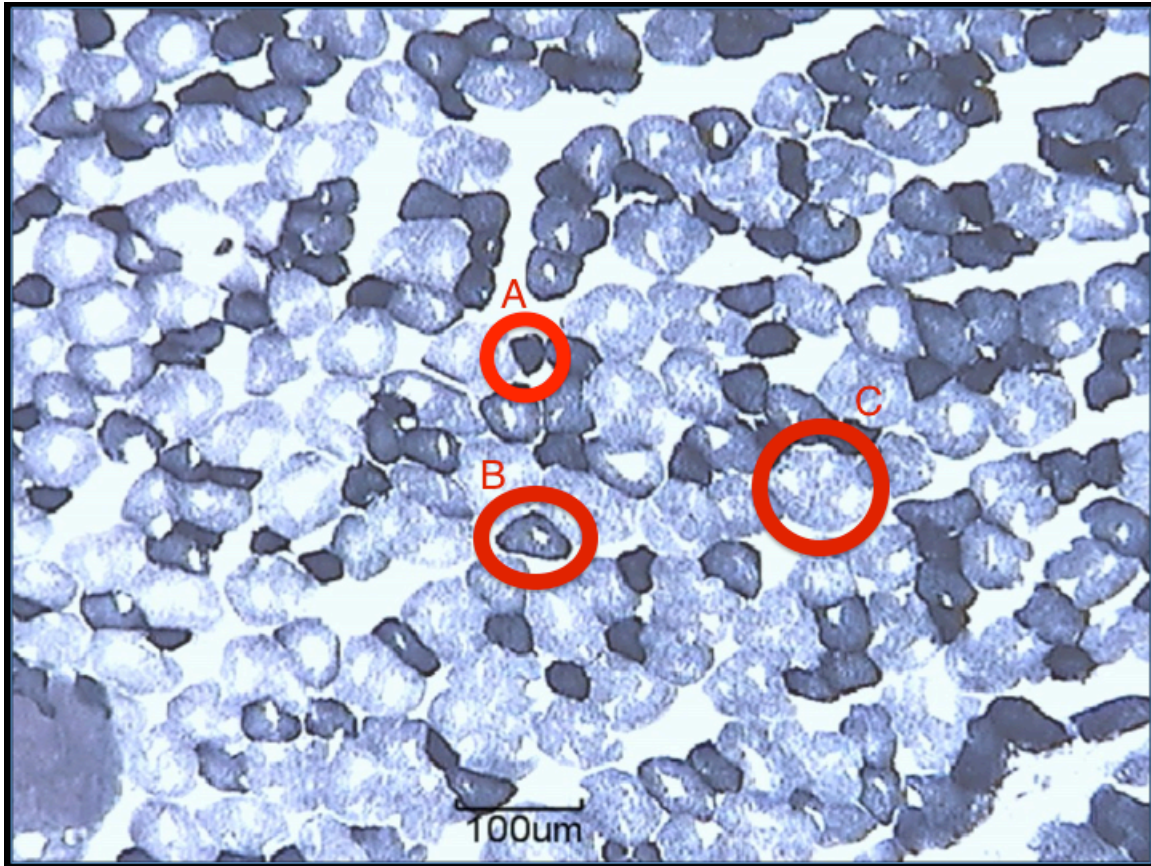




Supplementary figure 1 (A-C): Succinate dehydrogenase fiber typing profile from a California sea lion pectoral muscle revealing three fiber types: type I (A), IIa (B) and IIb (C), each designated with circles. The succinate dehydrogenase stain demarks each fiber type based on color intensity correlated with oxidative capacity, where type I oxidative fibers stain darkest and type IIb anaerobic fibers are lightest.



Supplementary figure 2 (A-C): Succinate dehydrogenase fiber typing profile from a mouse revealing three fiber types: type I (A), IIa (B) and IIb (C), each designated with circles. The succinate dehydrogenase stain demarks each fiber type based on color intensity correlated with oxidative capacity, where type I oxidative fibers stain darkest and type IIb anaerobic fibers are lightest.