

1 **Long-term Pattern and Magnitude of Soil Carbon Feedback to the Climate System in a**  
2 **Warming World**

3 **Authors:** J.M. Melillo<sup>1\*</sup>, S.D. Frey<sup>2</sup>, K.M. DeAngelis<sup>3</sup>, W.J. Werner<sup>1</sup>, M.J. Bernard<sup>1</sup>, F.P.  
4 Bowles<sup>4</sup>, G. Pold<sup>5</sup>, M.A. Knorr<sup>2</sup>, A.S. Grandy<sup>2</sup>

5 **Affiliations:**

6 <sup>1</sup>The Ecosystems Center, Marine Biological Laboratory, Woods Hole, MA 02543, USA

7 <sup>2</sup>Department of Natural Resources and the Environment, University of New Hampshire, Durham,  
8 NH 03824, USA

9 <sup>3</sup>Department of Microbiology, University of Massachusetts, Amherst, MA 01003, USA

10 <sup>4</sup>Research Designs, Lyme, NH 03768, USA

11 <sup>5</sup>Graduate Program in Organismic and Evolutionary Biology, University of Massachusetts,  
12 Amherst, MA 01003, USA

13 \*Correspondence to: jmelillo@mbl.edu

14 **Abstract:** In a 26-year soil warming experiment in a mid-latitude hardwood forest, we  
15 documented changes in soil carbon cycling to investigate the potential consequences for the  
16 climate system. We found that soil warming results in a four-phase pattern of soil organic matter  
17 decay and carbon dioxide fluxes to the atmosphere, with phases of substantial soil carbon loss  
18 alternating with phases of no detectable loss. Several factors combine to affect the timing,  
19 magnitude, and thermal acclimation of soil carbon loss. These include depletion of microbially  
20 accessible carbon pools, reductions in microbial biomass, a shift in microbial carbon use  
21 efficiency, and changes in microbial community composition. Our results support projections of  
22 a long-term, self-reinforcing carbon feedback from mid-latitude forests to the climate system as  
23 the world warms.

24 **One Sentence Summary:** A 26-year soil warming experiment supports projections of a long-  
25 term, self-reinforcing carbon feedback from forest soils to the climate system.

26 **Main Text:** A large and poorly understood component of global warming is the  
27 terrestrial carbon cycle feedback to the climate system (1). Simulation experiments with fully

28 coupled, three-dimensional carbon-climate models suggest that carbon cycle feedbacks could  
29 substantially accelerate or slow climate change over the 21st century (2–4). Both the sign and  
30 magnitude of these feedbacks in the real Earth system are still highly uncertain because of gaps  
31 in basic understanding of terrestrial ecosystem processes. For example, the potential switch of  
32 the terrestrial biosphere from its current role as a carbon sink to a carbon source is critically  
33 dependent on the long-term temperature sensitivity of soil organic matter (SOM) decay (5–7)  
34 and complex carbon-nitrogen interactions that will likely occur in a warmer world (8–12).  
35 However, without long-term field-based experiments, the sign of the feedback cannot be  
36 determined, the complex mechanisms regulating that feedback cannot be quantified, and models  
37 that incorporate the soil's role in carbon feedbacks to the climate system cannot be tested.

38         Here, we present results from a long-term (26-year) soil-warming experiment designed to  
39 explore these feedback issues in an ecosystem context. We started our soil warming study in  
40 1991 in an even-aged mixed hardwood forest stand at the Harvard Forest in central  
41 Massachusetts (42.54°N, 72.18°W), where the dominant tree species are red maple (*Acer rubrum*  
42 L.) and black oak (*Quercus velutina* Lam.). The soil is a stony loam with a distinct organic  
43 matter-rich forest floor. (See the supplementary materials for more information on the site's  
44 soils, climate, and land-use history.)

45         The field manipulation contains 18 plots, each 6 × 6 m, that are grouped into six blocks.  
46 The three plots within each block are randomly assigned to one of three treatments: (i) heated  
47 plots in which the average soil temperature is continuously elevated 5°C above ambient by the  
48 use of buried heating cables; (ii) disturbance control plots that are identical to the heated plots  
49 except that they receive no electrical power; and (iii) undisturbed control plots that have been left  
50 in their natural state (no cables). The heating method works well under a variety of moisture and  
51 temperature conditions (13). Here, we compared carbon dynamics measured in the heated plots  
52 to those measured in the disturbance control plots, so as to isolate heating effects from the effects  
53 of cable installation (e.g., root cutting and soil compaction) (14).

54         We used a static chamber technique (14) to measure soil CO<sub>2</sub> emission rates in the study  
55 plots monthly between April and November each year for 26 years (see supplementary  
56 materials). An ephemeral but significant soil respiration response to warming occurred over the  
57 experiment's first decade (Fig. 1), with soil respiration greater in the heated plots than in the

58 controls (phase I). In the next phase of the response, phase II (years 11 to 17), soil respiration  
59 rates in the heated plots were generally equal to or less than those in the control plots. During  
60 years 18 to 23 of the study (phase III), we observed a second trend reversal, with soil respiration  
61 once again higher in the heated plots. In the three most recent years (phase IV) of the study, 2014  
62 to 2016, soil respiration rates in the heated plots were again equal to or less than those in the  
63 control plots.

64 We partitioned soil respiration into its two components, root and microbial respiration.  
65 On the basis of field measurements of root respiration made between June and November 2009,  
66 we developed a temperature-driven root respiration model that we used to estimate root  
67 respiration over the course of the experiment (see supplementary materials). We calculated  
68 microbial respiration by difference, with microbial respiration equaling soil respiration minus  
69 root respiration (10). Our estimate is that two-thirds of the cumulative CO<sub>2</sub>-C emitted from the  
70 plots over the 26-year study has been microbial. By this analysis, we calculate a warming-  
71 induced soil carbon loss from the full soil profile over the 26-year study of  $1510 \pm 160 \text{ g C m}^{-2}$ ,  
72 which is equivalent to a 17% loss of the soil carbon found in the top 60 cm of the soil at the start  
73 of the experiment. With respect to timing, we estimate that about three-quarters of this soil  
74 carbon loss occurred during phase I, and the remaining quarter during phase III. No measurable  
75 carbon loss occurred during either phase II or phase IV (Fig. 2).

76 In both the control and heated plots, we made direct measurements of carbon stocks in  
77 the upper horizons of the soil profile—the distinct, organic matter-rich surface horizon or forest  
78 floor and the top 30 cm of the mineral soil just beneath the forest floor (fig. S1). We measured a  
79 carbon loss from the forest floor in response to soil warming of  $800 \pm 300 \text{ g C m}^{-2}$ , which  
80 represents a 31% reduction in forest floor carbon stock over the 26-year study. With our direct  
81 measurements, we did not detect any statistically significant changes in the carbon stocks across  
82 the top 30 cm of the mineral soil horizon. However, combining our estimate of carbon loss from  
83 the full profile based on the respiration measurements with the carbon loss measured from the  
84 forest floor, we estimate that the warming-induced carbon loss from the mineral soil in the full  
85 soil profile over the study period was  $710 \text{ g C m}^{-2}$ . An in situ soil warming experiment in a  
86 California forest also shows that warming increases the decay of subsoil organic matter (15).

87 We explored possible relationships between the multiphase pattern in soil respiration and  
88 multiyear variations in climate, and found none (see supplementary materials and fig. S2, A and  
89 B). We propose that several biogeochemical factors combine to affect the timing, magnitude, and  
90 thermal acclimation of soil carbon loss. These include depletion of microbially accessible carbon  
91 pools, reductions in microbial biomass, a shift in microbial carbon use efficiency, and changes in  
92 microbial community composition. Thermal acclimation, a phenomenon observed in response to  
93 soil warming in a grassland ecosystem (16), was evident in all four phases of our long-term soil  
94 warming experiment, such that at a given temperature there was less respiration from the heated  
95 plots than from the control plots (Fig. 3). During phases I and III, the acclimation was  
96 insufficient to compensate for the 5°C increase in soil temperature, so that CO<sub>2</sub> emissions from  
97 heated plots were greater than from control plots. During phases II and IV, however, acclimation  
98 was large enough to compensate for the 5°C increase in soil temperature.

99 In this study, the importance of thermal acclimation of the soil respiration response  
100 became evident when power to the heated plots was off for part of the year in 1995 and 2005 and  
101 throughout 2010. The power shutdowns in 1995 and 2005 resulted when summer lightning strikes  
102 damaged the system that controlled experimental heating. The power shutdown in 2010 was  
103 planned and carried out to increase our understanding of the thermal acclimation response. In the  
104 three instances, soil respiration rates in the powered down heated plots dropped below those of  
105 the controls after the power was off, and they returned (within weeks) to rates above the controls  
106 once the power was restored (fig. S3).

107 Our biogeochemical and molecular observations suggest that warming causes cycles of  
108 soil carbon decay punctuated by periods of structural and functional changes in the microbial  
109 community. Sustained reductions of microbial biomass over the course of the experiment [(17–  
110 19) and this study] have been accompanied by several other changes, including (i) altered  
111 respiratory and lipid profiles (17); (ii) changes in microbial community structure and function as  
112 determined using small subunit ribosomal RNA analysis (20, 21), metagenomics (22), and  
113 enzyme assays (19, 21); (iii) characterization of substrate utilization profiles of bacterial isolates  
114 (22); and (iv) measurements of microbial carbon use efficiency (23).

115 We have integrated these observations (Table 1) to develop a conceptual model of the  
116 time-varying (four-phase) effects of soil warming on feedback to climate. Phase I was a period of

117 substantial soil carbon loss, especially from the surface organic horizon. The rate of carbon loss  
118 essentially followed an exponential decay pattern, rapid at first, slowing to near zero over the  
119 experiment's first decade. In phase II, soil respiration rates in the heated plots were generally  
120 equal to or less than those in the control plots. The transition from phase I to phase II was  
121 characterized by a depletion of a labile C pool (18), which is considered to be the driver of  
122 reduced microbial biomass (24).

123 Phase II appears to have been a period of microbial community reorganization, leading to  
124 changes in structure and function. During this time, soil heating reduced the abundance of fungal  
125 biomarkers and also caused a shift toward Gram-positive bacteria and especially actinobacteria  
126 (17). Along with these structural changes, heating reduced the capacity of microbial community  
127 to utilize simple C substrates (17).

128 The transition from phase II to phase III was characterized by a continued shift toward a  
129 more oligotrophic microbial community with increased diversity due to increased evenness  
130 (Pielou's J statistic), reduced microbial biomass, and reduced fungal dominance, as evidenced by  
131 the same population size of bacteria and narrowed fungal/bacterial ratios for C-degrading genes  
132 (20).

133 In phase III, soil respiration rates were higher in the heated plots than in the controls. This  
134 third phase appears to have been a period when recalcitrant substrates such as lignin became an  
135 important source of carbon for the microbial community. This is consistent with the evidence  
136 that during phase III, relative to controls, there was an increase by a factor of 4 in potential  
137 lignin-degrading enzyme (lignase) activity in surface soils from the heated plots (21).

138 As phase III transitioned toward phase IV, we observed a reduction in the relative  
139 abundance of lignin in the soil C pool in the surface mineral horizon (19). At the same time, the  
140 magnitude of the carbon loss to the atmosphere through decomposition during this period may  
141 have been attenuated somewhat by a shift toward higher microbial carbon use efficiency for  
142 recalcitrant substrates in warmed soils relative to control soils (23).

143 Our study is just 3 years into phase IV. This new phase may turn out to be another period  
144 of microbial community reorganization that will eventually transition to yet another phase of  
145 further carbon loss from decay of recalcitrant forms of SOM. Because recalcitrant SOM pools  
146 make up a substantial fraction of global soil carbon stocks (25), small changes in the decay rates

147 of these pools could result in a large self-reinforcing feedback to the climate system over  
148 multiple decades (26). As a preliminary test of global significance, extrapolating our results to  
149 the world's forests, we estimate a global aggregate soil carbon loss from the upper 1 m of soil  
150 (27) over the 21st century of ~190 Pg C. This does not account for possible future climate-driven  
151 changes in plant-soil interactions that could affect the long term balance between the formation  
152 and decomposition of SOM. Critical to this balance will be changes in the amount of fresh  
153 carbon transferred from plants to the soils as the world warms. Inputs of this fresh carbon can  
154 contribute to soil carbon sequestration, but they can also accelerate the decomposition of more  
155 recalcitrant forms of SOM through biological priming mechanisms (28).

156 Our first-order estimate of a warming-induced loss of 190 Pg of soil carbon over the 21st  
157 century is equivalent to the past two decades of carbon emissions from fossil fuel burning (29)  
158 and is comparable in magnitude to the cumulative carbon losses to the atmosphere due to human  
159 driven land use change during the past two centuries (30). A transfer of carbon of this magnitude  
160 from forest soils to the atmosphere in response to warming would amplify the mitigation  
161 challenge already faced by society. It is also important to recognize that a global-scale,  
162 microbially mediated feedback could be very difficult, if not impossible, to halt.

### 163 **References and Notes:**

- 164 1. J.G. Canadell et al. Contributions to accelerating atmospheric CO<sub>2</sub> growth from economic  
165 activity, carbon intensity, and efficiency of natural sinks. *Proc. Natl. Acad. Sci. U.S.A.*  
166 **104**. 18866-18870 (2007). doi:10.1038/nature06591
- 167 2. P. Friedlingstien et al. Climate-carbon cycle feedback analysis: results from the C4MIP model  
168 intercomparison. *J. Clim.* **19**. 3337-3353 (2006). doi:10.1038/nature06591
- 169 3. M. Heimann, M. Reichstein. Terrestrial ecosystem carbon dynamics and climate feedbacks.  
170 *Nature* **451**. 289-292 (2008). doi:10.1038/nature06591
- 171 4. P. Ciais et al. "Carbon and other biogeochemical cycles" in Climate change 2013: the physical  
172 science basis. *Working group I contribution to the IPCC fifth assessment report (AR5)*.  
173 (IPCC, Geneva, Switzerland, 2013). doi:10.1017/CBO9781107415324

174

- 175 5. E. A. Davidson, I. A. Janssens Temperature sensitivity of soil carbon decomposition and  
176 feedbacks to climate change. *Nature* **440**. 165–173 (2006). doi:10.1038/nature04514
- 177 6. M.W.I. Schmidt et al. Persistence of soil organic matter as an ecosystem property. *Nature* **478**.  
178 49-56 (2011). doi:10.1038/nature10386
- 179 7. M. Lu et al. Responses of ecosystem carbon cycle to experimental warming: a meta-analysis.  
180 *Ecology*. **94**, 726-38 (2013). doi: 10.1890/12-0279.1
- 181 8. J.M. Melillo, D.W. Kicklighter, A.D. McGuire, W.T. Peterjohn, K.M. Newkirk. “Global  
182 change and its effects on soil carbon stocks” in *Report of the Dahlem workshop on the*  
183 *role of nonliving organic matter in the earth’s carbon cycle*, R. Zepp, C. Sonntag, Eds.  
184 (Wiley, 1995).doi:10.1002/aheh.19960240519
- 185 9. J.M. Melillo et al. Soil warming and carbon-cycle feedbacks to the climate system. *Science*  
186 **298**. 2173-2776 (2002). doi:10.1126/science.1074153
- 187 10. J.M. Melillo et al. Soil warming, carbon-nitrogen interactions, and forest carbon budgets.  
188 *Proc. Natl. Acad. Sci. U.S.A.* **108**. 9508-9512 (2011). doi:10.1073/pnas.1018189108
- 189 11. A.P. Sokolov et al. Consequences of considering carbon-nitrogen interactions on the  
190 feedbacks between climate and the terrestrial carbon cycle. *J Clim.* **21**. 3776-3796 (2008).  
191 doi:10.1175/2008JCLI2038.1
- 192 12. P.E. Thornton et al. Carbon-nitrogen interactions regulated climate-carbon cycle feedbacks:  
193 results from an atmosphere-ocean general circulation model. *Biogeosciences* **6**. 2099-  
194 2120 (2009). doi:10.5194/bg-6-2099-2009
- 195 13. W.T. Peterjohn, J.M. Melillo, F.P. Bowles, P.A. Steudler. Soil warming and trace gas fluxes:  
196 Experimental design and preliminary flux results. *Oecologia* **93**:18-24 (1993).  
197 doi:10.1007/BF00321185
- 198 14. W.T. Peterjohn et al. The response of trace gas fluxes and N availability to elevated soil  
199 temperatures. *Ecol. Appl.* **4**: 617-625 (1994). doi:10.2307/1941962
- 200 15. C.E. Hicks Preis, C. Castanha, R.C. Porras, M.S. Torn. The whole-soil carbon flux in  
201 response to warming. *Science* **355**, 1420-1423 (2017)

- 202 16. Y. Luo, S. Wan, D. Hui, L.L. Wallace. Acclimatization of soil respiration to warming in a  
203 tall grass prairie. *Nature* **413**, 622-625 (2001).
- 204 17. S.D. Frey, R. Drijber, H. Smith, J.M. Melillo. Microbial biomass, functional capacity, and  
205 community structure after 12 years of soil warming. *Soil Biol. Biochem.* **40**: 2904–2907  
206 (2008). doi:10.1016/j.soilbio.2008.07.020
- 207 18. M.A. Bradford et al. Thermal Adaptation of Soil Microbial Respiration to Elevated  
208 Temperature. *Ecology Letters*. **11**: 1316–1327. doi:10.1111/j.1461-  
209 0248.2008.01251.x.(2008). doi:10.1111/j.1461-0248.2008.01251.x
- 210 19. G. Pold, A.S. Grandy, J.M. Melillo, K.M. DeAngelis. Changes in substrate availability drive  
211 carbon cycle response to chronic warming. *Soil Biol. Biochem.* **110**. 68-783. (2017).  
212 doi:10.1016/j.soilbio.2017.03.002.
- 213 20. K.M. DeAngelis, et al. Long-term forest soil warming alters microbial communities in  
214 temperate forest soils. *Front. Microbiol.* **6**. 104 (2015). doi:10.3389/fmicb.2015.00104
- 215 21. G. Pold, J.M. Melillo, K.M. DeAngelis. Two decades of warming increases diversity of a  
216 potentially lignolytic bacterial community. *Front. Microbiol.* **6** 480 (2015)  
217 doi:10.3389/fmicb.2015.00480
- 218 22. G. Pold et al. Long-term warming alters carbohydrate degradation potential in temperate  
219 forest soils. *Appl. Environ. Microbiol.* **82**. 6518-6530. (2016). doi:10.1128/AEM.02012-  
220 16
- 221 23. S.D. Frey, J. Lee, J.M. Melillo, J. Six. The temperature response of microbial efficiency and  
222 its feedback to climate. *Nat. Clim. Chang.* **3**.395-398 (2013). doi:10.1038/nclimate1796
- 223 24. S.D. Allison, M.D. Wallenstein, M.A. Bradford. Soil-carbon response to warming dependent  
224 on microbial physiology. *Nature Geoscience* **3**, 336–340 (2010).
- 225 25. S.E. Trumbore. Potential Responses of Soil Organic Carbon to Global Environmental  
226 Change. *Proc. Natl. Acad. Sci. U.S.A.* **94**: 8284-8291 (1997).  
227 doi:10.1073/pnas.94.16.8284
- 228 26. T. W. Crowther et al. Quantifying global soil carbon losses in response to warming. *Nature*  
229 **540**, 104–108 (2016).



230  
231  
232  
233  
234  
235  
236  
237  
238  
239  
240  
241  
242  
243  
244  
245  
246  
247  
248  
249  
250  
251  
252  
253  
254  
255  
256  
257

27. E.G. Jobbágy, R.B. Jackson. The vertical distribution of soil organic carbon and its relation to climate and vegetation. *Ecol. Appl.* **10**, 423-436 (2000). doi:10.1890/1051-0761(2000)010%5B0423:TVDOSO%5D2.0.CO;2

28. J. Rousk, P.W. Hill, D.L. Jones Priming of the decomposition of ageing soil organicmatter: concentration dependence and microbial control. *Functional Ecology* **29**, 285–296 (2015) doi: 10.1111/1365-2435.12377

29. C. Le Quéré et al. Global Carbon Budget 2016. *Earth Syst. Sci. Data*, **8**, 605-649 (2016). doi:10.5194/essd-8-605-2016.

30. R.S. DeFries, C.B.,Field, I. Fung, G.J. Collatz, L. Bounoua. Combining satellite data and biogeochemical models to estimate global effects of human-induced land cover change on carbon emissions and primary productivity. *Global Biogeochemical Cycles* **13**: 803-815 (1999). doi: 10.1029/1999GB900037..

31. E. Boose, E. Gould. Shaler Meteorological Station at Harvard Forest 1964-2002. Harvard Forest Data Archive: HF000. (1999). Accessed 6/1/2017.

32. E. Boose. Fisher Meteorological Station at Harvard Forest since 2001. Harvard Forest Data Archive: HF001 (2001). Accessed 6/1/2017.

33. R. D. Bowden, J.M. Melillo, P.A. Steudler and J.D. Aber. Effects of nitrogen additions on annual nitrous oxide fluxes from temperate forest soils in the northeastern United States. *Journal of Geophysical Research* **96**: 9321-9328, (1991) doi: 10.1029/91JD00151.

34. R. Setia, S.L. Verma, P. Marschner. Measuring microbial biomass carbon by direct extraction—comparison with chloroform fumigation-extraction. *European Journal of Soil Biology* **53**. 103-106 (2012). doi:10.1016/j.ejsobi.2012.09.005

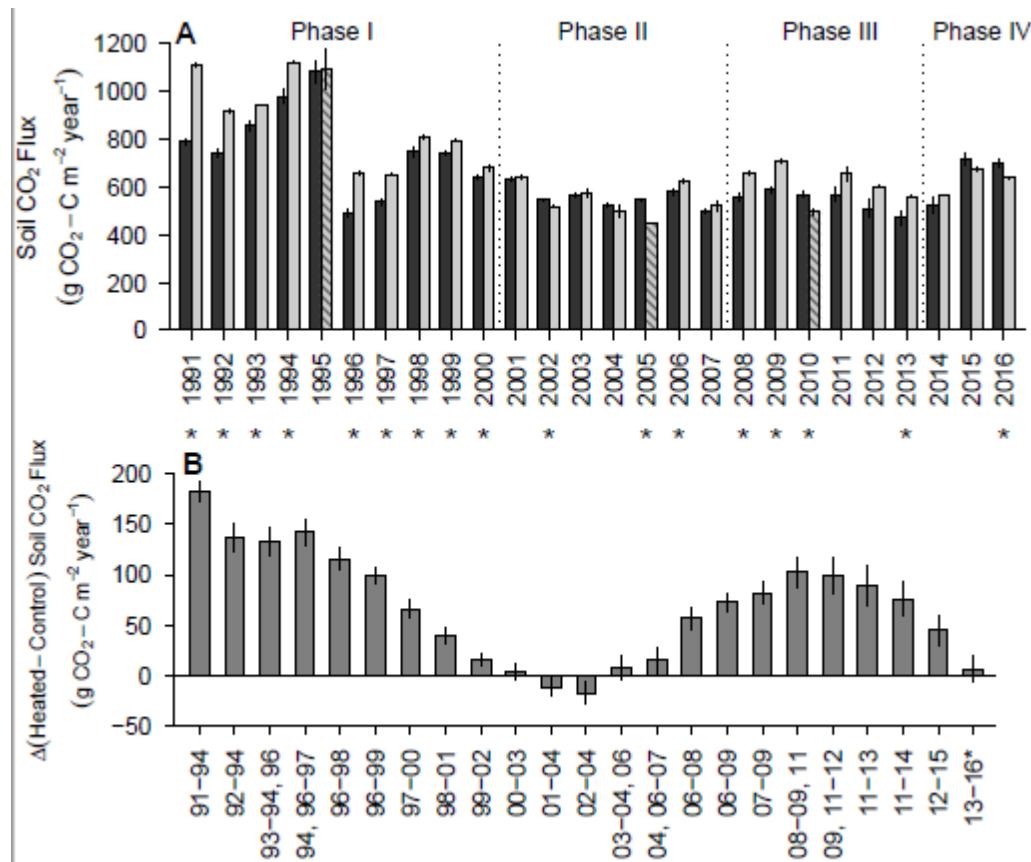
35. A. R. Contosta, S. D. Frey, A. B. Cooper. Seasonal dynamics of soil respiration and N mineralization in chronically warmed and fertilized soils. *Ecosphere* **2**, Article 36. (2011).

258 **Acknowledgments:** This research has been supported by grants from the Department of Energy  
259 - DE-SC0010740; DOE DE-SC0016590: and the National Science Foundation - DEB 1237491  
260 (LTER) ; DEB 1456528 (LTREB).

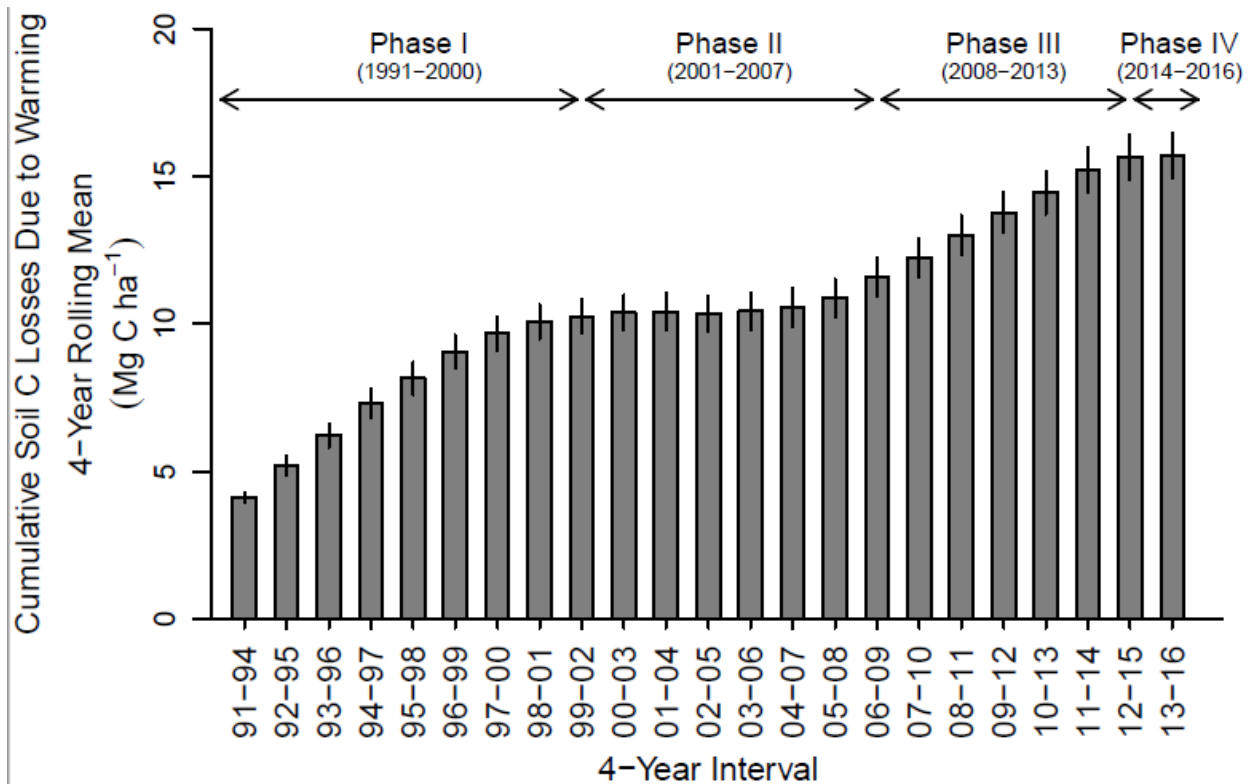
261  
262 We thank the team of scientists who worked with us on the study over the past 26 years,  
263 including T. Ahrens, C. Baldino, J. Blanchard, M. Bradford, L. Burrows, A. Burton, S. Butler, C.  
264 Catricala, R. Hanifin, T. Hill, J. Johnson, H. Lux, J. Mohan, S. Morrisseau, K. Newkirk, W.  
265 Peterjohn, A. Ricca, L. Scott, R. Smith, P.Steudler, C. Vario.

266  
267 Datasets pertaining to this study are available on the Harvard Forest Online Data Archive  
268 (<http://harvardforest.fas.harvard.edu/harvard-forest-data-archive>), datasets hf005 and hf171.

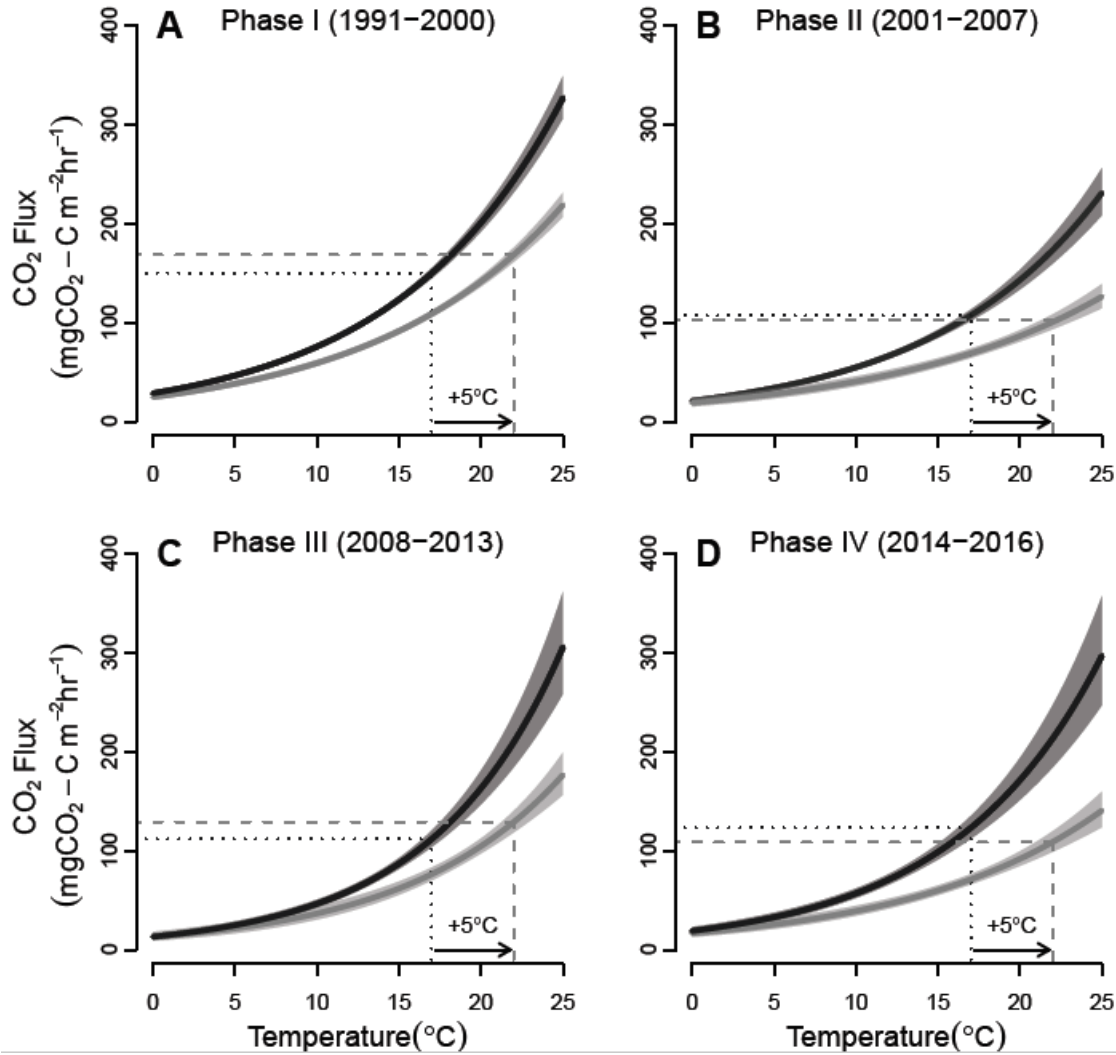
269  
270  
271  
272  
273  
274  
275  
276



277  
 278 **Fig. 1. Effect of soil warming on soil respiration over 26 years. (A)** Annual soil CO<sub>2</sub> emissions  
 279 from the control plots (black bars) and heated plots (gray bars). Asterisks denote years when  
 280 the heated and control plots are significantly different (paired-sample t tests or Wilcoxon  
 281 signed-rank tests as appropriate, n = (6, 6), \*P < 0.05; see supplementary materials). Hatched  
 282 bars denote years when the heating system was inactive for the majority of the growing  
 283 season. Error bars denote SEM (n = 6). **(B)** Four-year rolling mean increase in soil CO<sub>2</sub> emissions  
 284 in the heated plots relative to the control plots, excluding years when the heating system was  
 285 inactive for the majority of the growing season. Error bars denote SEM derived from  
 286 propagating SE estimates from (A) through the operations necessary to produce (B). See fig. S4  
 287 for annual changes in soil CO<sub>2</sub> emissions in the heated plots relative to the control plots.  
 288



289  
 290 **Fig. 2. Four-year rolling mean cumulative modeled soil carbon losses from the full soil**  
 291 **profile over 26 years of soil warming in the heated plots relative to the control plots.**  
 292 Relative soil carbon losses are calculated as the difference in heterotrophic soil respiration  
 293 between the heated plots and the control plots. Error bars denote SEM, calculated for the heated  
 294 (n = 6) and control (n = 6) plots for each year and propagated through the necessary operations to  
 295 produce this figure.



296

297

298

299

300

301

302

303

304

305

306

307

308

**Fig. 3. Relationship between soil respiration and soil temperature in the heated and control plots during each phase of the experiment.** We modeled this relationship as an exponential function of soil temperature:  $\text{respiration} = a[\exp(b \times \text{temperature})]$ , where  $a$  is respiration rate at 0°C and  $b$  is temperature sensitivity of respiration. Solid dark gray curves represent control plot models; solid light gray curves represent heated plot models. For the purposes of this figure, each model was fitted to all respiration data collected within the phase. Shaded areas around each curve represent normal-based 95% confidence intervals. Dashed lines illustrate predicted soil respiration during each phase when the control plots are 17°C and the heated plots are 22°C, the respective summer modal temperatures of the control and heated plots over the course of the experiment.

Measurement	Organic		Mineral		Method (units)	Ref
	% change	Effect size	% change	Effect size		
<b>Phase I (1991-2002)</b>						
<b>Phase II (2001-2007)</b>						
Depletion of labile soil C pool	-25%	-3.3	-25%	-3.5	DOC <sup>a</sup> (ug C g <sup>-1</sup> soil), seasonal median	18
Reduction in microbial use of simple C	-33%	-4.3	-57%	-5	SIR <sup>b</sup> (ug C g <sup>-1</sup> soil day <sup>-1</sup> ), seasonal median	18
Reduction in microbial use of simple C	-44%	-3.4	-44%	-3.4	SIR <sup>b</sup> (ug C g <sup>-1</sup> soil day <sup>-1</sup> )	17
Reduction of microbial biomass	-74%	-3.6	-12%	-0.6	CFE <sup>c</sup> (ug C g <sup>-1</sup> soil), seasonal median	18
Reduction of microbial biomass	-26%	-3.5	-27%	-6.1	Lipid P (nmol g <sup>-1</sup> soil)	17
Relative loss of fungal biomass	-19%	-3.0	-28%	-3.8	Lipid P (nmol g <sup>-1</sup> soil), fungi	17
Decline in fungal:bacterial ratio	-14%	-5.0	-23%	-8.5	Lipid P (nmol g <sup>-1</sup> soil)	17
<b>Phase III (2008-2013)</b>						
Restructuring of microbial community	3.5%	2.1	3%	1.2	Phylogenetic diversity (Shannon's H)	20
Shift towards more oligotrophic community	-5.0%	-1.2	2%	0.4	rRNA copy number	20
Acceleration of microbial reduction of lignin	-6.0%	-0.1	372%	1.5	Oxidative EEA <sup>d</sup> (μmol cells <sup>-1</sup> hr <sup>-1</sup> )	21
Reduction of microbial biomass	-23%	-1.6	-16%	-1.4	Lipid P (nmol g <sup>-1</sup> soil)	20
Reduction of temperature sensitivity of microbial efficiency for recalcitrant substrates	<i>n.d.</i>	<i>n.d.</i>	-31%	-5.6	<sup>13</sup> C-Phenol Utilization (C <sub>growth</sub> C <sub>metabolized</sub> <sup>-1</sup> °C <sup>-1</sup> )	23
Alteration of fungal:bacterial ratio of C-degrading genes	31%	1.0	-11%	-0.8	Fungal:bacterial CAZy gene ratio	22
Decreased lignin relative abundance	-24%	-1.2	-29%	-0.9	pyGCMS <sup>e</sup> (Lignin % fraction of SOM <sup>g</sup> )	TS <sup>h</sup>
<b>Phase IV (2014-2016)</b>						
Reduction in microbial biomass	-40%	*	-40%	*	DCE <sup>f</sup> (μg N g <sup>-1</sup> soil)	TS <sup>h</sup>
Reduction in microbial biomass	-25%	-0.9	-20%	-0.7	Lipid P (ng g <sup>-1</sup> soil), seasonal median	19
Decreased lignin relative abundance	-17%	-0.8	-53%	-1.3	pyGCMS <sup>e</sup> (Lignin % fraction of SOM <sup>g</sup> )	19

310

311 **Table 1. Changes observed in soil C pools and the microbial community in response to soil**  
312 **warming of 5°C above ambient in phases II to IV of the 26-year experiment.** Percent change is  
313 based on observed means in heated plots relative to controls. Effect size is calculated by  
314 Cohen's D test using pooled standard deviation. Percent changes smaller than 10% and effect  
315 sizes smaller than 2 (equivalent to a shift of two standard deviations) are in italics; n.d., not  
316 determined. DOC, dissolved organic carbon; SIR, substrate-induced respiration; CFE, chloroform  
317 fumigation extraction; EEA, extracellular enzyme activity; CAZy, carbohydrate-active enzymes;  
318 pyGCMS, pyrolysis gas chromatography–mass spectrometry; DCE, direct chloroform extraction;  
319 SOM, soil organic matter. For phases II to IV, “reduction in microbial biomass” refers to a  
320 within-phase decrease in the microbial biomass in the heated soils relative to the control soils  
321 measured during that phase. An asterisk indicates that within-treatment plot-to-plot variability  
322 could not be measured and effect size could not be determined because measurements were  
323 made on soil samples bulked by treatment. No measurements were made of changes in  
324 microbial responses to warming during phase I.